



# Summary of Social Housing Assessments 2016

Key Findings



Housing Agency  
53 Mount Street Upper  
Dublin 2, D02 KT73

ISBN-978-1-903848-37-1

*First published  
December 2016*

# Contents

Executive Summary	3
01 National and Local Figures	5
02 Household Profile Key Findings	9
<b>Appendices</b>	
Appendix 1: Breakdown of Tables by Local Authority	21
Appendix 2: Background and Methodology	40
<b>Tables</b>	
Table 1.1: Number of households qualified for social housing support by local authority, 2013 and 2016	6
Table 1.2: Number of households qualified for social housing support by local authority ordered by the change in the number of households eligible for support, 2013 and 2016	7
Table 1.3: Overview of local authorities that experienced a decrease in the number of households assessed as in need of social housing support from 2013 to 2016	8
Table 1.4: Overview of local authorities that experienced an increase in the number of households assessed as in need of social housing support from 2013 to 2016	9
Table 2.1: Age Profile of Households (Main Applicant) Qualified for Social Housing Support, 2013 and 2016	11
Table 2.2: Employment Status (Main Applicant), 2013 and 2016	12
Table 2.3: Sources of Household Income, 2013 and 2016	13
Table 2.4: Household Composition, 2013 and 2016	14
Table 2.5: Main Need for Social Housing Support, 2013 and 2016	15
Table 2.6: Breakdown of Accommodation Requirements, 2013 and 2016	16
Table 2.7: Breakdown of the Current Tenure of Households Qualified and in Need of Social Housing Support, 2013 and 2016	17
Table 2.8: Length of Time on Record of Qualified Households, 2013 and 2016	18
Table 2.9: Nationality (Main Applicant) Qualified for Social Housing Support, 2013 and 2016	19

Table A1.1: Age Profile of Households (Main Applicant) Qualified for Social Housing Support by Local Authority, 2013 and 2016	22
Table A1.2: Employment Status (Main Applicant) by Local Authority, 2013 and 2016	24
Table A1.3: Source of Household Income (Main Applicant) by Local Authority, 2013 and 2016	26
Table A1.4: Household Composition by Local Authority, 2013 and 2016	28
Table A1.5: Basis of Need by Local Authority, 2013 and 2016	30
Table A1.6: Breakdown of Accommodation Requirements by Local Authority, 2013 and 2016	32
Table A1.7: Breakdown of the Current Tenure of Households Qualified and in Need of Social Housing Support by Local Authority, 2013 and 2016	34
Table A1.8: Length of Time on Record of Qualified Households, 2013 and 2016 by Local Authority, 2013 and 2016	36
Table A1.9: Nationality (Main Applicant), 2013 and 2016 by Local Authority, 2013 and 2016	38

## Figures

Figure 2.1: Age Profile of Households (Main Applicant) Qualified for Social Housing Support, 2013 and 2016	11
Figure 2.2: Employment Status (Main Applicant), 2013 and 2016	12
Figure 2.3: Sources of Household Income, 2013 and 2016	13
Figure 2.4: Household Composition, 2013 and 2016	14
Figure 2.5: Main Need for Social Housing Support, 2013 and 2016	15
Figure 2.6: Breakdown of Accommodation Requirements, 2013 and 2016	16
Figure 2.7: Breakdown of the Current Tenure of Households Qualified and in Need of Social Housing Support, 2013 and 2016	17
Figure 2.8: Length of Time on Record of Qualified Households, 2013 and 2016	18
Figure 2.9: Nationality (Main Applicant) Qualified for Social Housing Support, 2013 and 2016	19
Figure 3: Organisations Involved in the Summary of Social Housing Assessments	42
Figure 4: Summary of Housing Needs Assessment Process Map	45

# Executive summary

This report is the Summary of Social Housing Assessments 2016. It brings together information provided by local authorities on households in their functional area qualified for social housing support whose social housing need is not being met. It also compares these results to previous ones published in 2013.

**Purpose of the Assessment:** to count the total number of households qualified for social housing support across the country on September 21st 2016 in order to inform policy and plan for the right types of housing support.

**'Net Need' or the Total Number of Households Qualified:** is the total number of households qualifying for social housing support whose social housing need is not being met.

**Criteria:** Households must be eligible and in need of social housing support. Households currently living in local authority rented accommodation, voluntary/co-operative accommodation, accommodation provided under the Housing Assistance Payment (HAP) scheme, accommodation provided under the Rental Accommodation Scheme (RAS), accommodation provided under the Social Housing Capital Expenditure Programme (SHCEP) schemes or any household on a transfer list are not included in the total number.

## Net Need Figures

Total Number of Qualified Households 2016

**91,600**

Total Number of Qualified Households 2013

**89,872**

Increase between 2013 and 2016

**1,728 (+1.9%)**



## Summary Figures from the 2016 Assessment

■ A total of 35,572 households that qualified for social housing support were in one of the four Dublin local authorities. This accounted for two-fifths (39%) of all qualified households across the country. Over half (56%) of these were in the Dublin City Council area.

■ **Social welfare remains the main source of income for eligible households; however, the number of households with income from employment increased by 25% compared to the 2013 assessment.**



■ Two-thirds (67%) of households were living in the private rented sector (45% of whom were not in receipt of rent supplement) and one-fifth (21%) were living with parents, other relatives or friends.

■ **The top three reasons for basis of need for social housing support were: dependent on rent supplement (43%), unsuitable accommodation due to particular household circumstances (23%) and involuntary sharing (13%).**



■ Almost 6% of households qualify for social housing support as they were homeless or living in institutional / emergency accommodation and for a further 6% the main need for social housing support was due to a disability.

■ **Three-quarters (74%) of households consisted of one adult: 44% were single person households, and 30% were one adult with a child or children.**



■ The number of households new to the waiting list in 2016 (i.e., those on the list for less than 12 months at the date of assessment) reduced by just over one-third (37%) compared to 2013. Almost half (47%) of households have been qualified for social housing support for more than 4 years. One-fifth (21%) have been qualified for more than 7 years – in 2013 the equivalent figure was 9%.

■ Households headed by someone in their 30s made up one-third (33%) of all qualified households.

■ **The majority of qualified households are Irish citizens (72%), while 20% are EEA citizens and 8% are Non-EU citizens.**



**Date of 2016 Assessment: 21 September 2016**

# 01

## National and Local Figures

91,600 households were assessed as qualified for housing support as of 21 September 2016. The number of households qualified for support increased by 1,728 (or 1.9%) compared to the last assessment carried out in 2013. The results for 2016 are comparable with the previous assessment.

*Table 1.1* sets out a breakdown by housing authority area of the number of households assessed as qualified for social housing support in 2016 and in 2013, and a comparison of the change between these two periods.

Figures for unmet need in the Dublin Housing Authorities show an overall increase in demand for social housing support of 11.8%, however there is variation within Dublin, with demand in Dublin City Council increasing by 22.5%, while in South Dublin County Council there was a decrease of 10.5% (*See Table A1.1*).

Dublin City Council has nearly 20,000 households qualified for social housing support in 2016. Outside of the Dublin authorities, it is Kildare (5,572) followed by Cork City (4,440) that have the highest numbers of households assessed as being in need of social housing support.

A decrease of 31% was recorded in the urban housing authority of Cork City Council, while Cork County Council also reduced by 11.7%. Limerick City and County and Galway City saw increases in the numbers qualified for social housing support. Figures for Galway County were similar for both years.

The figures show a wide variation across the country. Some substantial increases were seen in the housing authorities of Roscommon (+122%), Leitrim (+44.6%) and Laois (+32.8), while over the same period other areas experienced large decreases in numbers, for example in Louth (-32%), Carlow (-31%) and Donegal (-24.4%).

The Housing Agency will carry out further analysis of these variations and trends in order to provide deeper understanding of the data.

## Distribution of Qualified Households in Need of Social Housing by Local Authority, 2013 and 2016

**Table 1.1: Number of households qualified for social housing support by local authority, 2013 and 2016**

Local Authority	2013	2016	Change (number)	Change (%)
Carlow County Council	1,043	719	-324	-31.1
Cavan County Council	741	761	20	2.7
Clare County Council	2,032	1,966	-66	-3.2
Cork City Council	6,440	4,440	-2,000	-31.1
Cork County Council	4,804	4,241	-563	-11.7
Donegal County Council	1,675	1,267	-408	-24.4
Dublin City Council	16,171	19,811	3,640	22.5
Dún Laoghaire-Rathdown	3,406	3,341	-65	-1.9
Fingal County Council	6,020	6,858	838	13.9
Galway City Council	2,471	3,322	851	34.4
Galway County Council	2,099	2,087	-12	-0.6
Kerry County Council	4,112	3,897	-215	-5.2
Kildare County Council	5,454	5,572	118	2.2
Kilkenny County Council	1,670	1,721	51	3.1
Laois County Council	902	1,198	296	32.8
Leitrim County Council	251	363	112	44.6
Limerick County Council	2,810	3,125	315	11.2
Longford County Council	597	644	47	7.9
Louth County Council	3,809	2,600	-1,209	-31.7
Mayo County Council	1,479	1,242	-237	-16.0
Meath County Council	2,502	3,311	809	32.3
Monaghan County Council	696	514	-182	-26.1
Offaly County Council	1,177	1,042	-135	-11.5
Roscommon County Council	252	560	308	122.2
Sligo County Council	770	801	31	4.0
South Dublin County Council	6,217	5,562	-655	-10.5
Tipperary County Council	1,987	1,858	-129	-6.5
Waterford County Council	1,877	1,596	-281	-15.0
Westmeath County Council	1,893	1,926	33	1.7
Wexford County Council	2,087	2,744	657	31.5
Wicklow County Council	2,428	2,511	83	3.4
<b>TOTAL</b>	<b>89,872</b>	<b>91,600</b>	<b>1,728</b>	<b>1.9</b>



**Table 1.2: Number of households qualified for social housing support by local authority ordered by the change in the number of households eligible for support, 2013 and 2016**

Local Authority	2013	2016	Change (number)	Change (%)
Cork City Council	6,440	4,440	-2,000	-31.1
Louth County Council	3,809	2,600	-1,209	-31.7
South Dublin County Council	6,217	5,562	-655	-10.5
Cork County Council	4,804	4,241	-563	-11.7
Donegal County Council	1,675	1,267	-408	-24.4
Carlow County Council	1,043	719	-324	-31.1
Waterford City & County Council	1,877	1,596	-281	-15.0
Mayo County Council	1,479	1,242	-237	-16.0
Kerry County Council	4,112	3,897	-215	-5.2
Monaghan County Council	696	514	-182	-26.1
Offaly County Council	1,177	1,042	-135	-11.5
Tipperary County Council	1,987	1,858	-129	-6.5
Clare County Council	2,032	1,966	-66	-3.2
Dún Laoghaire-Rathdown	3,406	3,341	-65	-1.9
Galway County Council	2,099	2,087	-12	-0.6
Cavan County Council	741	761	20	2.7
Sligo County Council	770	801	31	4.0
Westmeath County Council	1,893	1,926	33	1.7
Longford County Council	597	644	47	7.9
Kilkenny County Council	1,670	1,721	51	3.1
Wicklow County Council	2,428	2,511	83	3.4
Leitrim County Council	251	363	112	44.6
Kildare County Council	5,454	5,572	118	2.2
Laois County Council	902	1,198	296	32.8
Roscommon County Council	252	560	308	122.2
Limerick City & County Council	2,810	3,125	315	11.2
Wexford County Council	2,087	2,744	657	31.5
Meath County Council	2,502	3,311	809	32.3
Fingal County Council	6,020	6,858	838	13.9
Galway City Council	2,471	3,322	851	34.4
Dublin City Council	16,171	19,811	3,640	22.5
<b>TOTAL</b>	<b>89,872</b>	<b>91,600</b>	<b>1,728</b>	<b>1.9</b>

**Table 1.3: Overview of local authorities that experienced a decrease in the number of households assessed as in need of social housing support from 2013 to 2016**

Local Authority	2013	2016	Change (number)	Change (%)
Cork City Council	6,440	4,440	-2,000	-31.1
Louth County Council	3,809	2,600	-1,209	-31.7
South Dublin County Council	6,217	5,562	-655	-10.5
Cork County Council*	4,804	4,241	-563	-11.7
Donegal County Council	1,675	1,267	-408	-24.4
Carlow County Council	1,043	719	-324	-31.1
Waterford City & County Council	1,877	1,596	-281	-15.0
Mayo County Council	1,479	1,242	-237	-16.0
Kerry County Council	4,112	3,897	-215	-5.2
Monaghan County Council	696	514	-182	-26.1
Offaly County Council	1,177	1,042	-135	-11.5
Tipperary County Council	1,987	1,858	-129	-6.5
Clare County Council	2,032	1,966	-66	-3.2
Dún Laoghaire-Rathdown	3,406	3,341	-65	-1.9
Galway County Council	2,099	2,087	-12	-0.6

**Table 1.4: Overview of local authorities that experienced an increase in the number of households assessed as in need of social housing support from 2013 to 2016**

Local Authority	2013	2016	Change (number)	Change (%)
Dublin City Council	16,171	19,811	3,640	22.5
Galway City Council	2,471	3,322	851	34.4
Fingal County Council	6,020	6,858	838	13.9
Meath County Council	2,502	3,311	809	32.3
Wexford County Council	2,087	2,744	657	31.5
Limerick City & County Council	2,810	3,125	315	11.2
Roscommon County Council	252	560	308	122.2
Laois County Council	902	1,198	296	32.8
Kildare County Council	5,454	5,572	118	2.2
Leitrim County Council	251	363	112	44.6
Wicklow County Council	2,428	2,511	83	3.4
Kilkenny County Council	1,670	1,721	51	3.1
Longford County Council	597	644	47	7.9
Westmeath County Council	1,893	1,926	33	1.7
Sligo County Council	770	801	31	4.0
Cavan County Council	741	761	20	2.7

# 02

## Household Profile Key Findings

The age profile of the main applicant shows a similar distribution in 2013 and 2016 (*Table 2.1*). There was a noticeable drop, however, in the proportion of households headed by someone aged under 25 qualified for social housing support. In 2013, 13% (11,986) of households were headed by someone in this age range, while in 2016 it was 8% (7,370). An increase in the number of older main applicants is also evident.

Social welfare payments are the only income source for just over two-thirds (67%) of primary applicants on the list (*Table 2.3*). However, the number of primary applicants whose only source of income was welfare payments fell by 3,632 (5.6%) compared to the 2013 assessment (*see Table 2.3*). Income from employment was the only source of income for 12,148 applicants (13.3% of all primary applicants) meeting the criteria for social housing support. In 2013, 10,058 primary applicants (11.2% of all main applicants on the list at that time) had income from employment only. The assessment conducted earlier this year identified a further 7,032 applicants (7.7% of all main applicants) who had income from both employment and social welfare payments. This represents an increase of 33.4% in the proportion of people qualified for support that are in some form of employment - in 2013, 5,270, or 5.9% of overall number of primary applicants, had income from employment and social welfare.

As of 21 September 2016, there were 40,342 single-person households assessed as in need of social housing support, making it the most regularly occurring household composition (44%) of all households on the list – *see Table 2.4*. The composition of households qualified for social housing support in 2016 is very similar to the make-up of households identified as being in need of assistance in the 2013 assessment (*see Figure 2.4*).

Being in receipt of rent supplement is the most commonly cited basis of need for social housing support, with 39,296 (42.9%) of all households coming under this category of need. The relative importance of rent supplement as a basis of need for social housing support reduced significantly compared to the 2013 assessment when 46,584 (51.8%) of households were recorded in this category of need. This may partly be explained by the introduction of the Housing Assistance Payment, which at the time of the

assessment was accommodating 13,143 households across 20 local authorities.

Similar to the results of the assessment conducted in 2013, the second most commonly occurring basis for need was the 'unsuitable accommodation due to particular household circumstances' category. There are 21,100 primary applicants in this category of need representing 23% of the total net household need (*Table 2.5*). It is likely that this category is populated by households not in receipt of rent supplement, but with a difficulty in affording private accommodation. The Housing Agency will provide a more comprehensive breakdown of households in this category of need in a forthcoming report.

The majority of those qualified for social housing support (85%) had a requirement for standard accommodation. Homelessness and chronic medical issues are the two most regularly identified circumstances leading to a specific accommodation need; of those households identified as having a specific housing requirement, 5,159 were households where at least one member was considered homeless (5.6%) and 4,456 were households (4.9%) containing an individual that has an enduring medical issue (*Table 2.6*). While the proportion of households containing a person with a persistent medical issue is broadly similar to the share identified in the 2013 assessment, the proportion of households containing a person deemed to be homeless has doubled over the same period (*Figure 2.6*).

Approximately two-thirds (61,723) of households qualified for social housing support were living in the private rented sector (*Table 2.7*). In 2013, 74.4% of households were renting in the private sector.

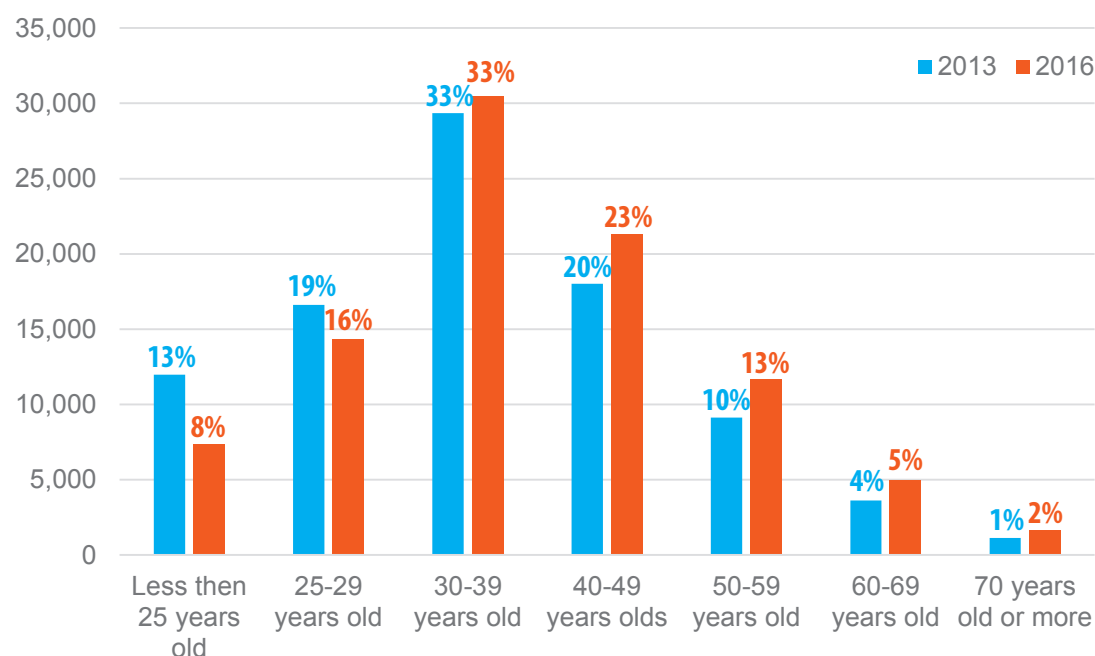
The reduction in the share of households in this form of tenure is consistent with the reduction in rent supplement being identified as the basis of need for social housing support (*Table 2.7*). The private rented sector continues to play a significant role in accommodating households assessed as in need of social housing and others in need of assistance through the Rental Accommodation Scheme and the Housing Assistance Payment. As of September this year, there were 19,315 primary applicants living with their parents, relatives or friends, just over one-in-five of all those qualified for support (21.1%). This represents an increase of one-fifth (19%) since 2013.

There has been a decline in the number of households qualifying for social housing in the last 12 months, but an increase in the number more than 7 years qualified. 13,380 households (or 14.6% of the total net need) qualified for social housing support in the twelve months immediately prior to the 2016 assessment date (*Table 2.8*). The proportion of households on a waiting list for social housing less than a year fell by over one-third, compared to 2013, while the proportion of households waiting more than 7 years increased from 9% of 21% over the same period. There are now 5,096 households (5.6%) that have been on the waiting list for more than 10 years. Results from the assessment carried out this year show the median time on the list is three years and nine months. The median time on the list in 2013 was two years and eight months.

The majority (71.9%) of those qualified for social housing support are Irish citizens; 28.1% are non-Irish nationals with the majority of this cohort coming from other EU/ EAA countries (*Table 2.9*).

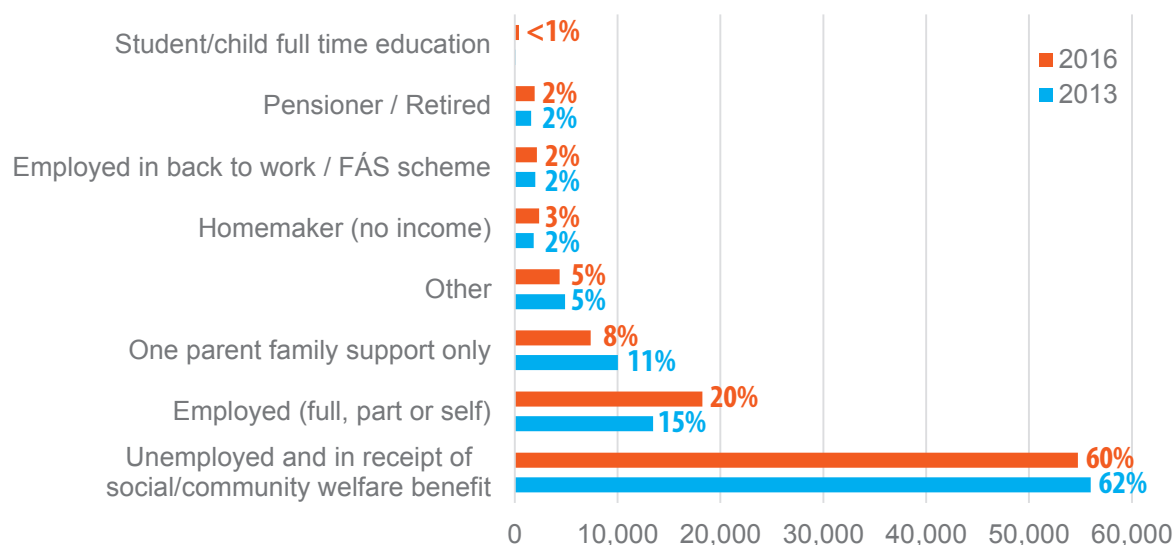
## Profile of Qualified Households in Need of Social Housing, 2013 and 2016

**Figure 2.1: Age Profile of Households (Main Applicant) Qualified for Social Housing Support, 2013 and 2016**



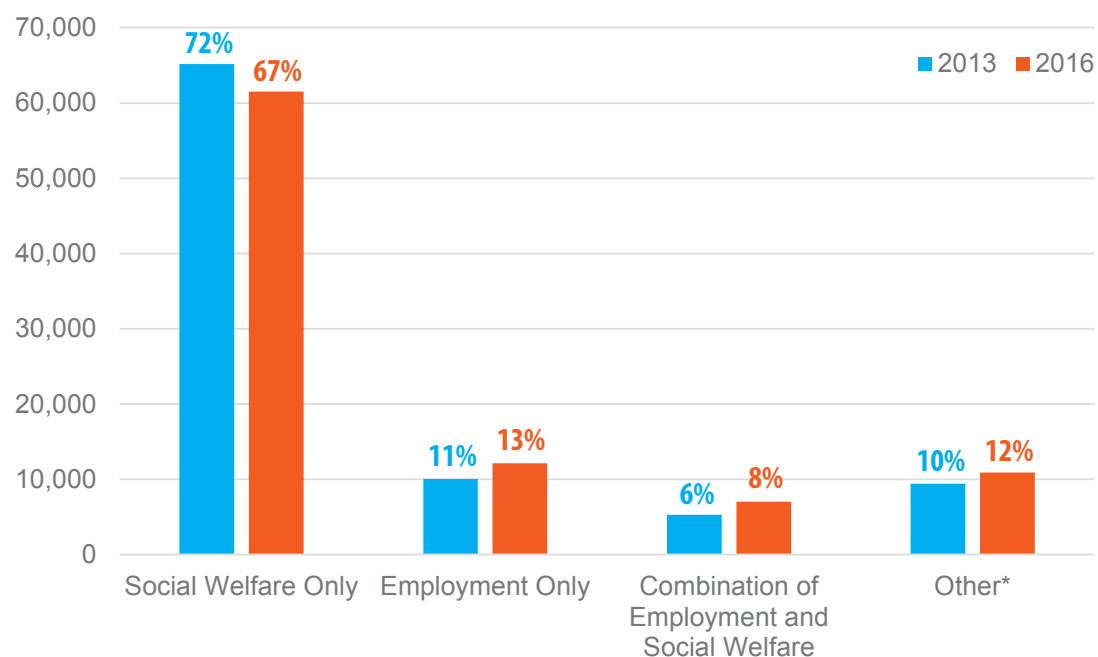
**Table 2.1: Age Profile of Households (Main Applicant) Qualified for Social Housing Support, 2013 and 2016**

Age Profile	2013	2016	Change	Change (%)
Less than 25 years old	11,986	7,370	-4,616	-38.5
25-29 years old	16,624	14,286	-2,338	-14.1
30-39 years old	29,353	30,449	1,096	3.7
40-49 years olds	18,009	21,270	3,261	18.1
50-59 years old	9,135	11,631	2,496	27.3
60-69 years old	3,621	4,991	1,370	37.8
70 years old or more	1,144	1,603	459	40.1
<b>TOTAL</b>	<b>89,872</b>	<b>91,600</b>	<b>1,728</b>	<b>1.9</b>

**Figure 2.2: Employment Status (Main Applicant), 2013 and 2016****Table 2.2: Employment Status (Main Applicant), 2013 and 2016**

Employment Status	2013	2016	Change	Change (%)
Unemployed and in receipt of social/community welfare benefit	55,987	54,741	-1,246	-2.2
Employed (full, part or self)	13,451	18,247	4,796	35.7
One parent family support only	10,037	7,377	-2,660	-26.5
Other	4,886	4,375	-511	-10.5
Homemaker (no income)	1,840	2,368	528	28.7
Employed in back to work / FAS scheme	1,995	2,146	151	7.6
Pensioner / retired	1,608	1,932	324	20.1
Student/child full time education	68	414	346	508.8
<b>TOTAL</b>	<b>89,872</b>	<b>91,600</b>	<b>1,728</b>	<b>1.9</b>

**Figure 2.3: Sources of Household Income, 2013 and 2016**

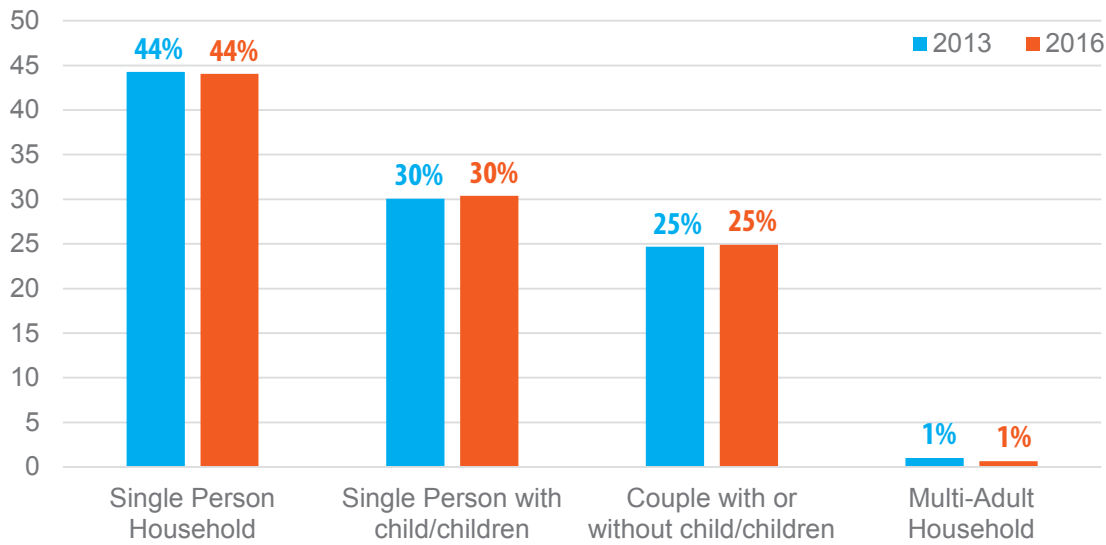


**Table 2.3: Sources of Household Income, 2013 and 2016**

Source of Household Income	2013	2016	Change	Change (%)
Social welfare only	65,151	61,519	-3,632	-5.6
Employment only	10,058	12,148	2,090	20.8
Combination of employment and social welfare	5,270	7,032	1,762	33.4
Other*	9,393	10,901	1,508	16.1
<b>TOTAL</b>	<b>89,872</b>	<b>91,600</b>	<b>1,728</b>	<b>1.9</b>

\*Other includes homemaker, pension only, no income, maintenance only and other combinations

**Figure 2.4: Household Composition, 2013 and 2016**

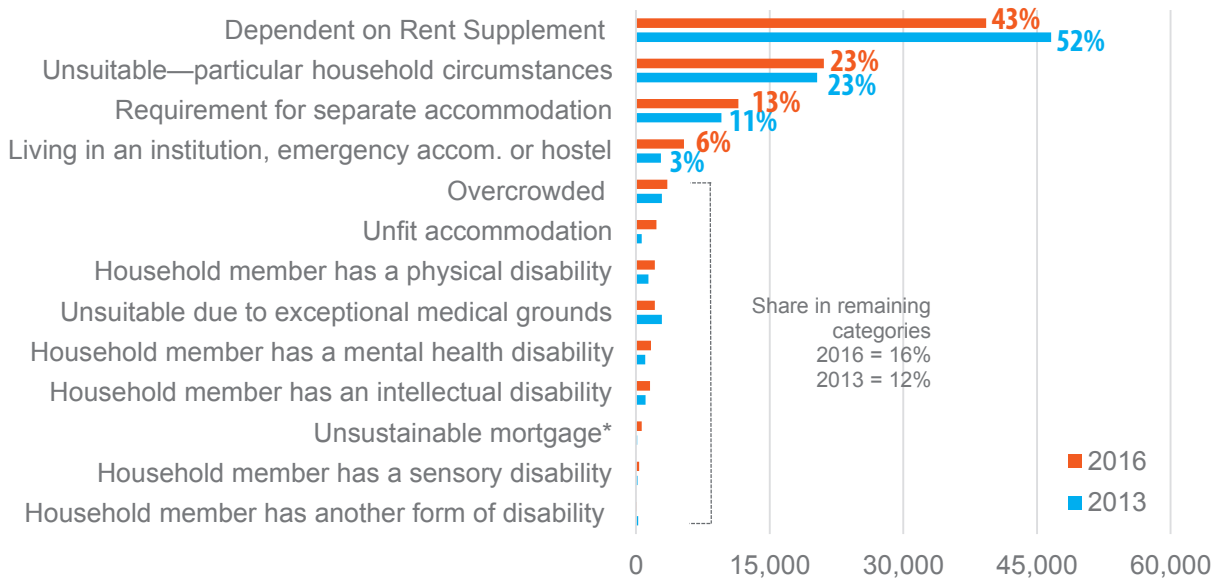


**Table 2.4: Household Composition, 2013 and 2016**

Household Type	2013	2016	Change	Change (%)
Single person household	39,803	40,342	539	1.4
Single person with child/children	27,005	27,851	846	3.1
Couple with or without child/children	22,174	22,806	632	2.9
Multi-Adult Household	890	601	-289	-32.5
<b>TOTAL</b>	<b>89,872</b>	<b>91,600</b>	<b>1,728</b>	<b>1.9</b>



**Figure 2.5: Main Need for Social Housing Support, 2013 and 2016**

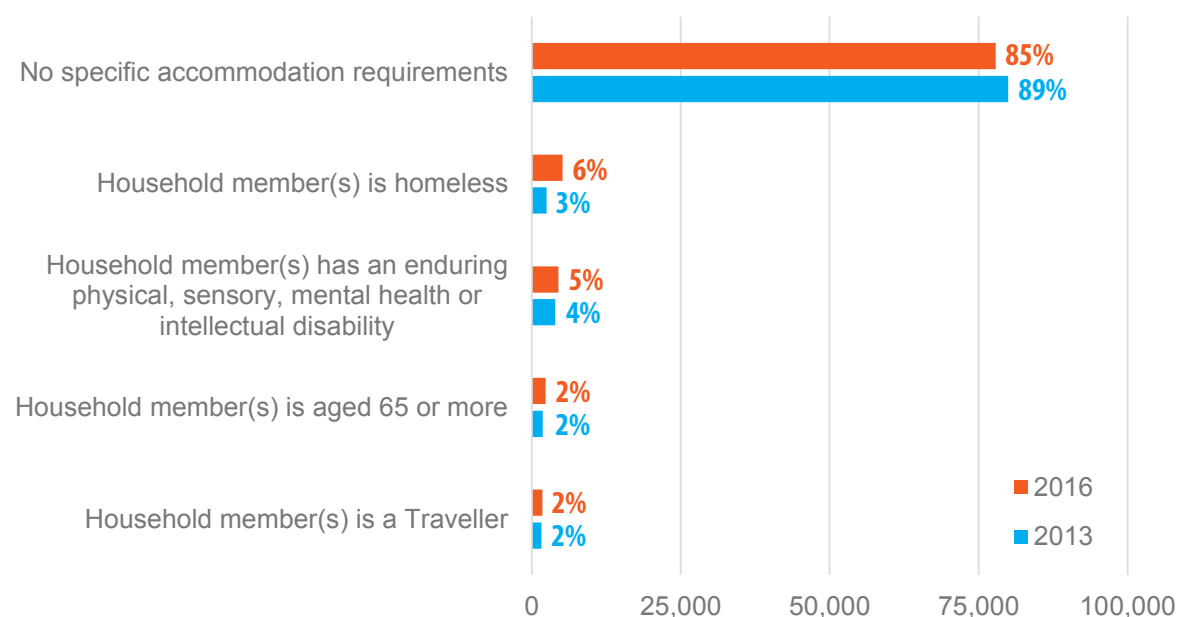


**Table 2.5: Main Need for Social Housing Support, 2013 and 2016**

Main Need for Social Housing Support	2013	2016	Change	Change (%)
Dependent on Rent Supplement	46,584	39,296	-7,288	-15.6
Unsuitable accommodation due to particular household circumstances	20,349	21,100	751	3.7
Reasonable requirement for separate accommodation	9,587	11,476	1,889	19.7
Homeless, living in an institution, emergency accommodation or hostel	2,808	5,401	2,593	92.3
Overcrowded accommodation	2,896	3,517	621	21.4
Unfit accommodation	647	2,304	1,657	256.1
Household member has a physical disability	1,392	2,098	706	50.7
Unsuitable accommodation due to exceptional medical or compassionate grounds	2,909	2,096	-813	-27.9
Household member has a mental health disability	1,034	1,687	653	63.2
Household member has an intellectual disability	1,078	1,561	483	44.8
Unsustainable mortgage*	154	657	503	326.6
Household member has a sensory disability	190	347	157	82.6
Household member has another form of disability	244	60	-184	-75.4
<b>TOTAL</b>	<b>89,872</b>	<b>91,600</b>	<b>1,728</b>	<b>1.9</b>

\*Where mortgage deemed unsustainable under the Mortgage Arrears Resolution Process (MARP)

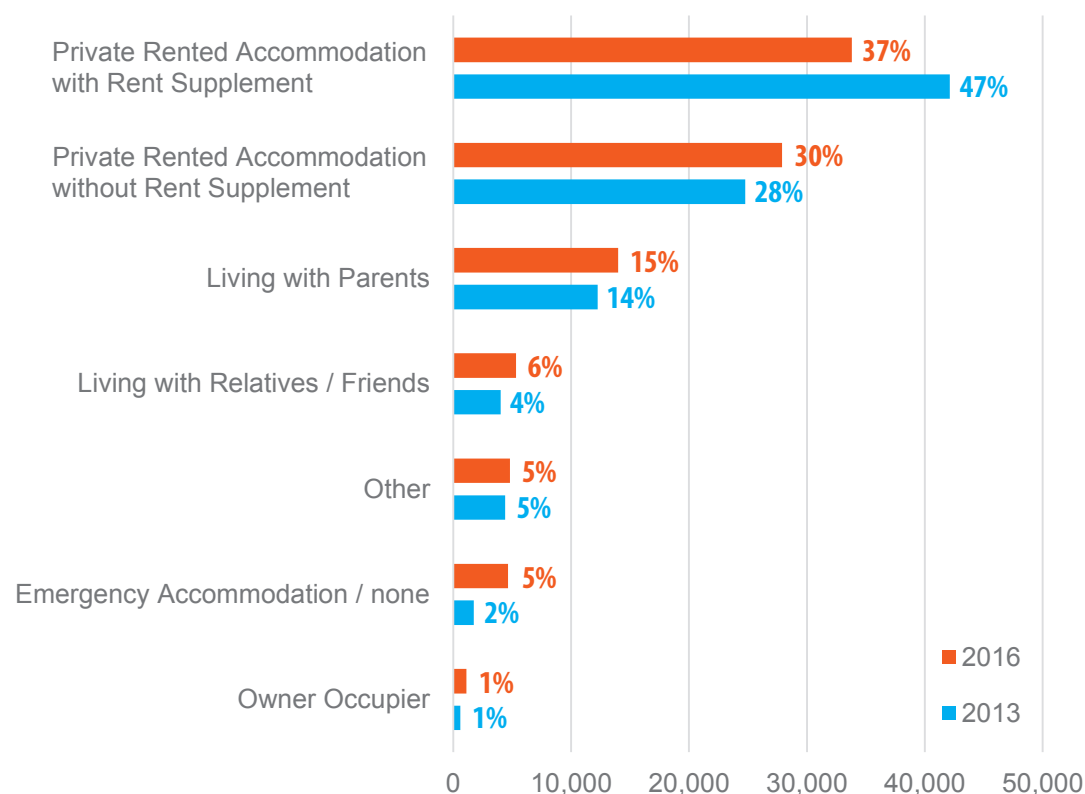
**Figure 2.6: Breakdown of Accommodation Requirements, 2013 and 2016**



**Table 2.6: Breakdown of Accommodation Requirements, 2013 and 2016**

Breakdown of Accommodation Requirements	2013	2016	Change (number)	Change (%)
No specific accommodation requirements	79,978	77,880	-2,098	-2.6
Household member(s) has an enduring physical, sensory, mental health or intellectual disability	3,919	4,456	537	13.7
Household member(s) is homeless	2,499	5,159	2,660	106.4
Household member(s) is a Traveller	1,632	1,778	146	8.9
Household member(s) is aged 65 or more	1,844	2,327	483	26.2
<b>TOTAL</b>	<b>89,872</b>	<b>91,600</b>	<b>1,728</b>	<b>1.9</b>

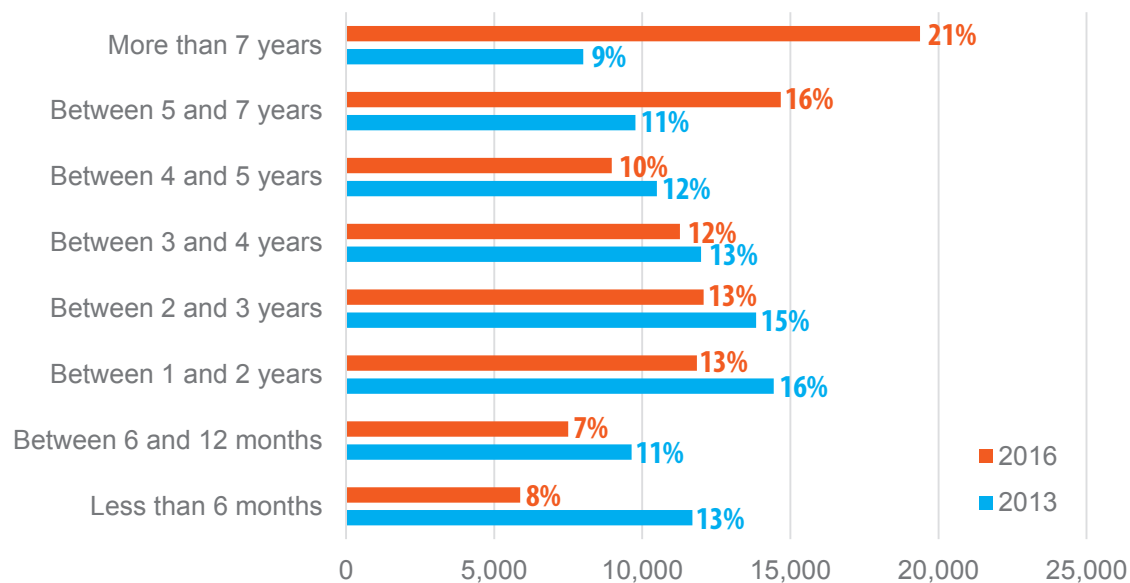
**Figure 2.7: Breakdown of the Current Tenure of Households Qualified and in Need of Social Housing Support, 2013 and 2016**



**Table 2.7: Breakdown of the Current Tenure of Households Qualified and in Need of Social Housing Support, 2013 and 2016**

Main Need for Social Housing Support	2013	2016	Change (number)	Change (%)
Private Rented Accommodation with Rent Supplement	42,109	33,819	-8,290	-19.7
Private Rented Accommodation without Rent Supplement	24,774	27,904	3,130	12.6
Living with Parents	12,237	13,989	1,752	14.3
Living with Relatives / Friends	4,022	5,326	1,304	32.4
Emergency Accommodation / none	1,727	4,643	2,916	168.8
Owner Occupier	595	1,106	511	85.9
Other	4,408	4,813	405	9.2
<b>TOTAL</b>	<b>89,872</b>	<b>91,600</b>	<b>1,728</b>	<b>1.9</b>

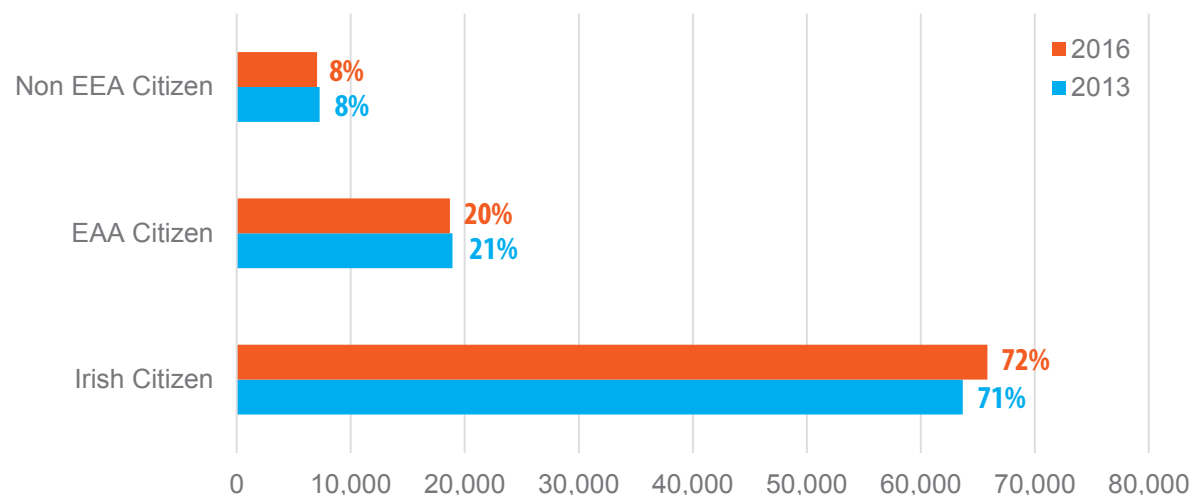
**Figure 2.8: Length of Time on Record of Qualified Households, 2013 and 2016**



**Table 2.8: Length of Time on Record of Qualified Households, 2013 and 2016**

Length of Time	2013	2016	Change (number)	Change (%)
Less than 6 months	11,696	7,042	-4,654	-39.8
Between 6 and 12 months	9,645	6,338	-3,307	-34.3
Between 1 and 2 years	14,436	11,843	-2,593	-18.0
Between 2 and 3 years	13,841	12,075	-1,766	-12.8
Between 3 and 4 years	11,986	11,268	-718	-6.0
Between 4 and 5 years	10,499	8,972	-1,527	-14.5
Between 5 and 7 years	9,765	14,679	4,914	50.3
More than 7 years	8,004	19,383	11,379	142.2
<b>TOTAL</b>	<b>89,872</b>	<b>91,600</b>	<b>1,728</b>	<b>1.9</b>

**Figure 2.9: Nationality (Main Applicant) Qualified for Social Housing Support, 2013 and 2016**



**Table 2.9: Nationality (Main Applicant) Qualified for Social Housing Support, 2013 and 2016**

Nationality	2013	2016	Change (number)	Change (%)
Irish citizen	63,674	65,835	2,161	3.4
EAA citizen	18,918	18,710	-208	-1.1
Non EEA citizen	7,280	7,055	-225	-3.1
Of which:				
<i>Refugee</i>	710	683	-27	-3.8
<i>Permission to remain in the State</i>	6,539	6,260	-279	-4.3
<i>Subsidiary protection status</i>	31	112	81	261.3
<b>TOTAL</b>	<b>89,872</b>	<b>91,600</b>	<b>1,728</b>	<b>1.9</b>



# Appendix 1

## Breakdown of Tables by Local Authority



**Table A1.1: Age Profile of Households (Main Applicant) Qualified for Social Housing Support by Local Authority, 2013 and 2016**

	Less than 25 years	25-29 years	30-39 years	40-49 years	50-59 years	60-69 years	70 years old or more	TOTAL
<b>Carlow</b>								
2013	197	194	330	178	90	44	10	1,043
2016	90	136	225	135	99	29	5	719
<b>Cavan</b>								
2013	105	126	257	138	81	27	7	741
2016	97	114	224	168	95	47	16	761
<b>Clare</b>								
2013	277	287	571	474	245	136	42	2,032
2016	179	258	521	489	287	172	60	1,966
<b>Cork City</b>								
2013	795	1,341	2,265	1,241	590	161	47	6,440
2016	352	763	1,548	1,045	519	166	47	4,440
<b>Cork County</b>								
2013	513	821	1,569	978	601	234	88	4,804
2016	223	541	1,405	979	681	305	107	4,241
<b>Donegal</b>								
2013	232	289	500	353	184	84	33	1,675
2016	141	181	401	255	177	80	32	1,267
<b>Dublin City</b>								
2013	2,305	3,089	5,028	3,280	1,657	640	172	16,171
2016	1,668	3,275	6,465	4,581	2,479	1,047	296	19,811
<b>Dún Laoghaire-Rathdown</b>								
2013	376	576	1,118	797	368	117	54	3,406
2016	275	491	1,058	814	463	170	70	3,341
<b>Fingal</b>								
2013	698	1,098	2,213	1,342	469	160	40	6,020
2016	375	1,042	2,490	1,855	731	288	77	6,858
<b>Galway City</b>								
2013	296	443	903	531	223	67	8	2,471
2016	234	524	1,215	822	367	144	16	3,322
<b>Galway County</b>								
2013	240	313	673	435	286	122	30	2,099
2016	148	267	615	507	324	169	57	2,087
<b>Kerry</b>								
2013	460	743	1,391	858	420	182	58	4,112
2016	293	536	1,320	877	549	232	90	3,897
<b>Kildare</b>								
2013	598	1,034	1,953	1,053	495	232	89	5,454
2016	290	795	2,019	1,372	660	306	130	5,572
<b>Kilkenny</b>								
2013	229	319	541	290	183	84	24	1,670
2016	128	255	564	392	256	80	46	1,721
<b>Laois</b>								
2013	132	157	305	194	87	23	4	902
2016	97	176	428	285	158	45	9	1,198
<b>Leitrim</b>								
2013	37	35	67	54	35	18	5	251
2016	32	45	107	90	54	27	8	363



	Less than 25 years	25-29 years	30-39 years	40-49 years	50-59 years	60-69 years	70 years old or more	TOTAL
<b>Limerick City &amp; County</b>								
2013	422	506	905	518	283	124	52	2,810
2016	351	512	1,016	701	326	156	63	3,125
<b>Longford</b>								
2013	75	102	182	119	79	27	13	597
2016	67	80	199	153	97	40	8	644
<b>Louth</b>								
2013	511	723	1,219	785	379	150	42	3,809
2016	197	420	887	569	324	169	34	2,600
<b>Mayo</b>								
2013	147	254	445	308	190	90	45	1,479
2016	79	169	340	332	194	87	41	1,242
<b>Meath</b>								
2013	266	428	850	535	281	105	37	2,502
2016	238	507	1,138	800	393	182	53	3,311
<b>Monaghan</b>								
2013	94	106	212	150	92	33	9	696
2016	39	63	167	132	77	24	12	514
<b>Offaly</b>								
2013	193	213	333	213	156	56	13	1,177
2016	99	166	298	227	159	71	22	1,042
<b>Roscommon</b>								
2013	35	37	74	51	29	18	8	252
2016	38	89	153	145	78	38	19	560
<b>Sligo</b>								
2013	131	118	194	145	91	64	27	770
2016	70	105	237	169	128	62	30	801
<b>South Dublin</b>								
2013	1,061	1,398	2,169	1,049	408	110	22	6,217
2016	517	1,096	2,105	1,102	501	201	40	5,562
<b>Tipperary</b>								
2013	336	368	582	367	223	88	23	1,987
2016	230	331	546	371	237	110	33	1,858
<b>Waterford City &amp; County</b>								
2013	242	324	654	355	191	84	27	1,877
2016	158	240	541	354	197	79	27	1,596
<b>Westmeath</b>								
2013	271	303	528	388	255	112	36	1,893
2016	168	249	560	465	309	131	44	1,926
<b>Wexford</b>								
2013	372	420	588	368	198	97	44	2,087
2016	313	450	809	547	381	176	68	2,744
<b>Wicklow</b>								
2013	340	459	734	462	266	132	35	2,428
2016	184	410	848	537	331	158	43	2,511
<b>TOTAL 2013</b>	<b>11,986</b>	<b>16,624</b>	<b>29,353</b>	<b>18,009</b>	<b>9,135</b>	<b>3,621</b>	<b>1,144</b>	<b>89,872</b>
<b>TOTAL 2016</b>	<b>7,370</b>	<b>14,286</b>	<b>30,449</b>	<b>21,270</b>	<b>11,631</b>	<b>4,991</b>	<b>1,603</b>	<b>91,600</b>

**Table A1.2: Employment Status (Main Applicant) by Local Authority, 2013 and 2016**

	Unemployed, in receipt of social welfare	Employed	Back-to- work / FÁS scheme	Homemaker (no income)	One parent family supports	Other	Retired	TOTAL
<b>Carlow</b>								
2013	652	100	20	143	100	18	10	1,043
2016	447	99	20	83	45	22	3	719
<b>Cavan</b>								
2013	544	107	8	23	20	27	12	741
2016	540	109	24	23	24	28	13	761
<b>Clare</b>								
2013	1,450	257	40	50	88	81	66	2,032
2016	1,307	291	38	51	64	132	83	1,966
<b>Cork City</b>								
2013	4,154	1,091	160	121	449	400	65	6,440
2016	1,970	1,251	87	118	369	591	54	4,440
<b>Cork County</b>								
2013	3,031	792	94	92	361	338	96	4,804
2016	2,473	1,015	111	119	180	228	115	4,241
<b>Donegal</b>								
2013	1,146	189	33	55	128	73	51	1,675
2016	839	188	35	40	70	57	38	1,267
<b>Dublin City</b>								
2013	10,005	2,553	353		2,783	159	318	16,171
2016	11,659	4,405	391	351	2,413	151	441	19,811
<b>Dún Laoghaire-Rathdown</b>								
2013	1,271	642	35	16	409	983	50	3,406
2016	1,324	1,069				948		3,341
<b>Fingal</b>								
2013	2,790	852	219	2	1,370	707	80	6,020
2016	4,417	1,034	220	5	967	49	166	6,858
<b>Galway City</b>								
2013	1,374	461	79	124	201	209	23	2,471
2016	1,794	670	87	181	180	373	37	3,322
<b>Galway County</b>								
2013	1,480	209	31	57	178	94	50	2,099
2016	1,425	270	76	64	120	63	69	2,087
<b>Kerry</b>								
2013	2,915	665	93	50	151	185	53	4,112
2016	2,722	692	112	48	144	105	74	3,897
<b>Kildare</b>								
2013	3,729	774	103	113	486	163	86	5,454
2016	3,402	1,075	143	149	501	163	139	5,572
<b>Kilkenny</b>								
2013	1,112	209	31	43	109	140	26	1,670
2016	1,013	342	33	48	66	194	25	1,721
<b>Laois</b>								
2013	695	97	11	37	27	30	5	902
2016	861	170	20	41	38	60	8	1,198
<b>Leitrim</b>								
2013	200	20	7	4	1	14	5	251
2016	283	32	15	12	1	12	8	363

	Unemployed, in receipt of social welfare	Employed	Back-to- work / FÁS scheme	Homemaker (no income)	One parent family supports	Other	Retired	TOTAL
<b>Limerick City &amp; County</b>								
2013	1,882	300	70	68	298	139	53	2,810
2016	2,073	397	107	58	243	189	58	3,125
<b>Longford</b>								
2013	454	51	12	33	15	17	15	597
2016	444	91	24	45	11	19	10	644
<b>Louth</b>								
2013	2,334	569	72	246	360	171	57	3,809
2016	1,407	542	64	180	164	188	55	2,600
<b>Mayo</b>								
2013	927	193	43	23	110	116	67	1,479
2016	731	177	37	36	81	126	54	1,242
<b>Meath</b>								
2013	1,577	449	61	52	219	89	55	2,502
2016	1,996	767	68	120	154	120	86	3,311
<b>Monaghan</b>								
2013	466	115	22	19	32	26	16	696
2016	314	121	11	13	23	22	10	514
<b>Offaly</b>								
2013	853	124	29	20	61	75	15	1,177
2016	735	122	25	23	35	84	18	1,042
<b>Roscommon</b>								
2013	140	26	3	11	28	31	13	252
2016	338	72	10	16	49	51	24	560
<b>Sligo</b>								
2013	485	85	25	48	15	86	26	770
2016	522	85	21	41	20	87	25	801
<b>South Dublin</b>								
2013	3,698	1,104	115	72	1,166	30	32	6,217
2016	3,175	1,253	93	127	797	73	44	5,562
<b>Tipperary</b>								
2013	1,422	221	39	43	120	102	40	1,987
2016	1,389	265	45	41	44	49	25	1,858
<b>Waterford City &amp; County</b>								
2013	1,164	345	53	25	168	85	37	1,877
2016	907	399	44	25	94	99	28	1,596
<b>Westmeath</b>								
2013	1,190	222	32	53	175	156	65	1,893
2016	1,219	301	57	43	96	146	64	1,926
<b>Wexford</b>								
2013	1,257	218	49	161	237	104	61	2,087
2016	1,542	351	77	192	259	232	91	2,744
<b>Wicklow</b>								
2013	1,590	411	53	36	172	106	60	2,428
2016	1,473	592	51	75	125	128	67	2,511
<b>TOTAL 2013</b>	<b>55,987</b>	<b>13,451</b>	<b>1,995</b>	<b>1,840</b>	<b>10,037</b>	<b>4,954</b>	<b>1,608</b>	<b>89,872</b>
<b>TOTAL 2016</b>	<b>54,741</b>	<b>18,247</b>	<b>2,146</b>	<b>2,368</b>	<b>7,377</b>	<b>4,789</b>	<b>1,932</b>	<b>91,600</b>

**Table A1.3: Source of Household Income (Main Applicant) by Local Authority, 2013 and 2016**

	Social Welfare Only	Employment Only	Employment & Social Welfare	Other*	TOTAL
<b>Carlow</b>					
2013	726	62	50	205	1,043
2016	462	55	47	155	719
<b>Cavan</b>					
2013	572	68	46	55	741
2016	563	59	58	81	761
<b>Clare</b>					
2013	1,576	158	153	145	2,032
2016	1,460	208	138	160	1,966
<b>Cork City</b>					
2013	4,853	791	470	326	6,440
2016	2,745	809	475	411	4,440
<b>Cork County</b>					
2013	3,407	474	396	527	4,804
2016	2,612	583	457	589	4,241
<b>Donegal</b>					
2013	1,258	124	139	154	1,675
2016	908	82	149	128	1,267
<b>Dublin City</b>					
2013	12,414	1,981	629	1,147	16,171
2016	13,056	2,456	1,574	2,725	19,811
<b>Dún Laoghaire-Rathdown</b>					
2013	1,301	412	107	1,586	3,406
2016	1,214	930	143	1,054	3,341
<b>Fingal</b>					
2013	4,150	1,066	–	804	6,020
2016	5,381	1,253	–	224	6,858
<b>Galway City</b>					
2013	1,722	283	218	248	2,471
2016	2,190	388	326	418	3,322
<b>Galway County</b>					
2013	1,657	106	145	191	2,099
2016	1,489	162	183	253	2,087
<b>Kerry</b>					
2013	3,030	435	384	263	4,112
2016	2,832	427	351	287	3,897
<b>Kildare</b>					
2013	4,152	618	320	364	5,454
2016	3,898	828	376	470	5,572
<b>Kilkenny</b>					
2013	1,271	154	126	119	1,670
2016	1,137	274	168	142	1,721
<b>Laois</b>					
2013	640	52	54	156	902
2016	847	93	83	175	1,198
<b>Leitrim</b>					
2013	202	10	17	22	251
2016	284	20	29	30	363

\* Other includes homemaker, pension only, no income, maintenance only and other combinations.

	Social Welfare Only	Employment Only	Employment & Social Welfare	Other*	TOTAL
<b>Limerick City &amp; County</b>					
2013	2,252	211	159	188	2,810
2016	2,407	290	198	230	3,125
<b>Longford</b>					
2013	465	46	27	59	597
2016	456	69	45	74	644
<b>Louth</b>					
2013	2,674	339	271	525	3,809
2016	1,642	322	251	385	2,600
<b>Mayo</b>					
2013	1,115	96	136	132	1,479
2016	926	68	129	119	1,242
<b>Meath</b>					
2013	1,915	262	153	172	2,502
2016	2,164	482	273	392	3,311
<b>Monaghan</b>					
2013	483	85	54	74	696
2016	329	90	43	52	514
<b>Offaly</b>					
2013	959	92	71	55	1,177
2016	787	80	76	99	1,042
<b>Roscommon</b>					
2013	192	7	23	30	252
2016	431	29	58	42	560
<b>Sligo</b>					
2013	561	42	46	121	770
2016	627	45	48	81	801
<b>South Dublin</b>					
2013	3,957	1,147	340	773	6,217
2016	3,348	919	412	883	5,562
<b>Tipperary</b>					
2013	1,574	119	152	142	1,987
2016	1,346	170	148	194	1,858
<b>Waterford City &amp; County</b>					
2013	1,334	251	152	140	1,877
2016	1,012	239	170	175	1,596
<b>Westmeath</b>					
2013	1,525	173	120	75	1,893
2016	1,460	189	162	115	1,926
<b>Wexford</b>					
2013	1,451	125	145	366	2,087
2016	1,922	190	196	436	2,744
<b>Wicklow</b>					
2013	1,763	269	167	229	2,428
2016	1,584	339	266	322	2,511
<b>TOTAL 2013</b>	<b>65,151</b>	<b>10,058</b>	<b>5,270</b>	<b>9,393</b>	<b>89,872</b>
<b>TOTAL 2016</b>	<b>61,519</b>	<b>12,148</b>	<b>7,032</b>	<b>10,901</b>	<b>91,600</b>

\* Other includes homemaker, pension only, no income, maintenance only and other combinations.

**Table A1.4: Household Composition by Local Authority, 2013 and 2016**

	Single Person Household	Single Person with child/ children	Couple with or without child/children	Multi-Adult Household	TOTAL
<b>Carlow</b>					
2013	376	351	312	4	1,043
2016	267	253	195	4	719
<b>Cavan</b>					
2013	248	159	323	11	741
2016	307	197	250	7	761
<b>Clare</b>					
2013	925	540	513	54	2,032
2016	948	543	449	26	1,966
<b>Cork City</b>					
2013	3,542	1,478	1,337	83	6,440
2016	2,027	1,211	1,169	33	4,440
<b>Cork County</b>					
2013	2,094	1,327	1,328	55	4,804
2016	1,868	1,258	1,085	30	4,241
<b>Donegal</b>					
2013	734	563	371	7	1,675
2016	645	369	245	8	1,267
<b>Dublin City</b>					
2013	8,886	4,897	2,377	11	16,171
2016	10,352	5,861	3,590	8	19,811
<b>Dún Laoghaire-Rathdown</b>					
2013	1,707	995	687	17	3,406
2016	1,620	1,033	679	9	3,341
<b>Fingal</b>					
2013	1,204	2,550	2,223	43	6,020
2016	1,605	2,666	2,554	33	6,858
<b>Galway City</b>					
2013	1,114	662	674	21	2,471
2016	1,784	750	771	17	3,322
<b>Galway County</b>					
2013	831	615	644	9	2,099
2016	891	592	597	7	2,087
<b>Kerry</b>					
2013	2,159	1,002	904	47	4,112
2016	1,994	984	885	34	3,897
<b>Kildare</b>					
2013	2,265	1,596	1,556	37	5,454
2016	2,270	1,585	1,693	24	5,572
<b>Kilkenny</b>					
2013	784	464	409	13	1,670
2016	770	470	465	16	1,721
<b>Laois</b>					
2013	355	220	323	4	902
2016	409	394	388	7	1,198
<b>Leitrim</b>					
2013	126	50	73	2	251
2016	185	73	102	3	363

	Single Person Household	Single Person with child/children	Couple with or without child/children	Multi-Adult Household	TOTAL
<b>Limerick City &amp; County</b>					
2013	1,367	743	673	27	2,810
2016	1,615	865	621	24	3,125
<b>Longford</b>					
2013	284	120	189	4	597
2016	253	159	227	5	644
<b>Louth</b>					
2013	1,735	1,125	932	17	3,809
2016	1,189	743	661	7	2,600
<b>Mayo</b>					
2013	683	358	390	48	1,479
2016	627	320	281	14	1,242
<b>Meath</b>					
2013	779	865	718	140	2,502
2016	1,148	1,095	971	97	3,311
<b>Monaghan</b>					
2013	332	168	190	6	696
2016	250	140	122	2	514
<b>Offaly</b>					
2013	466	285	417	9	1,177
2016	429	270	338	5	1,042
<b>Roscommon</b>					
2013	115	58	77	2	252
2016	223	146	190	1	560
<b>Sligo</b>					
2013	445	192	131	2	770
2016	479	197	119	6	801
<b>South Dublin</b>					
2013	1,626	2,661	1,853	77	6,217
2016	1,662	2,277	1,524	99	5,562
<b>Tipperary</b>					
2013	981	531	464	11	1,987
2016	901	581	371	5	1,858
<b>Waterford City &amp; County</b>					
2013	906	551	356	64	1,877
2016	731	511	325	29	1,596
<b>Westmeath</b>					
2013	870	439	570	14	1,893
2016	846	479	597	4	1,926
<b>Wexford</b>					
2013	901	656	510	20	2,087
2016	1,108	945	672	19	2,744
<b>Wicklow</b>					
2013	963	784	650	31	2,428
2016	939	884	670	18	2,511
<b>TOTAL 2013</b>	<b>39,803</b>	<b>27,005</b>	<b>22,174</b>	<b>890</b>	<b>89,872</b>
<b>TOTAL 2016</b>	<b>40,342</b>	<b>27,851</b>	<b>22,806</b>	<b>601</b>	<b>91,600</b>

**Table A1.5: Basis of Need by Local Authority, 2013 and 2016**

Key	Basis of Need													TOTAL
A	Dependent on Rent Supplement													
B	Unsuitable accommodation – household circumstances													
C	Require separate accommodation													
D	Institution, emergency accommodation or hostel													
E	Disability – physical													
F	Disability – sensory													
G	Disability – mental health													
Key	Basis of Need													TOTAL
H	Disability - Other													
I	Disability – intellectual													
J	Exceptional medical needs or compassionate grounds													
K	Overcrowded accommodation													
L	Unfit accommodation													
M	Unsustainable mortgage													

	A	B	C	D	E	F	G	H	I	J	K	L	M	TOTAL
<b>Carlow</b>														
2013	620	131	67	2	58	2	35	–	19	15	74	18	2	1,043
2016	276	199	63	14	31	3	31	–	18	9	50	12	13	719
<b>Cavan</b>														
2013	500	112	20	–	12	–	5	–	10	36	24	17	5	741
2016	133	394	96	2	18	1	17	–	22	8	31	13	26	761
<b>Clare</b>														
2013	977	567	135	27	72	9	95	8	26	68	29	15	4	2,032
2016	973	602	97	23	60	5	59	5	29	28	42	30	13	1,966
<b>Cork City</b>														
2013	3,604	1,345	898	160	86	16	96	–	21	59	139	15	1	6,440
2016	1,807	1,299	828	165	66	11	79	5	27	43	78	5	27	4,440
<b>Cork County</b>														
2013	3,143	1,094	97	12	168	20	76	9	25	94	59	4	3	4,804
2016	1,811	1,677	206	51	212	38	93	2	28	50	25	5	43	4,241
<b>Donegal</b>														
2013	809	628	51	1	20	2	10	1	4	124	18	7	–	1,675
2016	377	709	81	6	18	–	9	1	6	14	20	15	11	1,267
<b>Dublin City</b>														
2013	7,876	2,401	3,266	1,536	52	30	16	7	32	155	764		36	16,171
2016	7,782	3,155	4,224	2,908	13	4	19	7	13	350	1,086	180	70	19,811
<b>Dún Laoghaire-Rathdown</b>														
2013	1,004	650	555	194	85	5	73	121	87	459	169	2	2	3,406
2016	716	577	803	344	54	7	80	1	116	453	150	20	20	3,341
<b>Fingal</b>														
2013	4,375	842	516	38	15	6	14	7	3	110	82	9	3	6,020
2016	3,338	729	558	330	147	39	55	7	51	3	98	1,492	11	6,858
<b>Galway City</b>														
2013	1,522	570	131	59	30	6	21	–	23	67	36	4	2	2,471
2016	1,188	1,037	582	157	118	17	84	2	59	9	60	3	6	3,322
<b>Galway County</b>														
2013	1,324	342	112	10	78	1	98	–	11	34	40	46	3	2,099
2016	1,376	50	121	43	148	7	174	–	41	20	40	51	16	2,087
<b>Kerry</b>														
2013	1,514	1,945	77	35	165	34	125	–	21	133	36	27	–	4,112
2016	2,361	539	265	29	234	57	254	–	60	17	58	6	17	3,897
<b>Kildare</b>														
2013	1,815	2,012	1,042	120	38	2	25	4	60	121	169	32	14	5,454
2016	1,569	2,540	719	221	31	2	31	2	84	122	167	31	53	5,572
<b>Kilkenny</b>														
2013	683	670	73	29	18	3	14	–	29	85	40	20	6	1,670
2016	791	551	53	29	25	1	14	6	79	58	49	56	9	1,721
<b>Laois</b>														
2013	798	57	6	–	5	4	13	–	14	–	3	2	–	902
2016	939	157	32	5	11	3	10	–	20	–	8	3	10	1,198



	A	B	C	D	E	F	G	H	I	J	K	L	M	TOTAL
<b>Leitrim</b>														
2013	109	31	12	–	22	5	34	–	4	31	1	2	–	251
2016	183	41	21	–	11	5	42	–	15	38	–	3	4	363
<b>Limerick City and County</b>														
2013	1,703	304	333	149	33	5	21	2	50	99	88	13	10	2,810
2016	1,653	446	265	315	32	14	43	1	67	92	160	15	22	3,125
<b>Longford</b>														
2013	389	115	31	5	9	2	8	1	2	20	7	8	–	597
2016	460	88	35	7	6	–	5	3	3	17	6	–	14	644
<b>Louth</b>														
2013	950	2,227	120	40	36	6	14	11	170	149	69	11	6	3,809
2016	739	1,260	138	6	105	9	33	2	192	50	56	4	6	2,600
<b>Mayo</b>														
2013	1,037	179	27	6	38	1	35	6	20	93	20	14	3	1,479
2016	836	110	62	8	54	3	48	–	32	35	32	12	10	1,242
<b>Meath</b>														
2013	1,347	366	226	2	37	2	13	6	22	198	138	138	7	2,502
2016	1,899	375	354	7	71	40	38	–	37	161	184	100	45	3,311
<b>Monaghan</b>														
2013	228	79	66	1	9	–	5	–	13	197	24	72	2	696
2016	181	58	29	–	3	–	3	1	7	155	23	51	3	514
<b>Offaly</b>														
2013	732	141	102	6	61	2	15	8	10	13	38	48	1	1,177
2016	586	201	98	21	41	2	17	3	12	7	27	12	15	1,042
<b>Roscommon</b>														
2013	165	43	12	–	7	–	3	–	5	12	2	2	1	252
2016	451	16	11	–	20	–	22	–	10	4	16	7	3	560
<b>Sligo</b>														
2013	279	164	41	22	14	2	18	1	157	47	15	8	2	770
2016	6	459	63	51	9	2	33	–	135	20	6	8	9	801
<b>South Dublin</b>														
2013	3,899	644	953	169	32	1	5	1	135	–	364	7	7	6,217
2016	2,315	832	897	429	127	33	55	–	188	26	643	8	9	5,562
<b>Tipperary</b>														
2013	890	450	190	23	84	13	52	–	28	170	63	19	5	1,987
2016	763	414	219	23	87	12	83	2	32	131	36	29	27	1,858
<b>Waterford City and County</b>														
2013	1,045	461	135	48	19	3	8	32	15	54	47	3	7	1,877
2016	459	607	166	88	48	4	41	5	49	18	52	11	48	1,596
<b>Westmeath</b>														
2013	636	1,048	27	25	10	1	5	4	2	88	31	9	7	1,893
2016	878	741	31	53	30	4	19	1	17	26	55	29	42	1,926
<b>Wexford</b>														
2013	1,466	156	97	24	55	2	44	11	37	71	89	28	7	2,087
2016	1,586	214	242	36	242	17	150	1	77	9	72	53	45	2,744
<b>Wicklow</b>														
2013	1,145	575	169	65	24	5	38	4	23	107	218	47	8	2,428
2016	864	1,023	117	30	26	7	46	3	35	123	187	40	10	2,511
<b>TOTAL 2013</b>	<b>46,584</b>	<b>20,349</b>	<b>9,587</b>	<b>2,808</b>	<b>1,392</b>	<b>190</b>	<b>1,034</b>	<b>244</b>	<b>1,078</b>	<b>2,909</b>	<b>2,896</b>	<b>647</b>	<b>154</b>	<b>89,872</b>
<b>TOTAL 2016</b>	<b>39,296</b>	<b>21,100</b>	<b>11,476</b>	<b>5,401</b>	<b>2,098</b>	<b>347</b>	<b>1,687</b>	<b>60</b>	<b>1,561</b>	<b>2,096</b>	<b>3,517</b>	<b>2,304</b>	<b>657</b>	<b>91,600</b>

**Table A1.6: Breakdown of Accommodation Requirements by Local Authority, 2013 and 2016**

	General	Enduring physical, sensory, mental health or intellectual issue	Homeless	Traveller	Aged 65 years or more	TOTAL
<b>Carlow</b>						
2013	940	40	7	44	12	1,043
2016	639	30	12	36	2	719
<b>Cavan</b>						
2013	682	53		–	6	741
2016	705	54		–	2	761
<b>Clare</b>						
2013	1,861	63	10	35	63	2,032
2016	1,798	78	21	24	45	1,966
<b>Cork City</b>						
2013	6,121	168	127	14	10	6,440
2016	4,039	180	156	19	46	4,440
<b>Cork County</b>						
2013	4,296	286	12	95	115	4,804
2016	4,202	–	1	38	–	4,241
<b>Donegal</b>						
2013	1,600	16	1	16	42	1,675
2016	1,213	26	2	3	23	1,267
<b>Dublin City</b>						
2013	13,560	292	1,552	91	676	16,171
2016	15,037	412	2,866	196	1,300	19,811
<b>Dún Laoghaire-Rathdown</b>						
2013	2,834	386	84	25	77	3,406
2016	3,035	38	200	16	52	3,341
<b>Fingal</b>						
2013	5,589	145	30	148	108	6,020
2016	6,230	33	298	165	132	6,858
<b>Galway City</b>						
2013	2,170	52	49	174	26	2,471
2016	2,651	252	184	184	51	3,322
<b>Galway County</b>						
2013	1,768	97	11	164	59	2,099
2016	1,719	96	26	187	59	2,087
<b>Kerry</b>						
2013	3,448	412	44	91	117	4,112
2016	3,120	590	25	109	53	3,897
<b>Kildare</b>						
2013	5,048	172	71	60	103	5,454
2016	5,056	201	181	56	78	5,572
<b>Kilkenny</b>						
2013	1,592	38	26	7	7	1,670
2016	1,569	99	43	8	2	1,721
<b>Laois</b>						
2013	862	26	2	10	2	902
2016	1,152	25	5	15	1	1,198
<b>Leitrim</b>						
2013	156	59	–	25	11	251
2016	229	100	6	16	12	363

	General	Enduring physical, sensory, mental health or intellectual issue	Homeless	Traveller	Aged 65 years or more	TOTAL
<b>Limerick City &amp; County</b>						
2013	2,567	43	94	46	60	2,810
2016	2,491	148	349	96	41	3,125
<b>Longford</b>						
2013	525	20	6	36	10	597
2016	596	22	5	20	1	644
<b>Louth</b>						
2013	3,425	240	37	70	37	3,809
2016	2,121	273	95	85	26	2,600
<b>Mayo</b>						
2013	1,256	101	2	87	33	1,479
2016	1,030	96	3	74	39	1,242
<b>Meath</b>						
2013	2,273	128	28	60	13	2,502
2016	2,892	190	20	118	91	3,311
<b>Monaghan</b>						
2013	650	35	–	3	8	696
2016	494	12	–	1	7	514
<b>Offaly</b>						
2013	1,014	83	6	56	18	1,177
2016	928	56	13	28	17	1,042
<b>Roscommon</b>						
2013	221	12	–	11	8	252
2016	490	34	1	20	15	560
<b>Sligo</b>						
2013	515	203	10	19	23	770
2016	549	175	35	24	18	801
<b>South Dublin</b>						
2013	5,749	234	168	54	12	6,217
2016	4,794	324	381	24	39	5,562
<b>Tipperary</b>						
2013	1,739	156	15	45	32	1,987
2016	1,586	177	18	54	23	1,858
<b>Waterford City &amp; County</b>						
2013	1,705	92	40	13	27	1,877
2016	1,331	128	84	25	28	1,596
<b>Westmeath</b>						
2013	1,826	46	13	6	2	1,893
2016	1,768	83	51	13	11	1,926
<b>Wexford</b>						
2013	1,771	164	16	70	66	2,087
2016	2,139	421	23	87	74	2,744
<b>Wicklow</b>						
2013	2,215	57	38	57	61	2,428
2016	2,277	103	55	37	39	2,511
<b>TOTAL 2013</b>	<b>79,978</b>	<b>3,919</b>	<b>2,499</b>	<b>1,632</b>	<b>1,844</b>	<b>89,872</b>
<b>TOTAL 2016</b>	<b>77,880</b>	<b>4,456</b>	<b>5,159</b>	<b>1,778</b>	<b>2,327</b>	<b>91,600</b>

**Table A1.7: Breakdown of the Current Tenure of Households Qualified and in Need of Social Housing Support by Local Authority, 2013 and 2016**

	Private rented accom with RS*	Private rented accom without RS	Living with parents	Living with	Emergency accom/ none	Owner occupier	Other	TOTAL
<b>Carlow</b>								
2013	670	145	128	31	–	4	65	1,043
2016	295	172	133	53	11	16	39	719
<b>Cavan</b>								
2013	145	464	56	15	1	14	46	741
2016	132	415	101	37	3	31	42	761
<b>Clare</b>								
2013	1,014	549	188	121	8	35	117	2,032
2016	626	730	271	144	31	36	128	1,966
<b>Cork City</b>								
2013	2,572	2,487	798	276	12	14	281	6,440
2016	1,449	1,730	757	235	106	19	144	4,440
<b>Cork County</b>								
2013	2,167	1,687	523	223	21	50	133	4,804
2016	2,014	1,306	525	180	47	60	109	4,241
<b>Donegal</b>								
2013	737	610	191	72	–	24	41	1,675
2016	459	427	192	83	12	35	59	1,267
<b>Dublin City</b>								
2013	8,536	2,148	3,707	236	1,310	–	234	16,171
2016	7,306	4,341	4,104	929	2,663	75	393	19,811
<b>Dún Laoghaire-Rathdown</b>								
2013	874	987	681	188	–	–	676	3,406
2016	671	746	527	253	86	7	1,051	3,341
<b>Fingal</b>								
2013	3,370	1,659	543	220	6	7	215	6,020
2016	2,040	3,537	514	223	312	17	215	6,858
<b>Galway City</b>								
2013	1,357	798	66	102	67	4	77	2,471
2016	1,346	1,340	223	177	206	12	18	3,322
<b>Galway County</b>								
2013	1,061	666	186	77	3	49	57	2,099
2016	973	654	205	80	27	49	99	2,087
<b>Kerry</b>								
2013	1,394	2,048	343	176	26	27	98	4,112
2016	1,832	1,352	381	170	29	45	88	3,897
<b>Kildare</b>								
2013	1,786	1,963	844	455	10	25	371	5,454
2016	1,675	1,827	879	528	127	82	454	5,572
<b>Kilkenny</b>								
2013	693	377	223	176	36	23	142	1,670
2016	454	507	268	177	47	36	232	1,721
<b>Laois</b>								
2013	392	427	46	22	–	6	9	902
2016	350	604	98	47	11	64	24	1,198
<b>L Leitrim</b>								
2013	160	55	20	6	–	7	3	251
2016	187	102	30	20	2	14	8	363

\* RS: rent supplement

	Private rented accom with RS*	Private rented accom without RS	Living with parents	Living with	Emergency accom/ none	Owner occupier	Other	TOTAL
<b>Limerick City &amp; County</b>								
2013	1,275	617	370	234	9	30	275	2,810
2016	923	838	598	298	143	30	295	3,125
<b>Longford</b>								
2013	91	350	76	32	–	8	40	597
2016	170	294	82	44	7	21	26	644
<b>Louth</b>								
2013	1,416	1,506	338	132	11	5	401	3,809
2016	896	821	398	169	107	10	199	2,600
<b>Mayo</b>								
2013	818	448	116	40	1	14	42	1,479
2016	708	291	139	49	5	11	39	1,242
<b>Meath</b>								
2013	1,477	565	269	86	–	54	51	2,502
2016	1,252	1,140	476	181	22	138	102	3,311
<b>Monaghan</b>								
2013	270	274	68	33	–	5	46	696
2016	125	231	88	36	3	9	22	514
<b>Offaly</b>								
2013	510	410	142	61	1	29	24	1,177
2016	423	363	147	53	9	15	32	1,042
<b>Roscommon</b>								
2013	137	67	25	10	–	6	7	252
2016	227	241	42	21	2	14	13	560
<b>Sligo</b>								
2013	281	172	89	40	2	7	179	770
2016	242	207	102	49	26	13	162	801
<b>South Dublin</b>								
2013	3,899	709	956	355	144	6	148	6,217
2016	2,395	816	1,246	439	386	7	273	5,562
<b>Tipperary</b>								
2013	957	594	162	114	23	44	93	1,987
2016	708	521	258	149	62	57	103	1,858
<b>Waterford City &amp; County</b>								
2013	800	532	229	117	5	14	180	1,877
2016	440	552	251	113	64	44	132	1,596
<b>Westmeath</b>								
2013	769	642	201	100	6	21	154	1,893
2016	821	632	216	99	27	44	87	1,926
<b>Wexford</b>								
2013	1,242	313	259	121	1	35	116	2,087
2016	1,486	610	321	138	28	61	100	2,744
<b>Wicklow</b>								
2013	1,239	505	394	151	24	28	87	2,428
2016	1,194	557	417	152	32	34	125	2,511
<b>TOTAL 2013</b>	<b>42,109</b>	<b>24,774</b>	<b>12,237</b>	<b>4,022</b>	<b>1,727</b>	<b>595</b>	<b>4,408</b>	<b>89,872</b>
<b>TOTAL 2016</b>	<b>33,819</b>	<b>27,904</b>	<b>13,989</b>	<b>5,326</b>	<b>4,643</b>	<b>1,106</b>	<b>4,813</b>	<b>91,600</b>

\* RS: rent supplement

**Table A1.8: Length of Time on Record of Qualified Households, 2013 and 2016 by Local Authority, 2013 and 2016**

	Less than 6 months	6 - 12 months	1 - 2 years	2 - 3 years	3 - 4 years	4 - 5 years	5 - 7 years	More than 7 years	TOTAL
<b>Carlow</b>									
2013	179	172	213	129	106	117	78	49	1,043
2016	94	103	109	96	113	76	42	86	719
<b>Cavan</b>									
2013	231	217	156	53	36	19	18	11	741
2016	70	112	169	156	134	71	26	23	761
<b>Clare</b>									
2013	291	221	303	375	225	248	200	169	2,032
2016	238	233	328	251	221	154	257	284	1,966
<b>Cork City</b>									
2013	685	646	1,244	923	856	748	638	700	6,440
2016	311	341	613	494	506	401	814	960	4,440
<b>Cork County</b>									
2013	746	679	741	747	647	474	432	338	4,804
2016	376	361	529	622	713	436	539	665	4,241
<b>Donegal</b>									
2013	288	243	356	263	176	126	118	105	1,675
2016	197	135	240	258	169	88	111	69	1,267
<b>Dublin City</b>									
2013	1,919	1,381	2,053	2,075	2,097	2,006	2,147	2,493	16,171
2016	1,404	1,068	2,294	2,410	2,114	1,738	3,098	5,685	19,811
<b>Dún Laoghaire-Rathdown</b>									
2013	293	235	447	456	467	437	454	617	3,406
2016	179	169	406	391	386	337	602	871	3,341
<b>Fingal</b>									
2013	568	500	922	808	954	980	961	327	6,020
2016	272	386	706	675	614	715	1,417	2,073	6,858
<b>Galway City</b>									
2013	243	266	445	436	243	268	253	317	2,471
2016	140	132	444	466	449	382	645	664	3,322
<b>Galway County</b>									
2013	463	292	419	298	143	197	175	112	2,099
2016	134	146	307	341	382	231	277	269	2,087
<b>Kerry</b>									
2013	268	291	600	774	771	417	465	526	4,112
2016	263	254	417	463	390	374	865	871	3,897
<b>Kildare</b>									
2013	461	356	523	1,092	1,107	971	684	260	5,454
2016	289	275	486	538	600	527	1,041	1,816	5,572
<b>Kilkenny</b>									
2013	223	168	394	355	234	169	96	31	1,670
2016	168	154	297	208	196	180	333	185	1,721
<b>Laois</b>									
2013	301	155	116	106	106	99	15	4	902
2016	123	115	235	233	247	104	63	78	1,198
<b>Leitrim</b>									
2013	51	46	48	32	30	10	26	8	251
2016	64	73	92	59	21	19	23	12	363

	Less than 6 months	6 - 12 months	1 - 2 years	2 - 3 years	3 - 4 years	4 - 5 years	5 - 7 years	More than 7 years	TOTAL
<b>Limerick</b>									
2013	394	345	664	434	284	213	262	214	2,810
2016	260	249	495	472	512	359	395	383	3,125
<b>Longford</b>									
2013	249	107	116	39	40	32	8	6	597
2016	119	79	158	89	106	50	30	13	644
<b>Louth</b>									
2013	419	388	590	635	588	597	451	141	3,809
2016	170	125	212	302	344	282	612	553	2,600
<b>Mayo</b>									
2013	243	174	190	247	160	147	182	136	1,479
2016	128	79	194	250	145	91	173	182	1,242
<b>Meath</b>									
2013	244	459	465	449	361	223	226	75	2,502
2016	165	112	392	539	543	599	652	309	3,311
<b>Monaghan</b>									
2013	130	132	164	107	57	40	21	45	696
2016	65	74	61	68	83	61	69	33	514
<b>Offaly</b>									
2013	238	193	204	205	130	100	65	42	1,177
2016	110	63	110	142	194	127	162	134	1,042
<b>Roscommon</b>									
2013	108	44	47	21	9	8	8	7	252
2016	79	83	155	145	69	14	8	7	560
<b>Sligo</b>									
2013	158	107	152	73	43	77	42	118	770
2016	103	82	195	136	70	40	34	141	801
<b>South Dublin</b>									
2013	565	584	843	1,151	1,022	885	841	326	6,217
2016	335	369	531	678	494	554	1,077	1,524	5,562
<b>Tipperary</b>									
2013	461	324	481	278	124	122	104	93	1,987
2016	261	200	290	309	284	180	182	152	1,858
<b>Waterford City &amp; County</b>									
2013	289	240	401	305	184	109	141	208	1,877
2016	174	143	197	266	252	163	231	170	1,596
<b>Westmeath</b>									
2013	350	248	346	270	237	182	159	101	1,893
2016	280	209	314	264	274	179	194	212	1,926
<b>Wexford</b>									
2013	346	233	408	368	230	132	195	175	2,087
2016	308	269	587	489	331	214	262	284	2,744
<b>Wicklow</b>									
2013	292	199	385	337	319	346	300	250	2,428
2016	163	145	280	265	312	226	445	675	2,511
<b>TOTAL 2013</b>	<b>11,696</b>	<b>9,645</b>	<b>14,436</b>	<b>13,841</b>	<b>11,986</b>	<b>10,499</b>	<b>9,765</b>	<b>8,004</b>	<b>89,872</b>
<b>TOTAL 2016</b>	<b>7,042</b>	<b>6,338</b>	<b>11,843</b>	<b>12,075</b>	<b>11,268</b>	<b>8,972</b>	<b>14,679</b>	<b>19,383</b>	<b>91,600</b>

**Table A1.9: Nationality (Main Applicant), 2013 and 2016 by Local Authority, 2013 and 2016**

	Irish Citizen	EEA Citizen	Non-EEA Citizen	TOTAL
<b>Carlow</b>				
2013	775	206	62	1,043
2016	552	120	47	719
<b>Cavan</b>				
2013	465	238	38	741
2016	522	197	42	761
<b>Clare</b>				
2013	1,535	399	98	2,032
2016	1,473	371	122	1,966
<b>Cork City</b>				
2013	4,610	1,247	583	6,440
2016	3,149	925	366	4,440
<b>Cork County</b>				
2013	3,290	1,280	234	4,804
2016	2,899	1,144	198	4,241
<b>Donegal</b>				
2013	1,305	322	48	1,675
2016	1,012	213	42	1,267
<b>Dublin City</b>				
2013	12,137	2,239	1,795	16,171
2016	14,652	3,296	1,863	19,811
<b>Dún Laoghaire-Rathdown</b>				
2013	2,677	336	393	3,406
2016	2,654	360	327	3,341
<b>Fingal</b>				
2013	3,179	1,772	1,069	6,020
2016	4,182	1,556	1,120	6,858
<b>Galway City</b>				
2013	1,560	719	192	2,471
2016	2,127	906	289	3,322
<b>Galway County</b>				
2013	1,556	482	61	2,099
2016	1,564	462	61	2,087
<b>Kerry</b>				
2013	2,628	1,248	236	4,112
2016	2,617	1,038	242	3,897
<b>Kildare</b>				
2013	3,732	1,283	439	5,454
2016	3,875	1,270	427	5,572
<b>Kilkenny</b>				
2013	1,274	311	85	1,670
2016	1,284	356	81	1,721
<b>Laois</b>				
2013	566	286	50	902
2016	745	348	105	1,198
<b>Leitrim</b>				
2013	167	71	13	251
2016	243	99	21	363



	Irish Citizen	EEA Citizen	Non-EEA Citizen	TOTAL
<b>Limerick City &amp; County</b>				
2013	2,224	407	179	2,810
2016	2,502	413	210	3,125
<b>Longford</b>				
2013	402	165	30	597
2016	416	176	52	644
<b>Louth</b>				
2013	2,528	960	321	3,809
2016	1,821	583	196	2,600
<b>Mayo</b>				
2013	1,025	392	62	1,479
2016	940	259	43	1,242
<b>Meath</b>				
2013	1,675	653	174	2,502
2016	2,322	803	186	3,311
<b>Monaghan</b>				
2013	475	208	13	696
2016	345	153	16	514
<b>Offaly</b>				
2013	900	247	30	1,177
2016	797	208	37	1,042
<b>Roscommon</b>				
2013	179	65	8	252
2016	362	173	25	560
<b>Sligo</b>				
2013	650	80	40	770
2016	640	99	62	801
<b>South Dublin</b>				
2013	4,243	1,337	637	6,217
2016	4,050	1,062	450	5,562
<b>Tipperary</b>				
2013	1,576	381	30	1,987
2016	1,508	320	30	1,858
<b>Waterford City &amp; County</b>				
2013	1,345	397	135	1,877
2016	1,177	321	98	1,596
<b>Westmeath</b>				
2013	1,355	411	127	1,893
2016	1,232	508	186	1,926
<b>Wexford</b>				
2013	1,663	378	46	2,087
2016	2,157	520	67	2,744
<b>Wicklow</b>				
2013	1,978	398	52	2,428
2016	2,016	451	44	2,511
<b>TOTAL 2013</b>	<b>63,674</b>	<b>18,918</b>	<b>7,280</b>	<b>89,872</b>
<b>TOTAL 2016</b>	<b>65,835</b>	<b>18,710</b>	<b>7,055</b>	<b>91,600</b>



# Appendix 2

## Background and Methodology

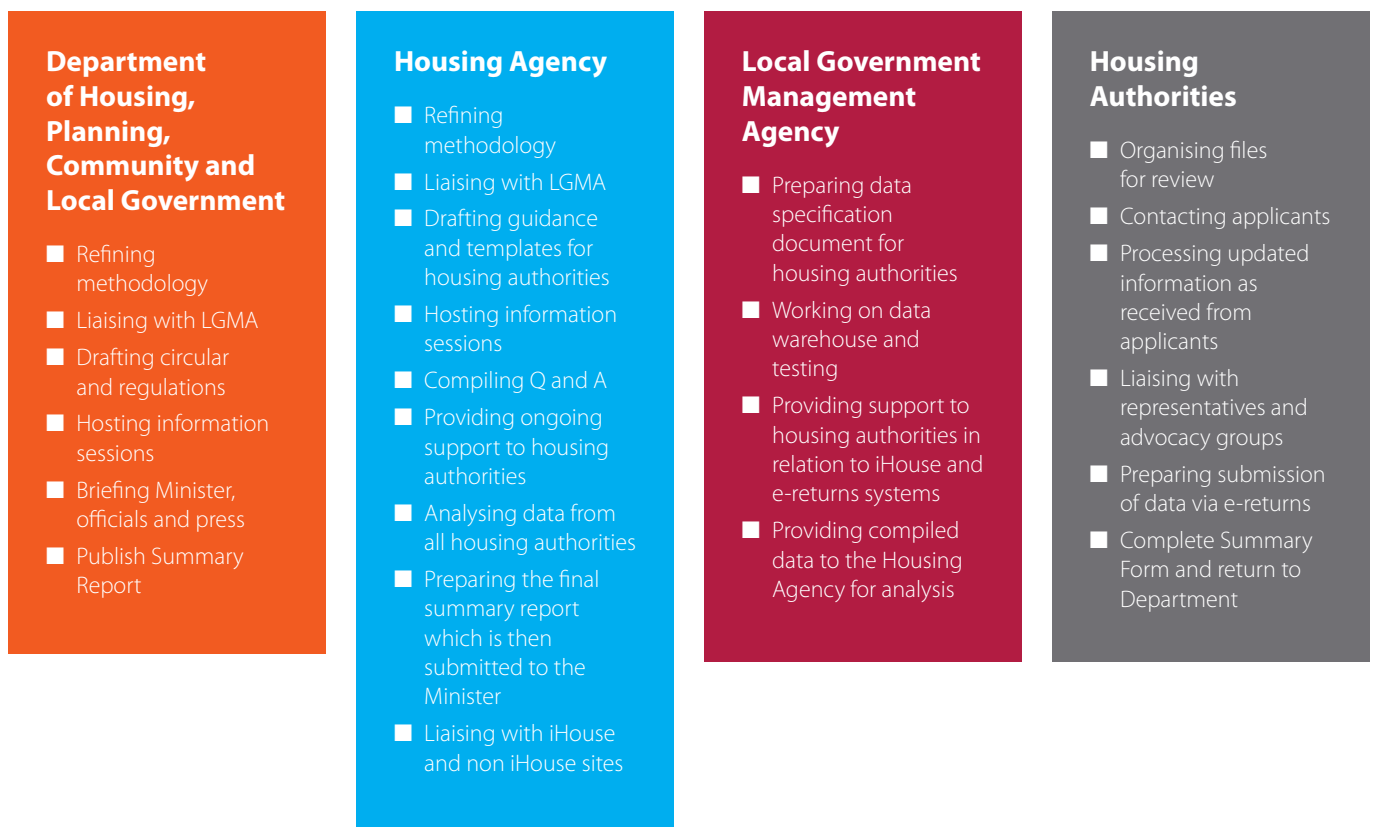


# Background

- 2.1. This Report provides details of the key findings from the 2016 Summary of Social Housing Assessments carried out by Local Authorities under Section 21 of the Housing (Miscellaneous Provisions) Act 2009 and the Social Housing Assessment (Summary) Regulations 2016.
- 2.2. The purpose of the Assessments is to count the **total number of households qualified** for social housing support across the country whose social housing need is not being met, in order to understand the level of need for such support. To qualify, households must be both eligible and in need of social housing support in accordance with the Social Housing Assessment Regulations.
- 2.3. Profile information is also collected as part of this process, which is needed to inform policy and to plan for the right types of housing support.
- 2.4. The summary data provided by local authorities is of all such qualified households at 21st September 2016. The methodology for this Summary is broadly similar to the process carried out for the last Summary, which took place in May 2013; the results from the two counts are comparable.
- 2.5. *Figure 3* below provides a summary of the various parties involved in the Summary of Social Housing Assessments, with some of the key actions carried out by the various parties highlighted.

The Government's *Action Plan for Housing and Homelessness: Rebuilding Ireland* commits Exchequer support of €5.35 billion to provide 47,000 social housing homes by 2021. The Assessment will help to ensure that supports delivered by social housing matches more closely the profile of those in need.

**Figure 3: Organisations Involved in the Summary of Social Housing Assessments**



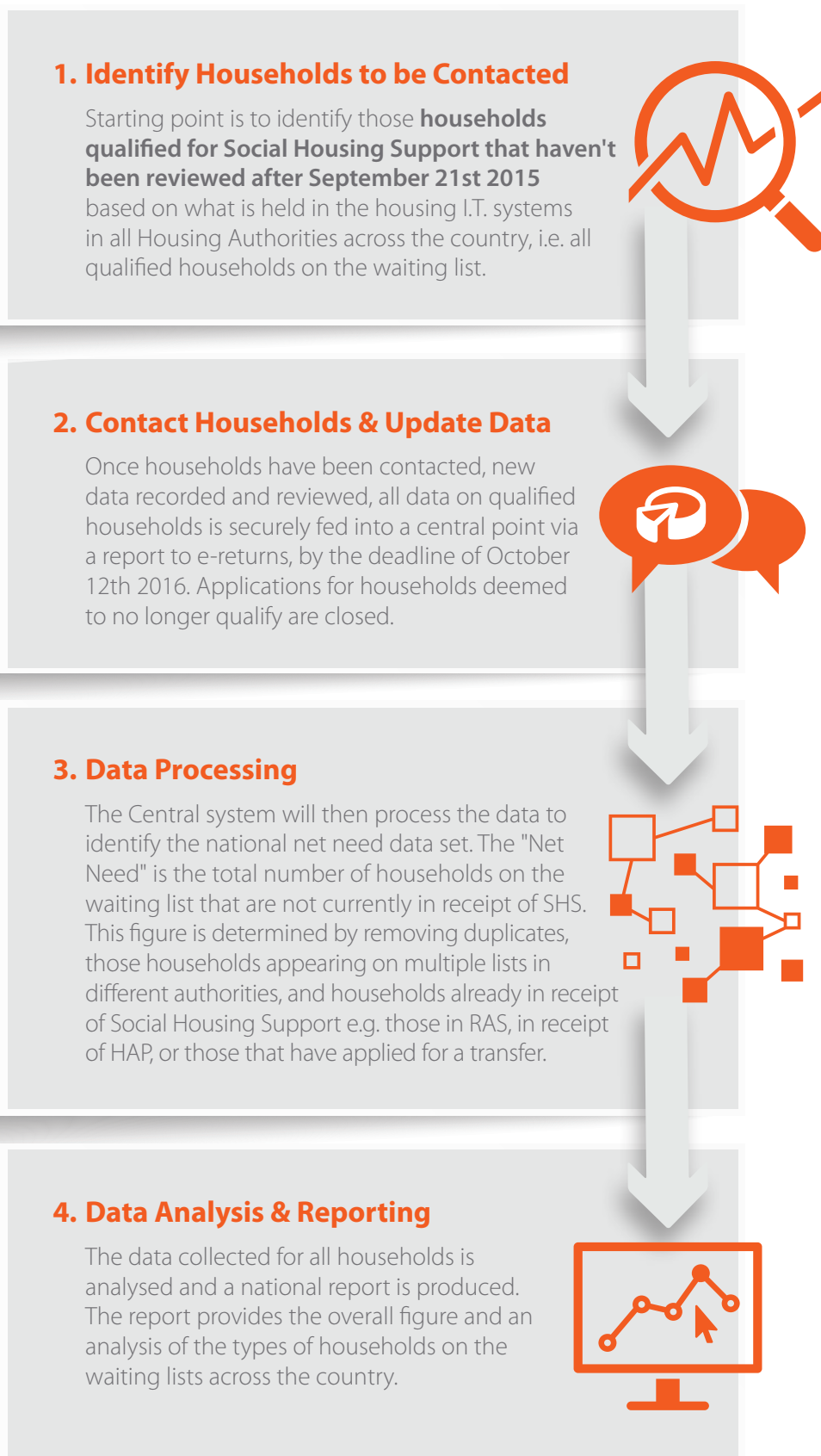
# Methodology

- 2.6. The process used to carry out the Summary of Social Housing Assessments is outlined in *Figure 4*. The purpose of this process is to ensure that the Net Need figure is as accurate as possible.
- 2.7. Local authorities were given detailed guidance in relation to the process to be carried out. In summary, households qualified or reviewed within 12 months of 21 September 2016 and still in need of social housing were included automatically. Households on the waiting list for longer than one year, who had not been recently reviewed, were written to and requested to update their details, including the following information:
  - I. Confirmation that they were still seeking social housing support.
  - II. Updated information (including verification documentation as required) for the following areas, to ensure that they qualify or continue to qualify in accordance with the Social Housing Assessment Regulations:
    - III. Any new household members (including relevant birth certificates).
    - IV. Any changes in circumstances of the household e.g. marital status, any medical conditions, details in relation to disabilities etc.
    - V. Any change to employment status.
    - VI. Income verification for all household members, suggested as P60 if in employment, latest accounts if self-employed and proof/receipt of social welfare if in receipt of social welfare.
    - VII. Details of rent or mortgage supplement, if in receipt of same.
- 2.8. In addition, any household on the system not yet fully assessed, was required to have their details updated in order to finalise a decision on their application.
- 2.9. Typically, households received a letter and form asking them for relevant information. Follow-up letters were issued to non-respondents. In some areas, authorities also texted or telephoned applicants, and raised general awareness of the process by placing advertisements in local newspapers and in other public offices. Under the guidelines, if a number of attempts to contact a household are made and there is no response, then an application may be closed. However, authorities were given discretion to reactivate an application where a household subsequently comes back with information, within a reasonable time.
- 2.10. A comparative analysis was carried out of reasons for applications closing in both 2013 and 2016. This showed variations in the reasons recorded for closures across local authorities. However, of the 24 authorities examined, there was an overall reduction of 16.3% in the number of closures in 2016 compared to 2013.
- 2.11. The data returned from applicants was verified and the waiting list up-dated based on the replies. Those assessed as not meeting the eligibility criteria for social housing were removed from the waiting-list.
- 2.12. The data was returned to the Local Government Management Agency where further data checks were carried out and duplicate applications removed. The data was then passed to the Housing Agency for analysis and reporting.

2.13. The key figure reported in the Summary Assessment of Housing Need is referred to as 'Net Need' - that is the **total number of households** qualified for social housing support but their need is not being met. This total excludes the following households:

- I. Duplicate applications – where a household has applied to more than one area for social housing, only their oldest application is included in the count. (Since 2011, a household can only apply to one housing authority). In this Assessment, 1,514 duplicate applications were identified.
- II. Already in receipt of social housing support, e.g. households currently living in local authority rented accommodation, voluntary/co-operative accommodation, accommodation provided under the Housing Assistance Payment (HAP) scheme, accommodation provided under the Rental Accommodation Scheme (RAS), or accommodation provided under the Social Housing Current Expenditure Programme (SHCEP).
- III. On a transfer list - any household that has applied for a transfer from an existing form of social housing support.

**Figure 4: Summary of Housing Needs Assessment Process Map**



## Notes







[www.rebuildingireland.ie](http://www.rebuildingireland.ie)  
[www.housing.ie](http://www.housing.ie)