

# Summary of Social Housing Assessments 2018

Key Findings





Housing Agency  
53 Mount Street Upper  
Dublin 2, D02 KT73

ISBN: 978-1-903848-53-1

*First published*  
September 2018

# Contents

<b>Abbreviations and glossary</b>	<b>3</b>
<b>Executive summary</b>	<b>5</b>
<b>Key findings</b>	<b>6</b>
<b>Introduction</b>	<b>7</b>
<b>Background and methodology</b>	<b>8</b>
<b>National and local figures</b>	<b>11</b>
<b>Household profile</b>	<b>15</b>
<b>Appendix One: Breakdown of tables by Local Authority</b>	<b>27</b>

## **List of tables**

Table 1.1: Number of Households (HH) Qualified for Social Housing Support by Local Authority	<b>13</b>
Table 1.2: Number of Households Qualified for Social Housing Support by Local Authority, Ordered by the Percentage Change in the Number of Households Qualified for Support	<b>14</b>
Table 2.1: Age Profile of Households (Main Applicant)	<b>17</b>
Table 2.2: Employment Status (Main Applicant)	<b>18</b>
Table 2.3: Sources of Household Income	<b>19</b>
Table 2.4: Household Composition	<b>20</b>
Table 2.5: Main Need for Social Housing Support	<b>21</b>
Table 2.6: Breakdown of Specific Accommodation Requirements	<b>22</b>
Table 2.7: Breakdown of the Current Tenure	<b>23</b>
Table 2.8: Length of Time on Record of Qualified Households (the Waiting List)	<b>24</b>
Table 2.9: Nationality (Main Applicant)	<b>25</b>
Table A1.1: Age Profile of Households (Main Applicant) Qualified for Social Housing Support by Local Authority	<b>28</b>
Table A1.2: Employment Status of Main Applicant Qualified for Social Housing Support by Local Authority	<b>30</b>

**List of tables / continued**

Table A1.3: Source of Income of Main Applicant Qualified for Social Housing Support by Local Authority	<b>32</b>
Table A1.4: Household Composition of Those Qualified for Social Housing Support by Local Authority	<b>34</b>
Table A1.5: Main Need for Support for Those Households Qualified for Social Housing by Local Authority	<b>36</b>
Table A1.6: Breakdown of Accommodation Requirements of Those Qualified for Social Housing support by Local Authority	<b>38</b>
Table A1.7: Breakdown of the Current Tenure of Households Qualified for Social Housing Support by Local Authority	<b>40</b>
Table A1.8: Length of Time on Record of Qualified Households (Waiting List) by Local Authority	<b>42</b>
Table A1.9: Nationality (Main Applicant) of Those Qualified for Social Housing Support by Local Authority	<b>44</b>

**List of figures**

Organisations Involved in the Summary of Social Housing Assessments	<b>9</b>
Summary of Social Housing Assessments Process Map	<b>10</b>
Figure 2.1: Age Profile of Households (Main Applicant)	<b>17</b>
Figure 2.2: Employment Status (Main Applicant)	<b>18</b>
Figure 2.3: Sources of Household Income	<b>19</b>
Figure 2.4: Household Composition	<b>20</b>
Figure 2.5: Main Need for Social Housing Support	<b>21</b>
Figure 2.6: Breakdown of Specific Accommodation Requirements	<b>22</b>
Figure 2.7: Breakdown of the Current Tenure	<b>23</b>
Figure 2.8: Length of Time on the Record of Qualified Households (the Waiting List)	<b>24</b>
Figure 2.9: Nationality (Main Applicant)	<b>25</b>

# Abbreviations and glossary

<b>HAP:</b>	Housing Assistance Payment. This form of social housing support involves the payment by a local authority of rent for a dwelling to a landlord on behalf of a qualified household in accordance with Part 4 of the Housing (Miscellaneous Provisions) Act 2014.
<b>HH:</b>	Households.
<b>LGMA:</b>	Local Government Management Agency. The LGMA is a state agency under the aegis of the Department of Housing, Planning and Local Government established in 2012 to provide a range of services to the Local Government Sector.
<b>Main need for support:</b>	This is established with reference to Section 23 of the Social Housing Assessment Regulations 2011. Households may have specific accommodation requirements that are not captured under this heading.
<b>Qualified for social housing support:</b>	Households deemed as eligible for and in need of social housing support whose social housing need is not being met.
<b>RAS:</b>	Rental Accommodation Scheme. Originally a social housing support introduced to cater for the accommodation needs of persons who are in receipt of long-term rent supplement to bring them under the remit of the local authority. Under RAS, local authorities enter contracts with accommodation providers for specified time periods and/or tenancy terms.

<b>RS:</b>	Rent Supplement. A means-tested payment for certain people living in private rented accommodation who cannot provide for the cost of their accommodation from their own resources. In the past, you could apply for Rent Supplement if you were qualified for social housing support and were on the local authority's housing list. However, people in this situation now apply for the Housing Assistance Payment (HAP).
<b>SSHA:</b>	Summary of Social Housing Assessments.
<b>SHCEP:</b>	Social Housing Current Expenditure Programme.
<b>Specific accommodation requirements:</b>	Refers to the classification of accommodation requirements as set out in the Social Housing Assessment Regulations 2011. Specific accommodation requirements are used to determine the form of social housing support appropriate for a qualified household.
<b>Waiting list:</b>	Being qualified for social housing support ( <i>see above</i> ) is commonly referred to as being on the waiting list. The terms are used interchangeably throughout the document.

# Executive summary

The Summary of Social Housing Assessments 2018 brings together information provided by local authorities on households in their functional area that are qualified for social housing support but whose social housing need is not currently being met. It is a point-in-time assessment of the identified need for social housing support across the country.

**Purpose of the Assessment:** This is a statutory assessment to count the total number of households qualified for social housing support across the country on 11 June 2018, in order to better inform policy and plan for the delivery of the right types of housing support.

**'Net need' or the total number of households qualified:** This is the total number of households qualifying for social housing support whose social housing need is not being met. All the figures in this report are based on net need. The methodology used to produce these figures is outlined on pages 8 and 9.

**Criteria:** Households must be qualified for social housing support. Households currently living in local authority rented accommodation, voluntary/co-operative accommodation, accommodation provided under the Housing Assistance Payment (HAP) scheme, accommodation provided under the Rental Accommodation Scheme (RAS), accommodation provided under the Social Housing Capital Expenditure Programme (SHCEP) schemes or any household on a transfer list are not included in the total number.

## Net Need Figures

Total Number of Qualified Households 2018

**71,858**

Total Number of Qualified Households 2017

**85,799**

Change between 2017 and 2018:

**-13,941 (-16.2%)**

Count date for the 2017 Assessment: 28 June 2017

Count date for the 2018 Assessment: 11 June 2018



# Key findings 2018

- In total, 71,858 households were assessed as qualified for housing support as of 11 June 2018.



- **The number of households on the waiting list decreased by 13,941 (-16.2%) compared to the previous assessment in June 2017, with 29 of the 31 local authorities reporting a decrease.**

- The four Dublin Authorities (Dublin City, Dún Laoghaire-Rathdown, Fingal and South Dublin) account for 43.4% of the national total.

- **The majority (54.2%) of those qualified for social housing support are unemployed and in receipt of social welfare payments/assistance. The number of households in this category dropped by 10,370 (-21%) since the previous assessment.**



- Single person households are the predominant household grouping in need of social housing support.



- **Just over one-third of all households on the waiting list are in receipt of rent supplement, the most commonly cited basis of need for social housing support.**



- Just under 60% of households qualified for social housing support are currently in the private rented sector.

- **The number of households whose basis of need was listed as 'homeless, institution, emergency accommodation or hostel' rose by 13.8% (686 households) since the 2017 assessment.**



- Over a quarter of all households qualified for support are waiting more than seven years for a social housing support.



# Introduction

## What is it?

The purpose of the Summary of Social Housing Assessments (SSHA) is to capture the total number of households qualified for social housing support across the country whose social housing need is not being met, in order to better understand the level of need for such support. It is a snap shot at a point in time of the housing lists of 31 local authorities. This year's count was carried out on 11 June 2018.

The format of this report provides a breakdown of the national social housing need by various categories, such as;

- Age profile and employment status of the primary applicant
- Source of household income
- Basis of need for housing support
- Specific accommodation requirements

A breakdown of all the main tables by local authority area is available in Appendix One. All the tables published here, along with those of previous assessments are available for download on the Housing Agency's website ([www.housingagency.ie](http://www.housingagency.ie)).

## Need for social housing support

Sections of this report break down the identified net need for social housing supports with reference to each qualified households' main need for support (often referred to as the "basis of need"). When determining the main need for support, local authorities must consider the household's current accommodation and the household's circumstances at the time of applying. Regulation 23 of the Social Housing Assessment Regulations 2011 details the types of needs that must be considered when making a determination on a household's main requirement for support. For example, under Regulation 23, local authorities must determine if the household applying for support is dependent on rent supplement or living in unfit accommodation. In addition, the regulations require local authorities to determine if a member of the

household is homeless, living in an institution, emergency accommodation or hostel. This category of need, and the method used to collect the data, differs from other counts of homelessness. The SSHA is administrative data that gives a point in time picture of those households recorded on local authority housing lists that are qualified for social housing support. National data reported on homelessness includes data on rough sleepers and individuals that are homeless who have never engaged with a local authority in relation to applying for social housing support. Therefore, the number of households recorded in this category of need will differ from figures on homelessness that are published elsewhere.

## Who is reported on?

The reported data refers only to households who have been deemed qualified for social housing support. This means that households who are already living in local authority or approved housing body accommodation, or accommodation provided via the Housing Assistance Payment (HAP), the Rental Accommodation Scheme (RAS) or accommodation provided under the Social Housing Capital Expenditure Programme, are excluded from this report. Households in these categories of social housing support are deemed to have had their housing need met.

## Why produce the report?

The SSHA provides an up-to-date picture of the level of need for social housing support and the types of supports that are required. In line with the commitment contained in *Social Housing Strategy 2020 – Support, Supply & Reform*, the 2018 Summary is the continuation of a process of annualised assessments of identified national housing need that commenced with the 2016 Summary. The results of the SSHA provide planners and policymakers important information so as to allow for the delivery of the right types of housing supports in the right locations to the people who need it most. The data contained in the SSHA is also an important reference point for assessing progress towards the realisation of the objectives in *Rebuilding Ireland – Action Plan for Housing and Homelessness*.

# Background and methodology

The SSHA is carried out by local authorities under Section 21 of the Housing (Miscellaneous Provisions) Act 2009 and the Social Housing Assessment (Summary) Regulations 2016. To qualify for social housing support, households must be both eligible for and in need of social housing support.

The key figure reported in the SSHA is referred to as 'net need'. Net need is the total number of households qualified for social housing support whose need for support is not being met. This total excludes the following households:

- I. Duplicate applications – A standardised procedure for social housing assessments was introduced in 2011, which restricted households from applying to more than one local authority. Prior to this, households could apply for social housing support to multiple authorities. Where a household has applied to more than one authority for social housing support, only their first application was included in the count. In this Assessment, 886 duplicate applications were identified.
- II. Those in receipt of social housing support—for example, households currently living in local authority rented accommodation, voluntary/co-operative accommodation, accommodation provided under the HAP scheme, accommodation provided under the RAS, or accommodation provided under the SHCEP schemes.
- III. Households on a transfer list—any household that has applied for a transfer from an existing form of social housing support including HAP.

Information on the profile of households qualified for social housing support is also collected as part of this process. This information informs social housing policy and enhances the capacity of local authorities to plan to provide the right types of housing support.

*Rebuilding Ireland – An Action Plan for Housing and Homelessness* commits Exchequer support of over €6 billion to provide 50,000 social housing tenancy supports by 2021. The SSHA helps to ensure the social housing supports delivered match more closely the profile of those in need.

The process used to carry out the SSHA is outlined on page 10. The purpose of this process is to ensure that the net need for social housing support on the count date is recorded as accurately as possible.

Local authorities were given detailed guidance in relation to the process to be carried out. Households entered on the waiting list or reviewed after 20 April 2017 could be included in the return without a need to update the existing record, unless the housing authority was aware of a particular reason to update the file. All other qualified households (all households other than those entered on the list or assessed since 20 April 2017) were written to and requested to update their details, including the following information:

- I. Confirmation that they were still seeking social housing support.
- II. Updated information (including verification documentation, as required) to ensure that they qualify or continue to qualify in accordance with the Social Housing Assessment Regulations.
- III. Any new household members.
- IV. Any changes in circumstances of the household—a recent change in marital status, for instance.
- V. Any change to employment status.
- VI. Income verification for all household members.
- VII. Details of rent or mortgage supplement, if in receipt of this form of state support.

In addition, any household on the system not yet fully assessed was required to have their details updated in order to finalise a decision on their application.

Typically, households received a letter that outlined the need to engage with the local authority regarding their application for housing support and a form asking them for relevant information. Follow-up letters were issued to non-respondents. In some areas, authorities also texted or telephoned applicants, and raised general awareness of the process by placing advertisements in local newspapers and in other public offices. The guidelines underpinning the SSHA allow an application to be closed, if a number of attempts to contact a household are made and there is no response. However, authorities were given discretion to reactivate an application where, within a reasonable time frame, a household that was removed from the list due to a failure to engage with the process subsequently provided information that demonstrated they remained qualified for social housing support.

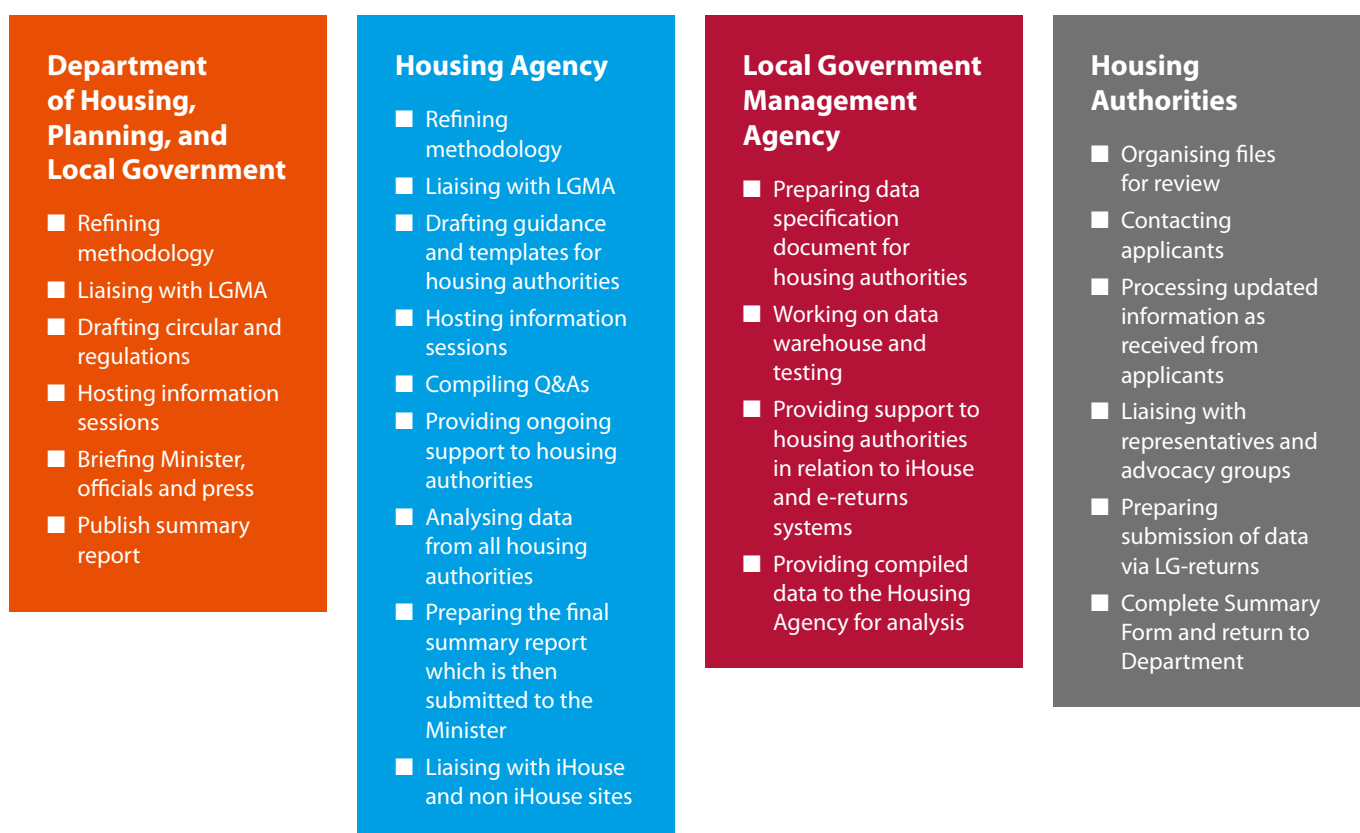
The data returned from applicants was verified and the waiting list updated based on the replies. Those assessed as not meeting the eligibility criteria for social housing were removed from the waiting list.

The data was returned to the Local Government Management Agency (LGMA), where further data checks were carried out and duplicate applications removed. The data was then passed to the Housing Agency for analysis and reporting.

The summary data provided by local authorities is of all qualified households at 11 June 2018. The methodology underpinning SSHA 2018 is similar to the process carried out for the last Summary, which took place in June 2017. The results from the two counts are comparable.

The figure below provides a summary of the various parties involved in the SSHA, with some of the key actions carried out by the various parties highlighted.

## Organisations Involved in the Summary of Social Housing Assessments



## Summary of Housing Needs Assessment Process Map

### 1. Identify Households to be Contacted

Starting point is to identify those households qualified for Social Housing Support that have not been reviewed since 20 April 2017 based on what is held in the housing I.T. systems in all Housing Authorities across the country, i.e., all qualified households on the waiting list.



### 2. Contact Households & Update Data

Once households have been contacted, new data recorded and reviewed, all data on qualified households is securely fed into a central point via a report to LG-returns, by the deadline of 29 June 2018. Applications for households deemed to no longer qualify for support are closed.



### 3. Data Processing

The data is processed through a central system to identify the national net need dataset. The net need figure is determined by removing duplicates, those households appearing on multiple lists in different authorities, and households already in receipt of social housing support—for example, those in RAS, in receipt of HAP, or those that have applied for a transfer.



### 4. Data Analysis & Reporting

The data collected for all households is analysed and a national report is produced, the Summary of Social Housing Assessments 2018. The report provides the overall figure and an analysis of the types of households on the waiting lists across the country.



# National and local figures

71,858 households were assessed as qualified for housing support as of 11 June 2018. The number of households qualified for support decreased by 13,941 (16.2%) compared to the assessment carried out in 2017.

The SSHA 2018 is the third annual assessment, following on from the assessments of need conducted in September 2016 and June 2017.

Timely data on the requirement for social housing that is grounded in the application of clear guidelines provides a more precise snap shot of the scale of need and the types of supports required.

The results of this year's assessment are comparable to data derived from assessments conducted in 2013, 2016 and 2017, as these assessments were guided by a common legislative framework.

In total, 71,858 households were assessed as qualified for housing support as of 11 June 2018. The number of households on the waiting list decreased by 13,941 households (-16.2%) compared to the assessment conducted in June 2017. Table 1.1 presents the number of households deemed qualified for social housing support by local authority area.

Of the 31 local authorities, Dublin City has by far the greatest identified need for social housing support, with 16,514 households on the waiting list, representing over one fifth (23%) of all households qualified for housing support. The four Dublin local authorities combined (Dublin City, Dún Laoghaire-Rathdown, Fingal and South Dublin) have 31,196 households on their waiting lists, a decrease of 4,471 households (12.5%) compared to June 2017. Together, the four Dublin authorities account for 43.4% of the national total.

The Mid-East (Kildare, Meath and Wicklow) and Louth, have 9,946 households identified as being qualified for social housing support. This figure was down by nearly 20% (2,460 households) on the 2017 assessment. This region now accounts for 13.8% of the national figure.

The downward trend is also observed in both Cork Authorities (Cork City and Cork County). Overall figures for both authorities were down by over a quarter (2,337 households), now standing at a combined total of 6,627 households. This represents 9.2% of the overall national figure.

Across the two Galway authorities (Galway City and Galway County) there are a total of 3,547 households on the waiting list, a decrease of 622 households (14.9%) since June 2017. There is an almost 50/50 split between the two authorities, with 1,728 households within Galway City and 1,819 for Galway County. Overall, Galway accounts for just under 5% of the national total.

Limerick City and County Council reported 2,517 households deemed qualified for social housing support, which represents 3.5% of the national total and a 12.3% drop on the 2017 figure.

As of the June 2018 count date, all but two of the 31 local authorities (Cavan and Monaghan) reported a decrease in the number of households on their respective waiting lists compared to the results of the previous assessment in June 2017 (*see Table 1.2*).

There were 948 fewer households on the waiting list in Clare County Council in June this year compared to results reported in 2017. This decrease in qualified households was due to an error in their 2017 SSHA submission which was rectified during the 2018 process.

Other notable decreases between the two Assessments occurred in Louth (decrease of 708 households, or 31.5%), Roscommon (decrease of 169 households, or 31.4%) and Cork City (decrease of 1,255 households, or 28.7%).

**Table 1.1: Number of Households (HH) Qualified for Social Housing Support by Local Authority**

Local Authority	2017		2018		Change 2017/2018	
	No. of HH	%	No. of HH	%	No. of HH	%
Carlow	651	0.8	499	0.7	-152	-23.3
Cavan	705	0.8	737	1.0	32	4.5
Clare	1,952	2.3	1,004	1.4	-948	-48.6
Cork City	4,373	5.1	3,118	4.3	-1,255	-28.7
Cork County	4,591	5.4	3,509	4.9	-1,082	-23.6
Donegal	903	1.1	811	1.1	-92	-10.2
Dublin City	19,220	22.4	16,514	23.0	-2,706	-14.1
Dún Laoghaire-Rathdown	3,307	3.9	2,843	4.0	-464	-14.0
Fingal	7,271	8.5	6,993	9.7	-278	-3.8
Galway City	2,219	2.6	1,728	2.4	-491	-22.1
Galway County	1,950	2.3	1,819	2.5	-131	-6.7
Kerry	3,217	3.7	2,910	4.0	-307	-9.5
Kildare	5,103	5.9	3,962	5.5	-1,141	-22.4
Kilkenny	1,230	1.4	968	1.3	-262	-21.3
Laois	1,342	1.6	1,024	1.4	-318	-23.7
Leitrim	327	0.4	302	0.4	-25	-7.6
Limerick City and County	2,870	3.3	2,517	3.5	-353	-12.3
Longford	655	0.8	542	0.8	-113	-17.3
Louth	2,249	2.6	1,541	2.1	-708	-31.5
Mayo	1,222	1.4	1,175	1.6	-47	-3.8
Meath	2,453	2.9	1,966	2.7	-487	-19.9
Monaghan	476	0.6	505	0.7	29	6.1
Offaly	917	1.1	657	0.9	-260	-28.4
Roscommon	538	0.6	369	0.5	-169	-31.4
Sligo	611	0.7	442	0.6	-169	-27.7
South Dublin	5,869	6.8	4,846	6.7	-1,023	-17.4
Tipperary	1,277	1.5	1,201	1.7	-76	-6.0
Waterford City and County	1,444	1.7	1,117	1.6	-327	-22.6
Westmeath	1,679	2.0	1,585	2.2	-94	-5.6
Wexford	2,577	3.0	2,177	3.0	-400	-15.5
Wicklow	2,601	3.0	2,477	3.4	-124	-4.8
<b>TOTAL</b>	<b>85,799</b>	<b>100.0</b>	<b>71,858</b>	<b>100.0</b>	<b>-13,941</b>	<b>-16.2</b>

**Table 1.2: Number of Households Qualified for Social Housing Support by Local Authority, Ordered by the Percentage Change in the Number of Households Qualified for Support**

Local Authority	2017		2018		Change 2017/2018	
	No. of HH	%	No. of HH	%	No. of HH	%
Clare	1,952	2.3	1,004	1.4	-948	-48.6
Louth	2,249	2.6	1,541	2.1	-708	-31.5
Roscommon	538	0.6	369	0.5	-169	-31.4
Cork City	4,373	5.1	3,118	4.3	-1,255	-28.7
Offaly	917	1.1	657	0.9	-260	-28.4
Sligo	611	0.7	442	0.6	-169	-27.7
Laois	1,342	1.6	1,024	1.4	-318	-23.7
Cork County	4,591	5.4	3,509	4.9	-1,082	-23.6
Carlow	651	0.8	499	0.7	-152	-23.3
Waterford City and County	1,444	1.7	1,117	1.6	-327	-22.6
Kildare	5,103	5.9	3,962	5.5	-1,141	-22.4
Galway City	2,219	2.6	1,728	2.4	-491	-22.1
Kilkenny	1,230	1.4	968	1.3	-262	-21.3
Meath	2,453	2.9	1,966	2.7	-487	-19.9
South Dublin	5,869	6.8	4,846	6.7	-1,023	-17.4
Longford	655	0.8	542	0.8	-113	-17.3
Wexford	2,577	3.0	2,177	3.0	-400	-15.5
Dublin City	19,220	22.4	16,514	23.0	-2,706	-14.1
Dún Laoghaire-Rathdown	3,307	3.9	2,843	4.0	-464	-14.0
Limerick City and County	2,870	3.3	2,517	3.5	-353	-12.3
Donegal	903	1.1	811	1.1	-92	-10.2
Kerry	3,217	3.7	2,910	4.0	-307	-9.5
Leitrim	327	0.4	302	0.4	-25	-7.6
Galway County	1,950	2.3	1,819	2.5	-131	-6.7
Tipperary	1,277	1.5	1,201	1.7	-76	-6.0
Westmeath	1,679	2.0	1,585	2.2	-94	-5.6
Wicklow	2,601	3.0	2,477	3.4	-124	-4.8
Mayo	1,222	1.4	1,175	1.6	-47	-3.8
Fingal	7,271	8.5	6,993	9.7	-278	-3.8
Cavan	705	0.8	737	1.0	32	4.5
Monaghan	476	0.6	505	0.7	29	6.1
<b>TOTAL</b>	<b>85,799</b>	<b>100.0</b>	<b>71,858</b>	<b>100.0</b>	<b>-13,941</b>	<b>-16.2</b>



# Household profile

The majority of households qualified for social housing support on the June 2018 count date reside in the private rented sector. Being in receipt of rent supplement is the most cited main need for support. The SSHA 2018 has seen a significant drop in the number of households for both categories.

The 16.2% reduction in the overall number of households on the waiting list is reflected across all age categories of main applicants (*see Table 2.1*). Households where the main applicant is between 30 and 39 years of age account for nearly a third (23,105 households) of all households in need of social housing support. This age group has decreased by approximately one fifth (5,380 households) from last year's assessment. Similarly, those households with a main applicant aged between 25 – 29 years old, saw a decrease of just over 20% (2,630 households). The number of households where the main applicant is aged 60 years or more fell by 6.4% (424 households).

With regards to the employment status of the main applicant for each household, those considered 'unemployed and in receipt of social welfare benefit' remain the largest category, accounting for over half (38,948 households) of all households assessed on the count date (*see Table 2.2*). There has been a significant reduction within this category since 2017, with numbers decreasing by over one fifth (10,370 households).

The number of households where the main applicant's employment status is defined as 'one parent family support only', reported the largest year-on-year percentage decrease of any employment category, dropping by nearly a quarter (1,620 households). Both these decreases are also reflected in Table 2.3, where the number of households with an income source of 'social welfare only' dropped by almost one fifth (9,833 households).

The exception to the decrease in numbers across all employment status categories was among households where the main applicant is a pensioner or retired. This category reported a slight increase of 1.4% (26 households) since the previous assessment.

Single person households are still the predominant household grouping, accounting for just under half (33,556 households) of the overall total (*see Table 2.4*). This is despite a decrease of 12.1% (4,614 households) on June 2017. When combined, single person households with and without children account for over three quarters (55,751 households) of all households on the waiting list.

Being in receipt of rent supplement is still the most commonly cited basis of need for social housing support, with the number standing at 25,023 households as of 11 June 2018 (see Table 2.5). This represents just over one-third of all households on the waiting list. The number of such households has decreased by almost 30% (10,181 households) over the last year. The reduced share of households with a primary basis of need relating to the receipt of rent supplement may partly be explained by the continued roll-out of HAP. At the time of the 2017 Assessment there were a total of 23,506 active HAP tenancies. Since then, the number of active HAP tenancies increased by 13,589 i.e. there were 37,095 active HAP tenancies at the time of the 2018 Assessment.

'Unsuitable accommodation – particular household circumstances' is the second most frequently cited main need for social housing support, with over a quarter (18,920 households) of all households on the waiting list in this category. This category experienced a drop of just over 10% (2,210 households) since the previous assessment. This category includes households which are not in receipt of rent supplement but may have financial difficulty meeting their accommodation costs.

While most categories for main need have decreased since June 2017, there were two exceptions. The number of households whose main need was listed as 'homeless, institution, emergency accommodation or hostel' rose by 13.8% (686 households) to 5,663. There was also a 17% (127 households) increase in the number of households whose main need was due to an unsustainable mortgage.

The majority (82.4%) of households on the waiting list have no specific accommodation requirement (see Table 2.6). Among those that have a specific accommodation requirement, 4,037 household's specific requirement stems from a member(s) having a physical, sensory, mental or intellectual impairment, while a further 1,967 households have a specific requirement due to a member(s) being aged 65 years or more.

The number of households with a specific requirement due to a household member(s) being homeless, rose by 11.8% since the previous assessment to 5,329 households. This is in keeping with the increasing trend observed among households whose main need for support was categorised as 'homeless, institution, emergency accommodation or hostel'.

Most of the households qualified for social housing support reside in the private rented sector. Such households account for just under 60% (42,467 households) of the entire waiting list (see Table 2.7).

Since the last assessment, the number of households within this category has fallen by nearly a quarter (12,959 households). This is in tandem with the 28.9% (10,181 households) reduction in the number whose main need for support was cited as 'dependent on rent supplement'.

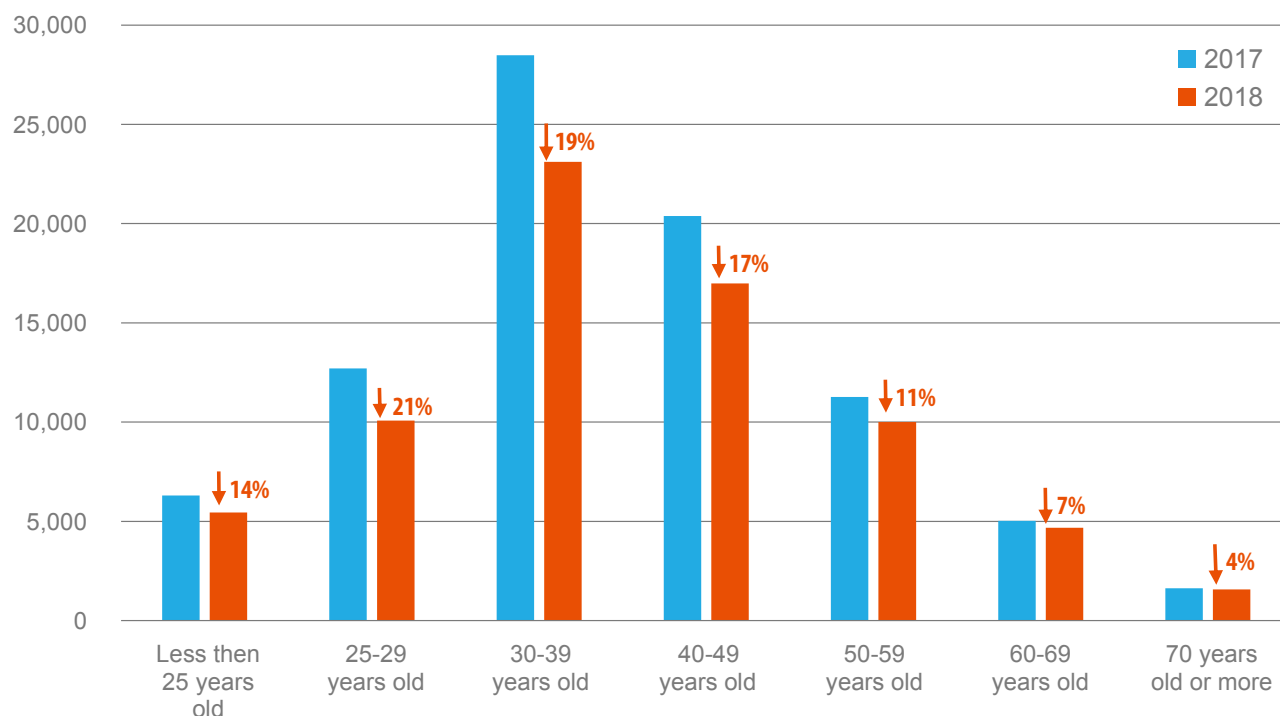
The number of households qualified for social housing support and living with a parent, relative or friend decreased by 6.3% (1,294 households) since June 2017 and account for over a quarter of the entire waiting list.

Two categories of tenure have witnessed an increase since the last assessment. The number of households with a tenure described as 'emergency accommodation/ none' has increased by 9.1% (397 households). The number of owner occupier households has also risen, increasing by 8.7% (97 households) since June 2017. This is in parallel with the increase among households whose main need stemmed from an unsustainable mortgage.

Over a quarter (19,185) of the 71,858 households qualified for social housing support were waiting for more than seven years as of 11 June 2018 (see Table 2.8). There was a 7.8% (1,618 households) reduction in the number of households waiting for this length of time compared to the previous assessment. The biggest reduction was among households waiting for between three and four years, which decreased by 34% (3,404 households), while the numbers waiting between two and three years fell by just over a quarter.

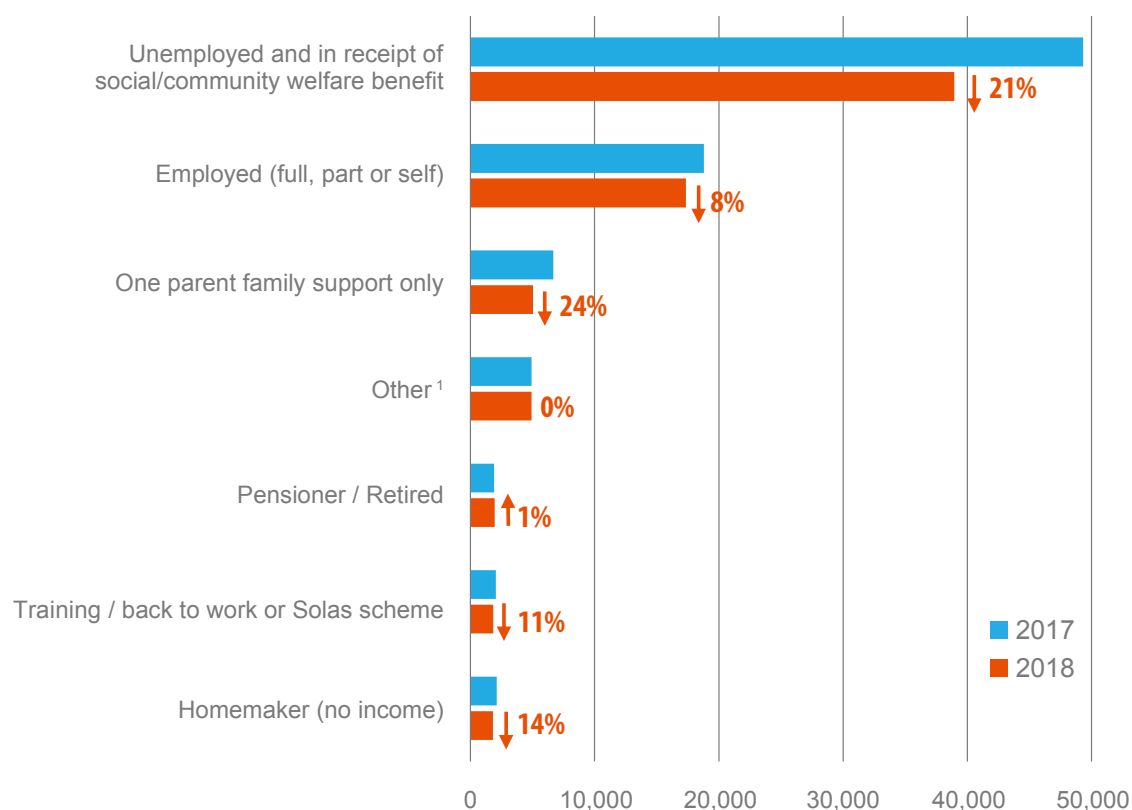
The majority (74.6%) of those qualified for social housing support are Irish citizens; 25.4% were non-Irish nationals, with the main applicant from an EU/EAA country in most of these households (see Table 2.9).

**Figure 2.1: Age Profile of Households (Main Applicant)**



**Table 2.1: Age Profile of Households (Main Applicant)**

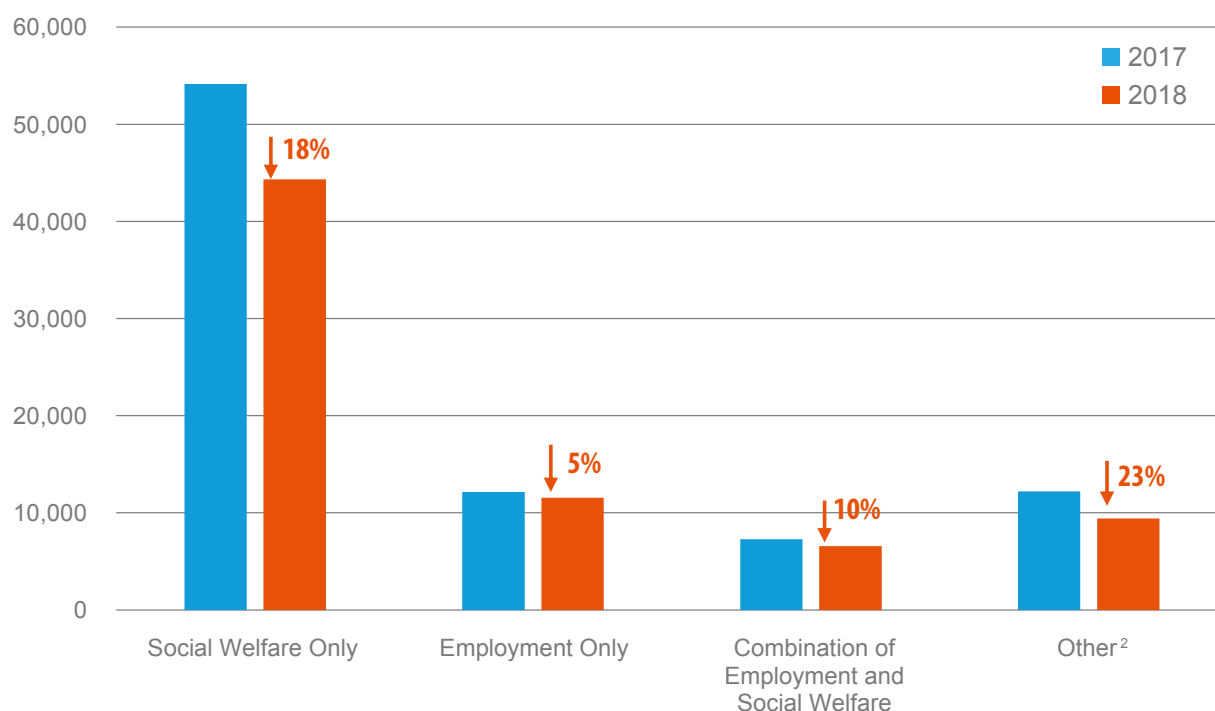
Age Group	2017		2018		Change 2017/2018	
	No. of HH	%	No. of HH	%	No. of HH	%
Less than 25 years old	6,300	7.3	5,444	7.6	-856	-13.6
25-29 years old	12,702	14.8	10,072	14.0	-2,630	-20.7
30-39 years old	28,485	33.2	23,105	32.2	-5,380	-18.9
40-49 years old	20,381	23.8	16,992	23.6	-3,389	-16.6
50-59 years old	11,268	13.1	10,006	13.9	-1,262	-11.2
60-69 years old	5,031	5.9	4,676	6.5	-355	-7.1
70 years old or more	1,632	1.9	1,563	2.2	-69	-4.2
<b>TOTAL</b>	<b>85,799</b>	<b>100.0</b>	<b>71,858</b>	<b>100.0</b>	<b>-13,941</b>	<b>-16.2</b>

**Figure 2.2: Employment Status (Main Applicant)****Table 2.2: Employment Status (Main Applicant)**

Employment Status	2017		2018		Change 2017/2018	
	No. of HH	%	No. of HH	%	No. of HH	%
Unemployed and in receipt of social welfare benefit	49,318	57.5	38,948	54.2	-10,370	-21.0
Employed (full, part or self)	18,798	21.9	17,357	24.2	-1,441	-7.7
One parent family support only	6,663	7.8	5,043	7.0	-1,620	-24.3
Other <sup>1</sup>	4,924	5.7	4,915	6.8	-9	-0.2
Pensioner / Retired	1,919	2.2	1,945	2.7	26	1.4
Training / back-to-work or Solas scheme	2,048	2.4	1,828	2.5	-220	-10.7
Homemaker (no income)	2,129	2.5	1,822	2.5	-307	-14.4
<b>TOTAL</b>	<b>85,799</b>	<b>100.0</b>	<b>71,858</b>	<b>100.0</b>	<b>-13,941</b>	<b>-16.2</b>

1. Other includes children/students in full-time education.

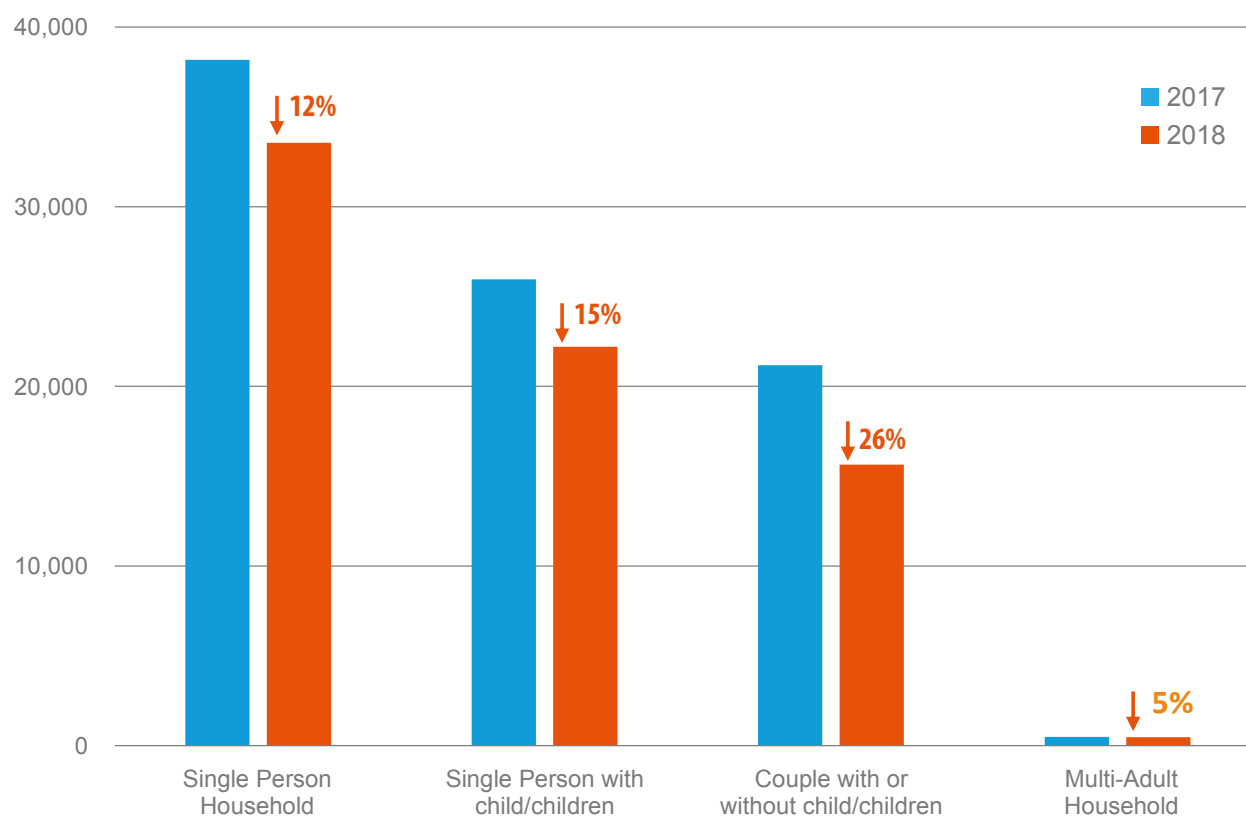
**Figure 2.3: Sources of Household Income**



**Table 2.3: Sources of Household Income**

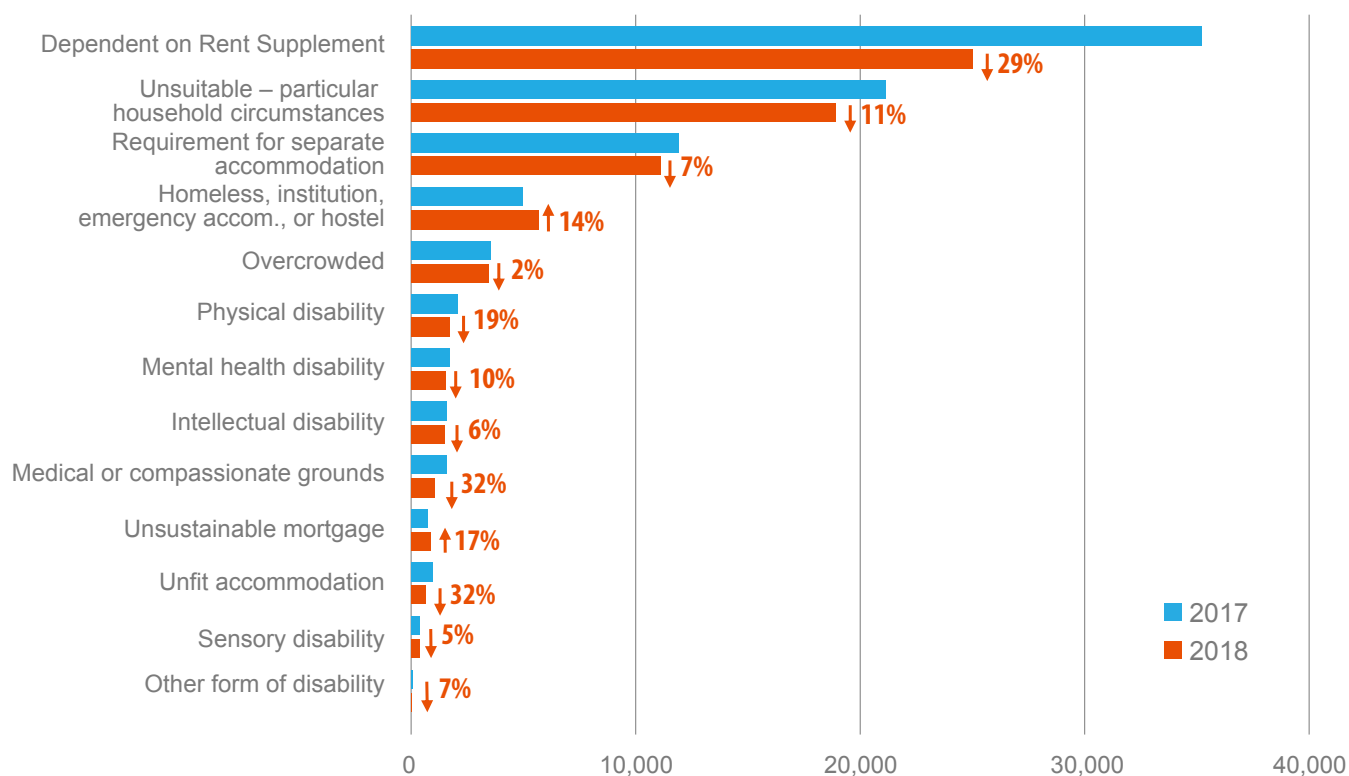
Source of Household Income	2017		2018		Change 2017/2018	
	No. of HH	%	No. of HH	%	No. of HH	%
Social welfare only	54,143	63.1	44,310	61.7	-9,833	-18.2
Employment only	12,151	14.2	11,551	16.1	-600	-4.9
Combination of employment & social welfare	7,287	8.5	6,589	9.2	-698	-9.6
Other <sup>2</sup>	12,218	14.2	9,408	13.1	-2,810	-23.0
<b>TOTAL</b>	<b>85,799</b>	<b>100.0</b>	<b>71,858</b>	<b>100.0</b>	<b>-13,941</b>	<b>-16.2</b>

2. Other includes homemaker, pension only, no income, maintenance only and other combinations.

**Figure 2.4: Household Composition****Table 2.4: Household Composition**

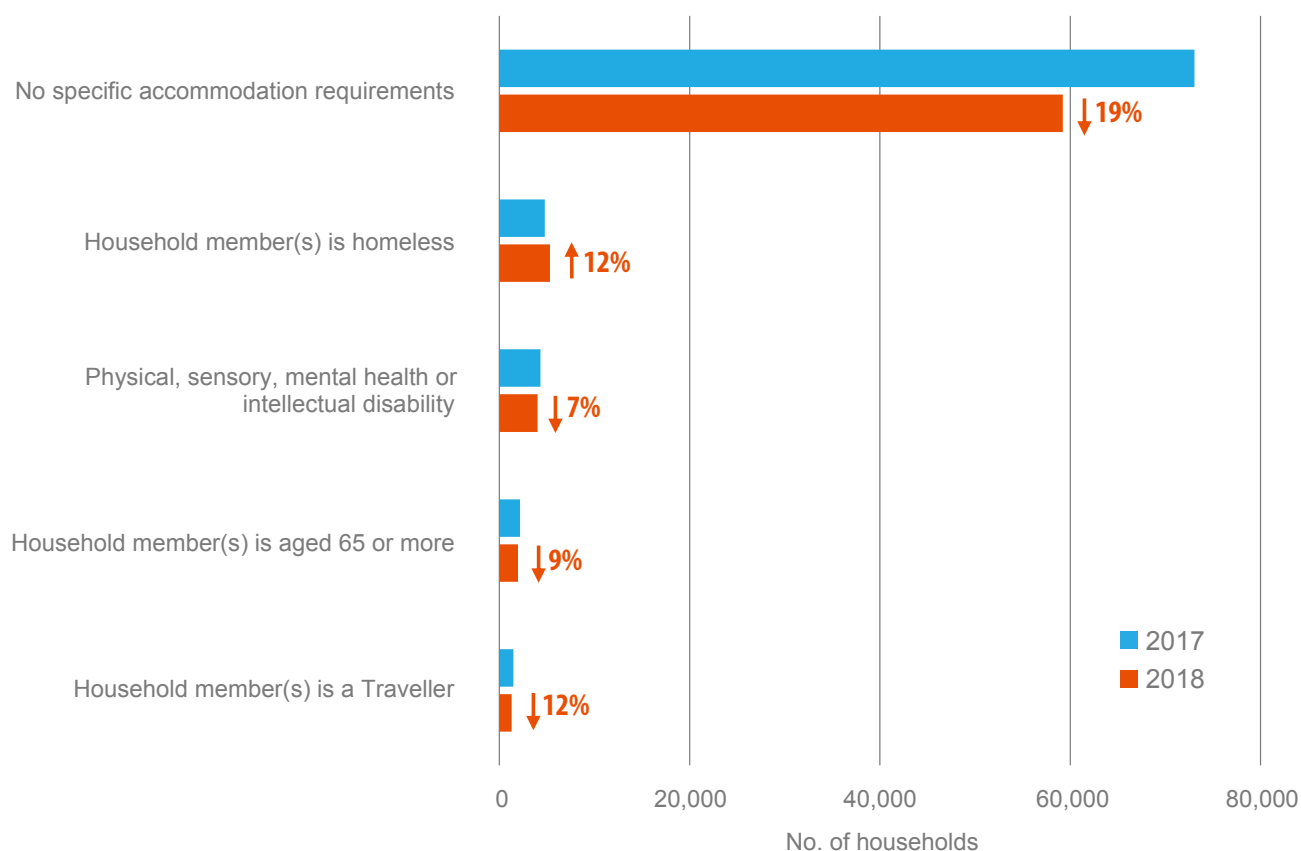
Household Composition	2017		2018		Change 2017/2018	
	No. of HH	%	No. of HH	%	No. of HH	%
Single Person Household	38,170	44.5	33,556	46.7	-4,614	-12.1
Single Person with child/children	25,963	30.3	22,195	30.9	-3,768	-14.5
Couple with or without child/children	21,176	24.7	15,643	21.8	-5,533	-26.1
Multi-Adult Household	490	0.6	464	0.6	-26	-5.3
<b>TOTAL</b>	<b>85,799</b>	<b>100.0</b>	<b>71,858</b>	<b>100.0</b>	<b>-13,941</b>	<b>-16.2</b>

**Figure 2.5: Main Need for Social Housing Support**



**Table 2.5: Main Need for Social Housing Support**

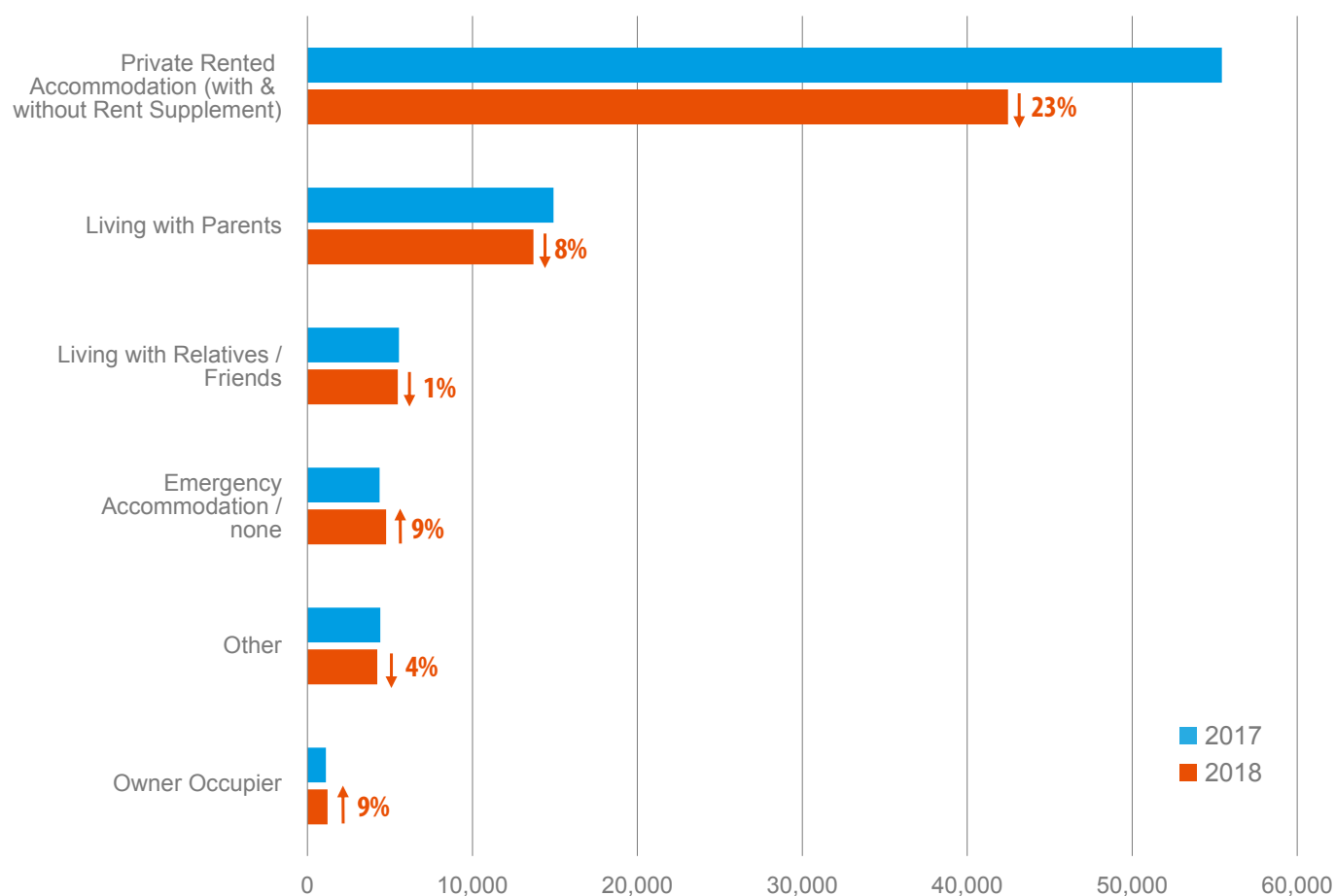
Main Need for Social Housing Support	2017		2018		Change 2017/2018	
	No. of HH	%	No. of HH	%	No. of HH	%
Dependent on Rent Supplement	35,204	41.0	25,023	34.8	-10,181	-28.9
Unsuitable accommodation – particular household circumstances	21,130	24.6	18,920	26.3	-2,210	-10.5
Requirement for separate accommodation	11,914	13.9	11,108	15.5	-806	-6.8
Homeless, institution, emergency accommodation or hostel	4,977	5.8	5,663	7.9	686	13.8
Overcrowded	3,544	4.1	3,465	4.8	-79	-2.2
Physical disability	2,084	2.4	1,696	2.4	-388	-18.6
Mental health disability	1,691	2.0	1,522	2.1	-169	-10.0
Intellectual disability	1,571	1.8	1,474	2.1	-97	-6.2
Medical or compassionate grounds	1,564	1.8	1,063	1.5	-501	-32.0
Unsustainable mortgage	746	0.9	873	1.2	127	17.0
Unfit accommodation	948	1.1	648	0.9	-300	-31.6
Sensory disability	381	0.4	361	0.5	-20	-5.2
Other form of disability	45	0.1	42	0.1	-3	-6.7
<b>TOTAL</b>	<b>85,799</b>	<b>100.0</b>	<b>71,858</b>	<b>100.0</b>	<b>-13,941</b>	<b>-16.2</b>

**Figure 2.6: Breakdown of Specific Accommodation Requirements****Table 2.6: Breakdown of Specific Accommodation Requirements**

Specific accommodation requirements	2017		2018		Change 2017/2018	
	No. of HH	%	No. of HH	%	No. of HH	%
No specific accommodation requirements	73,072	85.2	59,230	82.4	-13,842	-18.9
Household member(s) is homeless	4,765	5.6	5,329	7.4	564	11.8
Physical, sensory, mental or intellectual impairment	4,326	5.0	4,037	5.6	-289	-6.7
Household member(s) is aged 65 years or more	2,164	2.5	1,967	2.7	-197	-9.1
Household member(s) is a Traveller	1,472	1.7	1,295	1.8	-177	-12.0
<b>TOTAL</b>	<b>85,799</b>	<b>100.0</b>	<b>71,858</b>	<b>100.0</b>	<b>-13,941</b>	<b>-16.2</b>

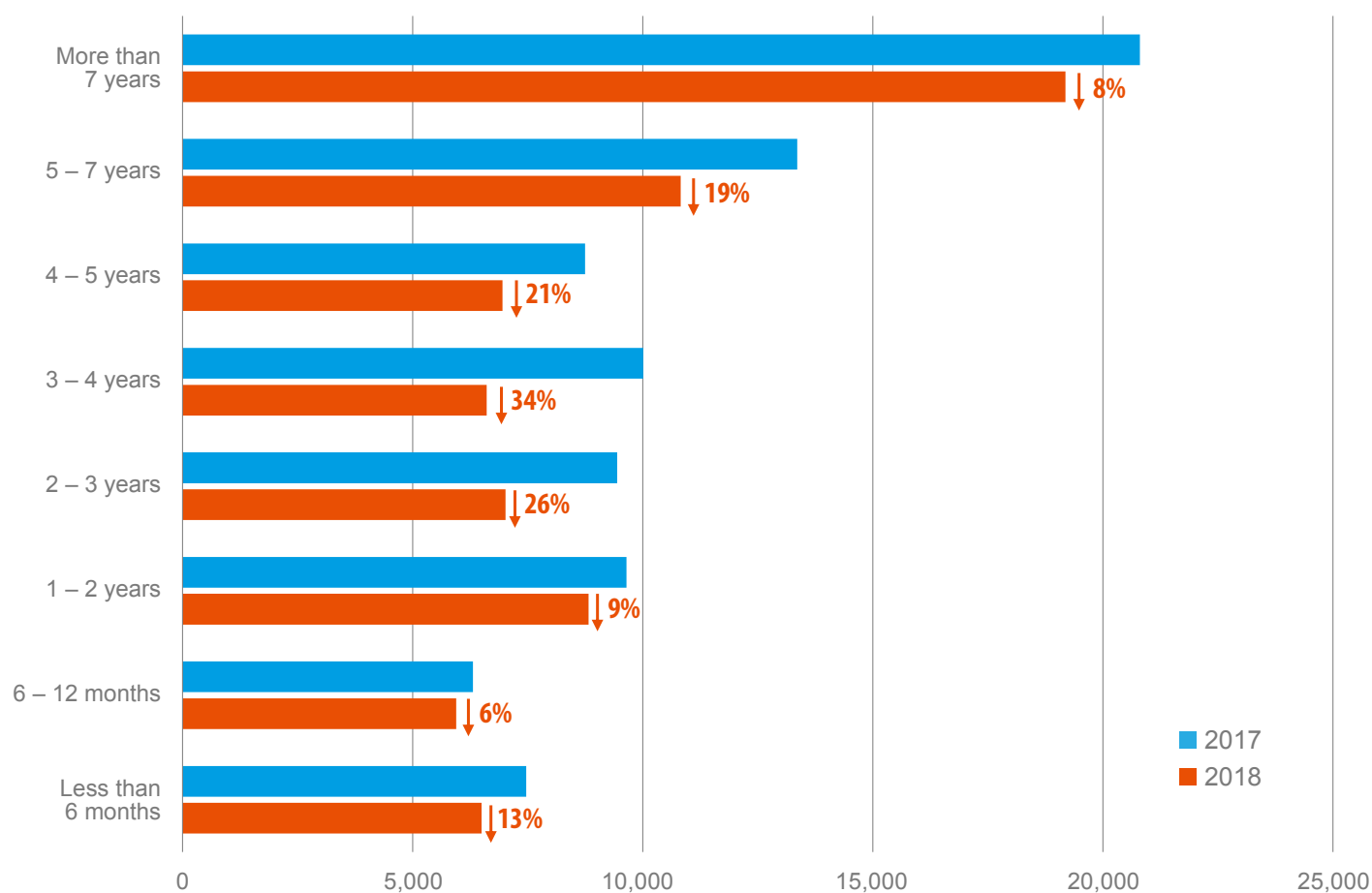


**Figure 2.7: Breakdown of the Current Tenure**



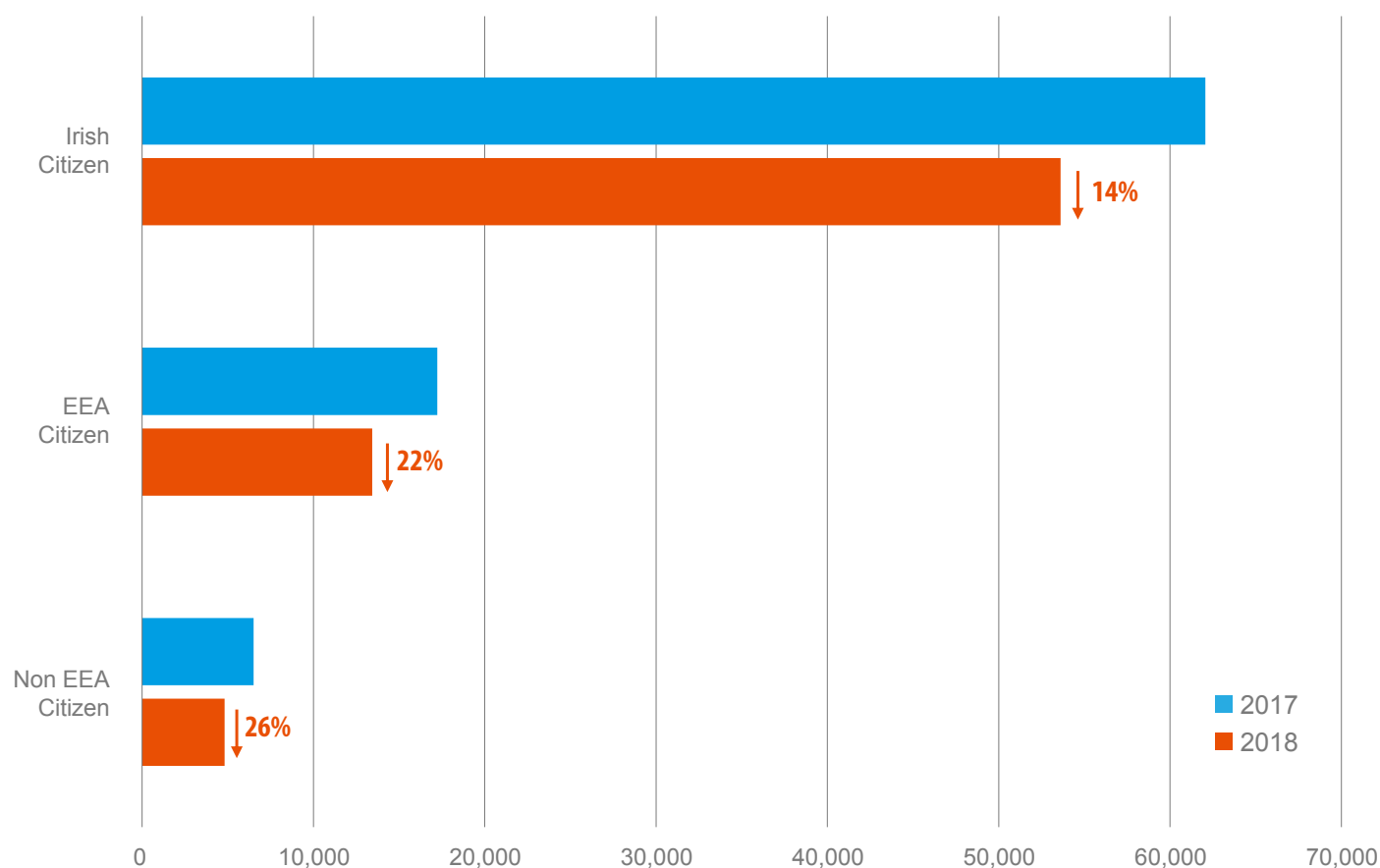
**Table 2.7: Breakdown of the Current Tenure**

Breakdown of the Current Tenure	2017		2018		Change 2017/2018	
	No. of HH	%	No. of HH	%	No. of HH	%
Private rented (with and without rent supplement)	55,426	64.6	42,467	59.1	-12,959	-23.4
Living with parents	14,917	17.4	13,694	19.1	-1,223	-8.2
Living with relatives / friends	5,547	6.5	5,476	7.6	-71	-1.3
Emergency Accommodation / none	4,378	5.1	4,775	6.6	397	9.1
Other	4,412	5.1	4,230	5.9	-182	-4.1
Owner occupier	1,119	1.3	1,216	1.7	97	8.7
<b>TOTAL</b>	<b>85,799</b>	<b>100.0</b>	<b>71,858</b>	<b>100.0</b>	<b>-13,941</b>	<b>-16.2</b>

**Figure 2.8: Length of Time on the Record of Qualified Households (the Waiting List)****Table 2.8: Length of Time on the Record of Qualified Households (the Waiting List)**

Length of time on record	2017		2018		Change 2017/2018	
	No. of HH	%	No. of HH	%	No. of HH	%
Less than 6 months	7,470	8.7	6,496	9.0	-974	-13.0
6 - 12 months	6,310	7.4	5,947	8.3	-363	-5.8
1 - 2 years	9,647	11.2	8,821	12.3	-826	-8.6
2 - 3 years	9,447	11.0	7,020	9.8	-2,427	-25.7
3 - 4 years	10,013	11.7	6,609	9.2	-3,404	-34.0
4 - 5 years	8,749	10.2	6,953	9.7	-1,796	-20.5
5 - 7 years	13,360	15.6	10,827	15.1	-2,533	-19.0
More than 7 years	20,803	24.2	19,185	26.7	-1,618	-7.8
<b>TOTAL</b>	<b>85,799</b>	<b>100.0</b>	<b>71,858</b>	<b>100.0</b>	<b>-13,941</b>	<b>-16.2</b>

**Figure 2.9: Nationality (Main Applicant)**



**Table 2.9: Nationality (Main Applicant)**

Nationality	2017		2018		Change 2017/2018	
	No. of HH	%	No. of HH	%	No. of HH	%
Irish Citizen	62,062	72.3	53,611	74.6	-8,451	-13.6
EEA Citizen	17,228	20.1	13,432	18.7	-3,796	-22.0
Non EEA Citizen	6,509	7.6	4,815	6.7	-1,694	-26.0
Of which:						
<i>Permission to remain in the State</i>	5,793	6.8	4,228	5.9	-1,565	-27.0
<i>Refugee</i>	607	0.7	484	0.7	-123	-20.3
<i>Subsidiary protection status</i>	109	0.1	103	0.1	-6	-5.5
<b>TOTAL</b>	<b>85,799</b>	<b>100.0</b>	<b>71,858</b>	<b>100.0</b>	<b>-13,941</b>	<b>-16.2</b>



# Appendix One

## Breakdown of tables by Local Authority



**Table A1.1: Age Profile of Households (Main Applicant) Qualified for Social Housing Support by Local Authority**

Local authority/year	Less than 25 years	25-29 years	30-39 years	40-49 years	50-59 years	60-69 years	70 years old or more	TOTAL
<b>Carlow</b>								
2018	66	91	125	114	67	30	6	499
2017	84	119	175	145	88	31	9	651
<b>Cavan</b>								
2018	89	108	209	164	106	41	20	737
2017	79	96	211	159	94	46	20	705
<b>Clare</b>								
2018	107	150	274	218	131	80	44	1,004
2017	175	241	534	481	291	169	61	1,952
<b>Cork City</b>								
2018	251	468	1,069	739	401	149	41	3,118
2017	335	703	1,552	1,025	533	169	56	4,373
<b>Cork County</b>								
2018	200	408	1,142	828	544	292	95	3,509
2017	236	577	1,510	1,089	706	360	113	4,591
<b>Donegal</b>								
2018	101	103	238	162	111	62	34	811
2017	101	124	283	177	119	66	33	903
<b>Dublin City</b>								
2018	1,211	2,435	5,401	3,912	2,271	987	297	16,514
2017	1,409	3,100	6,421	4,579	2,441	979	291	19,220
<b>Dún Laoghaire-Rathdown</b>								
2018	232	407	883	704	371	183	63	2,843
2017	242	452	1,058	823	462	192	78	3,307
<b>Fingal</b>								
2018	347	862	2,526	1,959	844	343	112	6,993
2017	369	1,010	2,661	2,009	806	321	95	7,271
<b>Galway City</b>								
2018	103	197	549	502	251	113	13	1,728
2017	133	271	776	600	300	128	11	2,219
<b>Galway County</b>								
2018	98	206	501	444	312	193	65	1,819
2017	115	236	562	476	322	185	54	1,950
<b>Kerry</b>								
2018	152	379	874	707	466	233	99	2,910
2017	212	423	1,029	766	484	220	83	3,217
<b>Kildare</b>								
2018	226	467	1,298	1,031	562	270	108	3,962
2017	244	684	1,800	1,315	638	294	128	5,103
<b>Kilkenny</b>								
2018	84	124	294	240	158	51	17	968
2017	90	183	396	268	200	60	33	1,230
<b>Laois</b>								
2018	67	154	332	235	158	61	17	1,024
2017	104	193	474	300	184	68	19	1,342
<b>Leitrim</b>								
2018	16	36	73	79	58	27	13	302
2017	27	44	74	82	63	25	12	327

Local authority/year	Less than 25 years	25-29 years	30-39 years	40-49 years	50-59 years	60-69 years	70 years old or more	TOTAL
<b>Limerick City &amp; County</b>								
2018	308	398	761	552	297	150	51	2,517
2017	309	455	920	659	315	153	59	2,870
<b>Longford</b>								
2018	53	71	158	120	85	45	10	542
2017	64	85	202	150	95	50	9	655
<b>Louth</b>								
2018	147	217	469	332	209	132	35	1,541
2017	141	330	772	525	282	165	34	2,249
<b>Mayo</b>								
2018	84	176	309	273	187	102	44	1,175
2017	77	171	325	307	207	93	42	1,222
<b>Meath</b>								
2018	117	281	686	440	273	129	40	1,966
2017	159	335	858	598	301	157	45	2,453
<b>Monaghan</b>								
2018	51	75	147	102	94	25	11	505
2017	39	61	145	119	75	25	12	476
<b>Offaly</b>								
2018	68	102	180	135	101	54	17	657
2017	77	146	252	203	142	77	20	917
<b>Roscommon</b>								
2018	30	42	98	73	66	42	18	369
2017	37	70	154	128	89	38	22	538
<b>Sligo</b>								
2018	37	72	111	92	72	46	12	442
2017	46	90	161	123	107	55	29	611
<b>South Dublin</b>								
2018	451	828	1,813	994	503	199	58	4,846
2017	503	1,095	2,244	1,185	558	235	49	5,869
<b>Tipperary</b>								
2018	164	183	348	214	180	85	27	1,201
2017	163	205	380	242	182	74	31	1,277
<b>Waterford City &amp; County</b>								
2018	131	198	360	209	139	52	28	1,117
2017	146	233	474	305	174	85	27	1,444
<b>Westmeath</b>								
2018	134	187	409	392	276	143	44	1,585
2017	148	183	464	427	281	133	43	1,679
<b>Wexford</b>								
2018	168	300	658	473	332	180	66	2,177
2017	258	387	755	544	368	199	66	2,577
<b>Wicklow</b>								
2018	151	347	810	553	381	177	58	2,477
2017	178	400	863	572	361	179	48	2,601
<b>TOTAL 2018</b>	<b>5,444</b>	<b>10,072</b>	<b>23,105</b>	<b>16,992</b>	<b>10,006</b>	<b>4,676</b>	<b>1,563</b>	<b>71,858</b>
<b>TOTAL 2017</b>	<b>6,300</b>	<b>12,702</b>	<b>28,485</b>	<b>20,381</b>	<b>11,268</b>	<b>5,031</b>	<b>1,632</b>	<b>85,799</b>

**Table A1.2: Employment Status of Main Applicant Qualified for Social Housing Support by Local Authority**

Local authority/ year	Unemployed, in receipt of social welfare	Employed	Back-to- work / Solas scheme <sup>3</sup>	Homemaker (no income)	One parent family supports	Other	Retired	TOTAL
<b>Carlow</b>								
2018	295	94	18	44	22	20	6	499
2017	388	109	21	67	38	22	6	651
<b>Cavan</b>								
2018	516	131	15	26	19	5	25	737
2017	501	105	15	24	23	19	18	705
<b>Clare</b>								
2018	622	163	20	20	43	84	52	1,004
2017	1,265	314	40	50	66	138	79	1,952
<b>Cork City</b>								
2018	1,256	1,033	76	76	249	368	60	3,118
2017	1,859	1,309	96	105	361	582	61	4,373
<b>Cork County</b>								
2018	1,902	986	95	99	107	233	87	3,509
2017	2,582	1,229	119	117	178	251	115	4,591
<b>Donegal</b>								
2018	503	164	26	21	30	29	38	811
2017	557	165	32	15	43	52	39	903
<b>Dublin City</b>								
2018	8,720	4,862	376	348	1,629	120	459	16,514
2017	10,912	4,815	406	382	2,140	128	437	19,220
<b>Dún Laoghaire-Rathdown</b>								
2018	428	559	1	1	72	1,744	38	2,843
2017	1,176	916	0	0	0	1,215		3,307
<b>Fingal</b>								
2018	4,312	1,177	260	0	998	57	189	6,993
2017	4,517	1,222	221	0	1,059	78	174	7,271
<b>Galway City</b>								
2018	785	475	34	88	78	241	27	1,728
2017	1,128	527	45	112	121	261	25	2,219
<b>Galway County</b>								
2018	1,071	290	80	75	74	142	87	1,819
2017	1,262	273	77	71	105	89	73	1,950
<b>Kerry</b>								
2018	1,726	684	94	51	102	156	97	2,910
2017	2,038	693	99	52	128	135	72	3,217
<b>Kildare</b>								
2018	2,281	986	109	123	195	140	128	3,962
2017	3,017	1,044	145	141	415	202	139	5,103
<b>Kilkenny</b>								
2018	508	265	18	30	27	109	11	968
2017	723	248	22	35	39	141	22	1,230
<b>Laois</b>								
2018	682	200	24	27	21	55	15	1,024
2017	924	222	28	48	34	69	17	1,342
<b>Leitrim</b>								
2018	224	33	9	8	2	14	12	302
2017	242	32	12	9	2	19	11	327

3. Back to work / Solas Scheme category corresponds to "Training / back-to-work or Solas scheme" reference in main table.



Local authority/ year	Unemployed, in receipt of social welfare	Employed	Back-to- work / Solas scheme <sup>3</sup>	Homemaker (no income)	One parent family supports	Other	Retired	TOTAL
<b>Limerick City &amp; County</b>								
2018	1,511	420	84	44	178	219	61	2,517
2017	1,843	432	97	51	205	189	53	2,870
<b>Longford</b>								
2018	367	88	25	40	4	8	10	542
2017	453	93	30	49	12	10	8	655
<b>Louth</b>								
2018	812	398	31	82	48	121	49	1,541
2017	1,216	507	50	140	113	172	51	2,249
<b>Mayo</b>								
2018	687	198	25	41	67	103	54	1,175
2017	711	181	28	44	77	131	50	1,222
<b>Meath</b>								
2018	1,018	601	40	68	84	97	58	1,966
2017	1,405	642	57	87	118	75	69	2,453
<b>Monaghan</b>								
2018	284	143	19	14	11	21	13	505
2017	280	134	10	8	14	18	12	476
<b>Offaly</b>								
2018	429	142	9	26	9	25	17	657
2017	659	133	19	26	28	29	23	917
<b>Roscommon</b>								
2018	244	55	6	14	9	20	21	369
2017	336	70	11	11	32	52	26	538
<b>Sligo</b>								
2018	274	66	17	12	7	58	8	442
2017	418	71	17	16	8	62	19	611
<b>South Dublin</b>								
2018	2,603	1,376	75	123	533	64	72	4,846
2017	3,320	1,435	96	125	770	70	53	5,869
<b>Tipperary</b>								
2018	843	217	38	33	18	39	13	1,201
2017	936	205	35	32	17	34	18	1,277
<b>Waterford City &amp; County</b>								
2018	629	300	29	12	59	63	25	1,117
2017	850	374	35	16	76	68	25	1,444
<b>Westmeath</b>								
2018	937	279	60	63	57	123	66	1,585
2017	1,002	307	60	48	71	126	65	1,679
<b>Wexford</b>								
2018	1,071	320	61	142	203	299	81	2,177
2017	1,282	379	72	172	244	335	93	2,577
<b>Wicklow</b>								
2018	1,408	652	54	71	88	138	66	2,477
2017	1,516	612	53	76	126	152	66	2,601
<b>TOTAL 2018</b>	<b>38,948</b>	<b>17,357</b>	<b>1,828</b>	<b>1,822</b>	<b>5,043</b>	<b>4,915</b>	<b>1,945</b>	<b>71,858</b>
<b>TOTAL 2017</b>	<b>49,318</b>	<b>18,798</b>	<b>2,048</b>	<b>2,129</b>	<b>6,663</b>	<b>4,924</b>	<b>1,919</b>	<b>85,799</b>

**Table A1.3: Source of Income of Main Applicant Qualified for Social Housing Support by Local Authority**

Local authority/ year	Social Welfare Only	Employment Only	Employment & Social Welfare	Other	TOTAL
<b>Carlow</b>					
2018	302	50	48	99	499
2017	406	61	51	133	651
<b>Cavan</b>					
2018	508	60	63	106	737
2017	515	60	52	78	705
<b>Clare</b>					
2018	734	108	82	80	1,004
2017	1,425	213	159	155	1,952
<b>Cork City</b>					
2018	1,731	701	340	346	3,118
2017	2,609	863	470	431	4,373
<b>Cork County</b>					
2018	1,961	572	409	567	3,509
2017	2,715	709	523	644	4,591
<b>Donegal</b>					
2018	548	63	108	92	811
2017	622	65	124	92	903
<b>Dublin City</b>					
2018	9,708	2,976	1,592	2,238	16,514
2017	12,213	2,902	1,665	2,440	19,220
<b>Dún Laoghaire-Rathdown</b>					
2018	1,043	792	141	867	2,843
2017	53	505	38	2,711	3,307
<b>Fingal</b>					
2018	4,816	1,109	411	657	6,993
2017	5,142	1,133	416	580	7,271
<b>Galway City</b>					
2018	1,004	313	177	234	1,728
2017	1,360	329	244	286	2,219
<b>Galway County</b>					
2018	1,232	153	186	248	1,819
2017	1,341	168	176	265	1,950
<b>Kerry</b>					
2018	1,921	461	256	272	2,910
2017	2,145	470	294	308	3,217
<b>Kildare</b>					
2018	2,530	701	326	405	3,962
2017	3,499	798	354	452	5,103
<b>Kilkenny</b>					
2018	584	187	102	95	968
2017	819	205	107	99	1,230
<b>Laois</b>					
2018	672	109	102	141	1,024
2017	889	119	130	204	1,342
<b>Leitrim</b>					
2018	230	17	27	28	302
2017	255	16	32	24	327

Local authority/ year	Social Welfare Only	Employment Only	Employment & Social Welfare	Other	TOTAL
<b>Limerick City &amp; County</b>					
2018	1,792	276	222	227	2,517
2017	2,123	305	213	229	2,870
<b>Longford</b>					
2018	377	62	41	62	542
2017	464	69	47	75	655
<b>Louth</b>					
2018	934	222	153	232	1,541
2017	1,418	293	219	319	2,249
<b>Mayo</b>					
2018	833	78	128	136	1,175
2017	889	74	127	132	1,222
<b>Meath</b>					
2018	1,141	376	213	236	1,966
2017	1,519	406	243	285	2,453
<b>Monaghan</b>					
2018	299	102	54	50	505
2017	288	103	44	41	476
<b>Offaly</b>					
2018	443	74	61	79	657
2017	688	71	82	76	917
<b>Roscommon</b>					
2018	279	16	43	31	369
2017	411	31	55	41	538
<b>Sligo</b>					
2018	314	39	47	42	442
2017	490	40	42	39	611
<b>South Dublin</b>					
2018	2,697	931	419	799	4,846
2017	3,448	1,049	462	910	5,869
<b>Tipperary</b>					
2018	814	124	117	146	1,201
2017	903	130	107	137	1,277
<b>Waterford City &amp; County</b>					
2018	732	164	120	101	1,117
2017	934	221	160	129	1,444
<b>Westmeath</b>					
2018	1,158	146	167	114	1,585
2017	1,204	172	178	125	1,679
<b>Wexford</b>					
2018	1,481	176	166	354	2,177
2017	1,737	206	197	437	2,577
<b>Wicklow</b>					
2018	1,492	393	268	324	2,477
2017	1,619	365	276	341	2,601
<b>TOTAL 2018</b>	<b>44,310</b>	<b>11,551</b>	<b>6,589</b>	<b>9,408</b>	<b>71,858</b>
<b>TOTAL 2017</b>	<b>54,143</b>	<b>12,151</b>	<b>7,287</b>	<b>12,218</b>	<b>85,799</b>

**Table A1.4: Household Composition of Those Qualified for Social Housing Support by Local Authority**

Local authority/ year	Single Person Household	Single Person with child/ children	Couple with or without child/children	Multi-Adult Household	TOTAL
<b>Carlow</b>					
2018	219	174	103	3	499
2017	260	220	168	3	651
<b>Cavan</b>					
2018	302	214	215	6	737
2017	300	177	222	6	705
<b>Clare</b>					
2018	541	282	171	10	1,004
2017	934	544	447	27	1,952
<b>Cork City</b>					
2018	1,477	883	742	16	3,118
2017	2,041	1,187	1,114	31	4,373
<b>Cork County</b>					
2018	1,557	1,114	824	14	3,509
2017	2,000	1,423	1,142	26	4,591
<b>Donegal</b>					
2018	456	219	132	4	811
2017	496	246	154	7	903
<b>Dublin City</b>					
2018	8,981	5,356	2,166	11	16,514
2017	9,976	5,526	3,703	15	19,220
<b>Dún Laoghaire-Rathdown</b>					
2018	1,449	841	545	8	2,843
2017	1,659	992	650	6	3,307
<b>Fingal</b>					
2018	2,083	2,557	2,233	120	6,993
2017	1,857	2,791	2,591	32	7,271
<b>Galway City</b>					
2018	924	400	399	5	1,728
2017	1,125	527	559	8	2,219
<b>Galway County</b>					
2018	897	490	427	5	1,819
2017	870	542	533	5	1,950
<b>Kerry</b>					
2018	1,502	711	674	23	2,910
2017	1,544	852	798	23	3,217
<b>Kildare</b>					
2018	1,808	1,013	1,123	18	3,962
2017	2,162	1,394	1,529	18	5,103
<b>Kilkenny</b>					
2018	503	254	202	9	968
2017	644	303	273	10	1,230
<b>Laois</b>					
2018	383	326	306	9	1,024
2017	448	449	432	13	1,342
<b>Leitrim</b>					
2018	176	53	72	1	302
2017	179	57	90	1	327

Local authority/ year	Single Person Household	Single Person with child/ children	Couple with or without child/children	Multi-Adult Household	TOTAL
<b>Limerick City &amp; County</b>					
2018	1,272	737	483	25	2,517
2017	1,450	795	607	18	2,870
<b>Longford</b>					
2018	230	144	163	5	542
2017	266	162	223	4	655
<b>Louth</b>					
2018	782	431	324	4	1,541
2017	1,117	596	528	8	2,249
<b>Mayo</b>					
2018	617	300	246	12	1,175
2017	624	313	271	14	1,222
<b>Meath</b>					
2018	810	614	522	20	1,966
2017	879	812	710	52	2,453
<b>Monaghan</b>					
2018	258	132	112	3	505
2017	245	133	94	4	476
<b>Offaly</b>					
2018	285	188	184		657
2017	389	248	278	2	917
<b>Roscommon</b>					
2018	205	62	99	3	369
2017	257	119	161	1	538
<b>Sligo</b>					
2018	269	109	60	4	442
2017	400	124	84	3	611
<b>South Dublin</b>					
2018	1,685	1,947	1,133	81	4,846
2017	1,839	2,399	1,532	99	5,869
<b>Tipperary</b>					
2018	586	377	235	3	1,201
2017	635	394	245	3	1,277
<b>Waterford City &amp; County</b>					
2018	572	337	196	12	1,117
2017	722	441	263	18	1,444
<b>Westmeath</b>					
2018	785	365	431	4	1,585
2017	774	422	481	2	1,679
<b>Wexford</b>					
2018	943	734	488	12	2,177
2017	1,074	872	619	12	2,577
<b>Wicklow</b>					
2018	999	831	633	14	2,477
2017	1,004	903	675	19	2,601
<b>TOTAL 2018</b>	<b>33,556</b>	<b>22,195</b>	<b>15,643</b>	<b>464</b>	<b>71,858</b>
<b>TOTAL 2017</b>	<b>38,170</b>	<b>25,963</b>	<b>21,176</b>	<b>490</b>	<b>85,799</b>

**Table A1.5: Main Need for Support for Those Households Qualified for Social Housing by Local Authority**

Key	Basis of Need													TOTAL
<b>A</b>	Dependent on Rent Supplement													
<b>B</b>	Unsuitable accommodation – household circumstances													
<b>C</b>	Require separate accommodation													
<b>D</b>	Institution, emergency accommodation or hostel													
<b>E</b>	Disability – physical													
<b>F</b>	Disability – sensory													
<b>G</b>	Disability – mental health													
<b>H</b>	Disability - Other													
<b>I</b>	Disability – intellectual													
<b>J</b>	Exceptional medical needs or compassionate grounds													
<b>K</b>	Overcrowded accommodation													
<b>L</b>	Unfit accommodation													
<b>M</b>	Unsustainable mortgage													

	A	B	C	D	E	F	G	H	I	J	K	L	M	TOTAL
<b>Carlow</b>														
2018	79	124	100	24	32	10	30	0	22	5	40	12	21	499
2017	195	177	77	18	34	7	30	0	20	7	58	11	17	651
<b>Cavan</b>														
2018	77	410	120	1	15	0	7	0	5	20	30	17	35	737
2017	91	389	89	1	20	0	12	0	20	8	27	18	30	705
<b>Clare</b>														
2018	259	362	83	123	35	1	30	6	27	14	29	27	8	1,004
2017	808	658	103	49	61	5	66	6	33	32	53	69	9	1,952
<b>Cork City</b>														
2018	834	1,006	754	224	57	11	76	2	23	34	72	6	19	3,118
2017	1,513	1,337	932	213	75	9	93	0	31	48	85	9	28	4,373
<b>Cork County</b>														
2018	1,088	1,626	279	51	193	32	99	0	22	43	17	2	57	3,509
2017	1,778	1,936	252	83	225	38	112	0	29	50	27	6	55	4,591
<b>Donegal</b>														
2018	72	402	209	10	17	4	17	0	15	15	12	14	24	811
2017	190	351	210	11	19	4	18	0	11	19	20	30	20	903
<b>Dublin City</b>														
2018	5,309	3,333	3,696	2,381	128	39	33	2	41	21	1,360	128	43	16,514
2017	7,336	3,429	4,326	2,367	195	55	41	3	52	56	1,118	195	47	19,220
<b>Dún Laoghaire-Rathdown</b>														
2018	514	453	1,051	315	36	8	52	0	98	191	106	0	19	2,843
2017	669	605	900	331	52	8	76	1	117	397	0	132	19	3,307
<b>Fingal</b>														
2018	4,098	1,250	980	483	44	22	38	5	15	6	42	9	1	6,993
2017	4,696	1,181	777	364	37	20	37	3	23	1	124	8	0	7,271
<b>Galway City</b>														
2018	455	595	300	130	80	10	67	1	46	4	31	1	8	1,728
2017	717	754	361	103	95	10	75	2	43	6	45	1	7	2,219
<b>Galway County</b>														
2018	1,124	18	143	60	132	6	159	0	51	7	23	64	32	1,819
2017	1,159	20	97	49	214	10	204	1	64	12	32	73	15	1,950
<b>Kerry</b>														
2018	1,802	140	305	110	167	57	204	0	33	17	41	2	32	2,910
2017	2,070	219	287	54	182	56	217	0	41	19	43	8	21	3,217
<b>Kildare</b>														
2018	661	2,243	343	186	28	3	53	3	154	94	106	21	67	3,962
2017	1,281	2,433	626	196	35	1	32	3	98	124	161	28	85	5,103
<b>Kilkenny</b>														
2018	267	378	48	34	23	1	9	6	83	34	49	24	12	968
2017	406	462	58	45	19	1	13	6	81	43	47	40	9	1,230
<b>Laois</b>														
2018	700	139	64	16	13	2	17	1	21	0	11	6	34	1,024
2017	1,015	168	52	15	15	3	11	1	22	0	16	6	18	1,342

	A	B	C	D	E	F	G	H	I	J	K	L	M	TOTAL
<b>Leitrim</b>														
2018	102	48	31	0	10	10	29	0	14	48	0	3	7	302
2017	147	50	22	0	10	6	35	0	13	38	1	2	3	327
<b>Limerick City and County</b>														
2018	903	589	230	307	57	23	57	1	57	66	174	12	41	2,517
2017	1,429	488	249	236	36	17	45	1	63	102	163	20	21	2,870
<b>Longford</b>														
2018	221	181	64	9	11	1	9	2	2	16	7	7	12	542
2017	396	147	46	6	10	0	8	2	2	16	4	5	13	655
<b>Louth</b>														
2018	202	755	144	96	47	5	29	1	177	13	68	4	0	1,541
2017	540	1,086	155	33	99	8	40	1	196	29	53	6	3	2,249
<b>Mayo</b>														
2018	767	131	80	7	29	3	42	1	24	24	33	7	27	1,175
2017	816	128	84	2	45	4	39	1	32	30	28	2	11	1,222
<b>Meath</b>														
2018	584	599	315	33	58	35	39	0	37	46	104	45	71	1,966
2017	1,241	388	300	14	56	35	28	0	34	112	149	39	57	2,453
<b>Monaghan</b>														
2018	85	184	19	0	5	0	2	0	14	116	16	52	12	505
2017	120	95	25	0	5	0	3	1	7	138	21	54	7	476
<b>Offaly</b>														
2018	256	116	89	37	29	1	17	0	12	6	32	20	42	657
2017	456	191	91	37	36	2	13	0	10	5	36	13	27	917
<b>Roscommon</b>														
2018	198	51	11	6	15	0	23	0	23	4	12	7	19	369
2017	374	43	9	0	20	1	33	1	20	6	20	7	4	538
<b>Sligo</b>														
2018	26	136	89	55	4	2	16	0	85	4	6	6	13	442
2017	0	301	73	40	8	1	29	0	127	11	7	7	7	611
<b>South Dublin</b>														
2018	1,395	817	911	636	103	31	53	2	195	3	662	31	7	4,846
2017	2,213	1,034	988	435	110	31	42	2	184	8	793	19	10	5,869
<b>Tipperary</b>														
2018	314	407	139	35	52	6	67	2	15	56	33	26	49	1,201
2017	382	385	157	26	56	8	63	1	24	77	35	30	33	1,277
<b>Waterford City and County</b>														
2018	139	567	103	111	24	4	26	4	48	15	51	14	11	1,117
2017	250	714	150	82	33	4	35	5	53	15	54	9	40	1,444
<b>Westmeath</b>														
2018	661	582	70	79	29	4	24	2	10	17	52	18	37	1,585
2017	726	636	58	58	28	5	24	1	9	20	54	20	40	1,679
<b>Wexford</b>														
2018	1,129	211	218	38	196	21	156	0	67	14	62	31	34	2,177
2017	1,366	255	242	52	227	23	169	0	76	10	76	42	39	2,577
<b>Wicklow</b>														
2018	702	1,067	120	66	27	9	42	1	38	110	184	32	79	2,477
2017	824	1,070	118	57	27	9	48	3	36	125	194	39	51	2,601
<b>TOTAL 2018</b>	<b>25,023</b>	<b>18,920</b>	<b>11,108</b>	<b>5,663</b>	<b>1,696</b>	<b>361</b>	<b>1,522</b>	<b>42</b>	<b>1,474</b>	<b>1,063</b>	<b>3,465</b>	<b>648</b>	<b>873</b>	<b>71,858</b>
<b>TOTAL 2017</b>	<b>35,204</b>	<b>21,130</b>	<b>11,914</b>	<b>4,977</b>	<b>2,084</b>	<b>381</b>	<b>1,691</b>	<b>45</b>	<b>1,571</b>	<b>1,564</b>	<b>3,544</b>	<b>948</b>	<b>746</b>	<b>85,799</b>

**Table A1.6: Breakdown of Accommodation Requirements of Those Qualified for Social Housing support by Local Authority**

Local authority/ year	General (no specific requirements)	Enduring physical, sensory, mental health or intellectual issue	Homeless	Traveller	Aged 65 years or more	TOTAL
<b>Carlow</b>						
2018	396	57	14	31	1	499
2017	558	38	13	38	4	651
<b>Cavan</b>						
2018	676	39	3	19	0	737
2017	659	45	1	0	0	705
<b>Clare</b>						
2018	847	75	36	21	25	1,004
2017	1,738	90	41	33	50	1,952
<b>Cork City</b>						
2018	2,662	159	231	27	39	3,118
2017	3,876	202	222	27	46	4,373
<b>Cork County</b>						
2018	3,283	139	40	38	9	3,509
2017	4,402	100	41	40	8	4,591
<b>Donegal</b>						
2018	766	25	4	1	15	811
2017	855	28	5	1	14	903
<b>Dublin City</b>						
2018	12,590	218	2,353	128	1,225	16,514
2017	15,150	304	2,331	153	1,282	19,220
<b>Dún Laoghaire-Rathdown</b>						
2018	2,559	19	237	5	23	2,843
2017	3,038	37	171	13	48	3,307
<b>Fingal</b>						
2018	6,095	67	559	160	112	6,993
2017	6,446	89	465	152	119	7,271
<b>Galway City</b>						
2018	1,349	179	120	43	37	1,728
2017	1,836	198	95	53	37	2,219
<b>Galway County</b>						
2018	1,483	155	32	97	52	1,819
2017	1,570	157	39	139	45	1,950
<b>Kerry</b>						
2018	2,244	472	75	96	23	2,910
2017	2,545	506	48	95	23	3,217
<b>Kildare</b>						
2018	3,492	222	164	34	50	3,962
2017	4,601	208	171	50	73	5,103
<b>Kilkenny</b>						
2018	820	107	30	8	3	968
2017	1,085	99	33	11	2	1,230
<b>Laois</b>						
2018	973	24	15	11	1	1,024
2017	1,291	26	10	13	2	1,342
<b>Leitrim</b>						
2018	177	97	4	13	11	302
2017	200	95	4	14	14	327



Local authority/ year	General (no specific requirements)	Enduring physical, sensory, mental health or intellectual issue	Homeless	Traveller	Aged 65 years or more	TOTAL
<b>Limerick City &amp; County</b>						
2018	1,872	184	325	113	23	2,517
2017	2,290	160	276	112	32	2,870
<b>Longford</b>						
2018	483	18	8	14	19	542
2017	612	19	5	18	1	655
<b>Louth</b>						
2018	1,207	191	88	42	13	1,541
2017	1,796	258	102	73	20	2,249
<b>Mayo</b>						
2018	1,029	51	4	75	16	1,175
2017	1,066	61	0	79	16	1,222
<b>Meath</b>						
2018	1,617	212	25	63	49	1,966
2017	2,114	165	21	78	75	2,453
<b>Monaghan</b>						
2018	478	23	1	1	2	505
2017	456	16	0	1	3	476
<b>Offaly</b>						
2018	574	46	9	17	11	657
2017	817	49	8	25	18	917
<b>Roscommon</b>						
2018	318	34	2	2	13	369
2017	473	47	1	5	12	538
<b>Sligo</b>						
2018	268	116	31	20	7	442
2017	386	164	26	24	11	611
<b>South Dublin</b>						
2018	3,723	417	608	38	60	4,846
2017	5,035	375	360	32	67	5,869
<b>Tipperary</b>						
2018	1,007	107	27	46	14	1,201
2017	1,061	132	23	48	13	1,277
<b>Waterford City &amp; County</b>						
2018	878	88	101	34	16	1,117
2017	1,203	116	72	31	22	1,444
<b>Westmeath</b>						
2018	1,407	77	73	15	13	1,585
2017	1,520	71	63	13	12	1,679
<b>Wexford</b>						
2018	1,742	305	29	49	52	2,177
2017	2,063	356	37	64	57	2,577
<b>Wicklow</b>						
2018	2,215	114	81	34	33	2,477
2017	2,330	115	81	37	38	2,601
<b>TOTAL 2018</b>	<b>59,230</b>	<b>4,037</b>	<b>5,329</b>	<b>1,295</b>	<b>1,967</b>	<b>71,858</b>
<b>TOTAL 2017</b>	<b>73,072</b>	<b>4,326</b>	<b>4,765</b>	<b>1,472</b>	<b>2,164</b>	<b>85,799</b>

**Table A1.7: Breakdown of the Current Tenure of Households Qualified for Social Housing Support by Local Authority**

Local authority/ year	Private rented accom with/ without RS	Living with parents	Living with relatives/ friends	Emergency accom/ none	Owner occupier	Other	TOTAL
<b>Carlow</b>							
2018	237	135	49	24	26	28	499
2017	387	133	55	21	23	32	651
<b>Cavan</b>							
2018	502	121	44	5	38	27	737
2017	494	96	32	2	38	43	705
<b>Clare</b>							
2018	434	249	107	95	19	100	1,004
2017	1,276	303	155	48	40	130	1,952
<b>Cork City</b>							
2018	1,906	678	226	130	24	154	3,118
2017	2,915	818	253	172	26	189	4,373
<b>Cork County</b>							
2018	2,462	558	219	51	86	133	3,509
2017	3,520	593	199	55	74	150	4,591
<b>Donegal</b>							
2018	407	217	95	16	52	24	811
2017	527	198	90	15	43	30	903
<b>Dublin City</b>							
2018	9,116	3,708	1,078	2,140	39	433	16,514
2017	11,027	4,615	1,020	2,281	42	235	19,220
<b>Dún Laoghaire-Rathdown</b>							
2018	1,011	442	270	198	11	911	2,843
2017	1,346	513	304	116	10	1,018	3,307
<b>Fingal</b>							
2018	5,324	777	377	455	19	41	6,993
2017	5,894	671	313	336	22	35	7,271
<b>Galway City</b>							
2018	1,259	198	108	102	16	45	1,728
2017	1,733	193	124	125	11	33	2,219
<b>Galway County</b>							
2018	1,253	240	116	39	63	108	1,819
2017	1,485	201	86	22	46	110	1,950
<b>Kerry</b>							
2018	2,154	389	172	88	74	33	2,910
2017	2,570	347	152	51	68	29	3,217
<b>Kildare</b>							
2018	2,158	734	435	167	97	371	3,962
2017	3,043	850	532	128	112	438	5,103
<b>Kilkenny</b>							
2018	401	217	127	47	26	150	968
2017	591	242	134	53	24	186	1,230
<b>Laois</b>							
2018	730	127	54	6	65	42	1,024
2017	1,058	122	65	8	61	28	1,342
<b>Leitrim</b>							
2018	218	42	21	0	16	5	302
2017	267	28	17	1	9	5	327

Local authority/ year	Private rented accom with/ without RS	Living with parents	Living with relatives/ friends	Emergency accom/none	Owner occupier	Other	TOTAL
<b>Limerick City &amp; County</b>							
2018	1,162	594	253	164	65	279	2,517
2017	1,556	614	269	118	40	273	2,870
<b>Longford</b>							
2018	342	90	55	7	22	26	542
2017	467	88	49	5	20	26	655
<b>Louth</b>							
2018	778	349	140	123	11	140	1,541
2017	1,369	396	164	109	11	200	2,249
<b>Mayo</b>							
2018	803	173	66	13	28	92	1,175
2017	929	153	60	6	12	62	1,222
<b>Meath</b>							
2018	1,098	462	175	52	77	102	1,966
2017	1,657	430	151	32	87	96	2,453
<b>Monaghan</b>							
2018	301	110	48	0	12	34	505
2017	301	96	45	1	11	22	476
<b>Offaly</b>							
2018	314	169	59	23	38	54	657
2017	600	159	65	18	24	51	917
<b>Roscommon</b>							
2018	263	40	16	2	20	28	369
2017	428	43	24	3	11	29	538
<b>Sligo</b>							
2018	173	77	46	35	22	89	442
2017	289	87	49	27	15	144	611
<b>South Dublin</b>							
2018	2,230	1,290	491	549	6	280	4,846
2017	3,200	1,450	516	406	10	287	5,869
<b>Tipperary</b>							
2018	556	312	132	41	82	78	1,201
2017	695	275	119	43	66	79	1,277
<b>Waterford City &amp; County</b>							
2018	520	251	116	93	15	122	1,117
2017	770	287	123	77	34	153	1,444
<b>Westmeath</b>							
2018	1,179	190	82	36	40	58	1,585
2017	1,319	175	74	24	41	46	1,679
<b>Wexford</b>							
2018	1,604	273	112	33	43	112	2,177
2017	1,934	297	134	45	48	119	2,577
<b>Wicklow</b>							
2018	1,572	482	187	41	64	131	2,477
2017	1,779	444	174	30	40	134	2,601
<b>TOTAL 2018</b>	<b>42,467</b>	<b>13,694</b>	<b>5,476</b>	<b>4,775</b>	<b>1,216</b>	<b>4,230</b>	<b>71,858</b>
<b>TOTAL 2017</b>	<b>55,426</b>	<b>14,917</b>	<b>5,547</b>	<b>4,378</b>	<b>1,119</b>	<b>4,412</b>	<b>85,799</b>

**Table A1.8: Length of Time on Record of Qualified Households (Waiting List) by Local Authority**

Local authority/ year	Less than 6 months	6 - 12 months	1 - 2 years	2 - 3 years	3 - 4 years	4 - 5 years	5 - 7 years	More than 7 years	TOTAL
<b>Carlow</b>									
2018	95	66	88	54	32	47	68	49	499
2017	86	92	104	82	83	77	61	66	651
<b>Cavan</b>									
2018	77	145	145	116	86	73	78	17	737
2017	63	114	141	131	108	100	28	20	705
<b>Clare</b>									
2018	121	150	214	84	83	82	100	170	1,004
2017	215	209	339	223	228	177	244	317	1,952
<b>Cork City</b>									
2018	351	295	367	286	260	278	462	819	3,118
2017	360	301	544	461	497	406	734	1,070	4,373
<b>Cork County</b>									
2018	399	419	540	380	265	349	550	607	3,509
2017	575	443	548	473	613	653	526	760	4,591
<b>Donegal</b>									
2018	151	117	167	125	77	64	52	58	811
2017	150	140	181	124	105	64	86	53	903
<b>Dublin City</b>									
2018	1,303	1,202	1,683	1,397	1,404	1,539	2,359	5,627	16,514
2017	1,493	1,121	1,730	1,985	2,149	1,767	2,978	5,997	19,220
<b>Dún Laoghaire-Rathdown</b>									
2018	174	184	330	265	298	286	433	873	2,843
2017	182	202	330	369	354	355	572	943	3,307
<b>Fingal</b>									
2018	452	406	639	598	562	541	1,192	2,603	6,993
2017	373	433	714	670	645	612	1,434	2,390	7,271
<b>Galway City</b>									
2018	107	123	141	126	171	179	324	557	1,728
2017	123	131	187	251	263	230	451	583	2,219
<b>Galway County</b>									
2018	139	143	181	144	210	252	409	341	1,819
2017	202	101	193	257	299	303	302	293	1,950
<b>Kerry</b>									
2018	216	143	304	364	242	248	430	963	2,910
2017	205	237	462	322	316	261	530	884	3,217
<b>Kildare</b>									
2018	354	197	369	355	324	385	558	1,420	3,962
2017	312	216	437	418	493	508	850	1,869	5,103
<b>Kilkenny</b>									
2018	94	72	86	180	101	98	150	187	968
2017	81	76	234	150	144	129	227	189	1,230
<b>Laois</b>									
2018	114	109	147	107	139	159	172	77	1,024
2017	181	139	158	200	244	221	98	101	1,342
<b>Leitrim</b>									
2018	46	34	53	52	45	26	27	19	302
2017	40	52	80	59	38	24	22	12	327

Local authority/ year	Less than 6 months	6 - 12 months	1 - 2 years	2 - 3 years	3 - 4 years	4 - 5 years	5 - 7 years	More than 7 years	TOTAL
<b>Limerick</b>									
2018	295	266	404	241	265	268	408	370	2,517
2017	312	273	310	362	379	373	460	401	2,870
<b>Longford</b>									
2018	90	77	109	74	69	30	74	19	542
2017	87	106	112	130	63	90	47	20	655
<b>Louth</b>									
2018	145	211	185	95	99	147	245	414	1,541
2017	136	130	145	198	268	251	477	644	2,249
<b>Mayo</b>									
2018	120	124	191	120	133	163	121	203	1,175
2017	164	103	144	170	202	111	120	208	1,222
<b>Meath</b>									
2018	186	158	234	138	218	256	475	301	1,966
2017	216	139	190	310	349	337	593	319	2,453
<b>Monaghan</b>									
2018	92	69	82	74	23	41	68	56	505
2017	70	47	87	37	63	46	79	47	476
<b>Offaly</b>									
2018	104	133	94	58	49	56	77	86	657
2017	99	59	107	95	151	129	147	130	917
<b>Roscommon</b>									
2018	77	50	79	64	41	38	12	8	369
2017	73	88	126	99	102	29	11	10	538
<b>Sligo</b>									
2018	98	46	67	44	64	31	15	77	442
2017	109	61	99	102	64	22	26	128	611
<b>South Dublin</b>									
2018	420	392	530	384	352	468	663	1,637	4,846
2017	554	363	507	496	650	471	1,048	1,780	5,869
<b>Tipperary</b>									
2018	245	216	230	134	85	95	114	82	1,201
2017	222	185	214	154	167	102	128	105	1,277
<b>Waterford City &amp; County</b>									
2018	124	101	226	117	123	102	167	157	1,117
2017	165	158	198	193	193	172	203	162	1,444
<b>Westmeath</b>									
2018	166	133	260	201	165	161	246	253	1,585
2017	189	203	293	207	197	184	190	216	1,679
<b>Wexford</b>									
2018	0	11	443	414	403	285	333	288	2,177
2017	296	231	459	455	345	245	255	291	2,577
<b>Wicklow</b>									
2018	141	155	233	229	221	206	445	847	2,477
2017	137	157	274	264	241	300	433	795	2,601
<b>TOTAL 2018</b>	<b>6,496</b>	<b>5,947</b>	<b>8,821</b>	<b>7,020</b>	<b>6,609</b>	<b>6,953</b>	<b>10,827</b>	<b>19,185</b>	<b>71,858</b>
<b>TOTAL 2017</b>	<b>7,470</b>	<b>6,310</b>	<b>9,647</b>	<b>9,447</b>	<b>10,013</b>	<b>8,749</b>	<b>13,360</b>	<b>20,803</b>	<b>85,799</b>

**Table A1.9: Nationality (Main Applicant) of Those Qualified for Social Housing Support by Local Authority**

Local authority/year	Irish Citizen	EEA Citizen	Non-EEA Citizen	TOTAL
<b>Carlow</b>				
2018	409	71	19	499
2017	504	112	35	651
<b>Cavan</b>				
2018	505	182	50	737
2017	492	171	42	705
<b>Clare</b>				
2018	827	139	38	1,004
2017	1,466	371	115	1,952
<b>Cork City</b>				
2018	2,281	608	229	3,118
2017	3,165	876	332	4,373
<b>Cork County</b>				
2018	2,431	920	158	3,509
2017	3,160	1,217	214	4,591
<b>Donegal</b>				
2018	684	112	15	811
2017	759	127	17	903
<b>Dublin City</b>				
2018	12,050	2,948	1,516	16,514
2017	14,038	3,362	1,820	19,220
<b>Dún Laoghaire-Rathdown</b>				
2018	2,289	319	235	2,843
2017	2,620	378	309	3,307
<b>Fingal</b>				
2018	5,317	1,011	665	6,993
2017	4,654	1,542	1,075	7,271
<b>Galway City</b>				
2018	1,167	421	140	1,728
2017	1,406	602	211	2,219
<b>Galway County</b>				
2018	1,398	372	49	1,819
2017	1,469	426	55	1,950
<b>Kerry</b>				
2018	2,038	727	145	2,910
2017	2,158	851	208	3,217
<b>Kildare</b>				
2018	2,806	904	252	3,962
2017	3,570	1,155	378	5,103
<b>Kilkenny</b>				
2018	780	157	31	968
2017	975	212	43	1,230
<b>Laois</b>				
2018	708	241	75	1,024
2017	853	372	117	1,342
<b>Leitrim</b>				
2018	197	84	21	302
2017	221	90	16	327

Local authority/year	Irish Citizen	EEA Citizen	Non-EEA Citizen	TOTAL
<b>Limerick City &amp; County</b>				
2018	2,086	268	163	2,517
2017	2,312	357	201	2,870
<b>Longford</b>				
2018	349	149	44	542
2017	416	183	56	655
<b>Louth</b>				
2018	1,128	309	104	1,541
2017	1,602	490	157	2,249
<b>Mayo</b>				
2018	893	235	47	1,175
2017	928	248	46	1,222
<b>Meath</b>				
2018	1,449	436	81	1,966
2017	1,737	589	127	2,453
<b>Monaghan</b>				
2018	340	152	13	505
2017	330	134	12	476
<b>Offaly</b>				
2018	528	114	15	657
2017	710	178	29	917
<b>Roscommon</b>				
2018	266	87	16	369
2017	363	148	27	538
<b>Sligo</b>				
2018	376	45	21	442
2017	511	73	27	611
<b>South Dublin</b>				
2018	3,635	826	385	4,846
2017	4,229	1,140	500	5,869
<b>Tipperary</b>				
2018	998	184	19	1,201
2017	1,077	179	21	1,277
<b>Waterford City &amp; County</b>				
2018	887	191	39	1,117
2017	1,098	284	62	1,444
<b>Westmeath</b>				
2018	1,050	394	141	1,585
2017	1,091	430	158	1,679
<b>Wexford</b>				
2018	1,727	402	48	2,177
2017	2,052	469	56	2,577
<b>Wicklow</b>				
2018	2,012	424	41	2,477
2017	2,096	462	43	2,601
<b>TOTAL 2018</b>	<b>53,611</b>	<b>13,432</b>	<b>4,815</b>	<b>71,858</b>
<b>TOTAL 2017</b>	<b>62,062</b>	<b>17,228</b>	<b>6,509</b>	<b>85,799</b>







Notes





[www.rebuildingireland.ie](http://www.rebuildingireland.ie)  
[www.housingagency.ie](http://www.housingagency.ie)